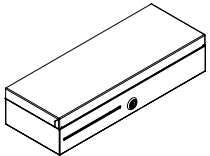




E3600 Flip-Top Product Specifications

460 Model



Dimensions:
(width x depth x height)

18.1 x 6.8 x 4.0 inches
460 x 172 x 102 mm

Shipping weight:

15 lbs
6.8 kg

Features

- Tested to last beyond 2 million transactions
- Flip-lid opens fully to 80° providing easy access to the contents of the till for the life of the drawer
- Robust latch withstands slamming and closes even with a light touch
- Single media slot offers additional under till storage
- Till with locking cover provided with every unit, locking cover fully encloses media
- Available in Black and Beige, with either a painted or stainless steel lid
- Four function lock
- Closed and latched drawer status switch
- Random keying from 4 lock codes is standard, other lock and keying options are available

Advanced Security Options

Advanced Drawer Lock Options

The Flip-Top cash drawer can feature the added security of being randomly keyed from 100 mutually exclusive lock codes.*

Advanced Till Cover Lock Options

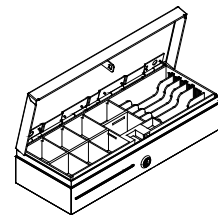
The locking till cover can feature the added security of being randomly keyed from 160 mutually exclusive lock codes.*

* Other lock/keying options are available, contact your APG representative for more information.

Available Hardwired Interfaces

- 437A Epson Hardwired Interface
- 422 TPG Hardwired Interface
- 468 IBM 46XX Series Hardwired Interface
- XXX Other numbers indicate the DirectPRO™ hardwired or a custom interface

Refer to APG's Connectivity Guide at www.cashdrawer.com for interface cable detail.



Operating Environment

Storage Temperature -30°C to +50°C (-22°F to +122°F)

Operating Temperature 0°C to +40°C (+32°F to +104°F)

Relative Humidity
(non-condensing)

10% to 95%

Accessories

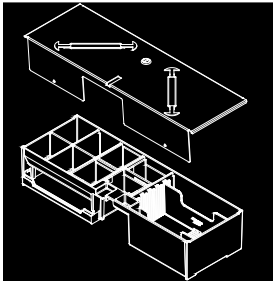
- Till comes standard with cash drawer, additional tills are available
- Locking till cover is included with every till
- Weighable coin cups are available in the standard 33.5 gram weight
- Flip-Top till accommodates a variety of currencies, contact your APG Representative for more information
- Measurements are shown as width x depth x height

Standard Till And Cover Kit

VPK-15FTC-01-BX

- 8 coin, 4-6 bills locations with removable divider to adjust bill spaces
- Features integrated media storage
- Comes with till cover

17.5 x 6 x 3.5 inches
446 x 152 x 89 mm

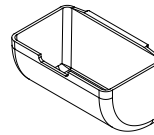


Till and cover shown

Weighable Coin Cups

PK-15J-06-BX

- Standard tare weight for automated cash counting
- Precision molded at 33.5 grams each cup
- Exact fit to each till
- Easy removal



Warranty

Three (3) year limited warranty. A full warranty statement is available online at www.cashdrawer.com/warranty.

Contact Us



APG Cash Drawer, LLC
5250 Industrial Blvd NE
Minneapolis, MN 55421



+1 (763) 571-5000



sales@us.cashdrawer.com