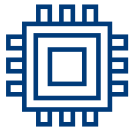


**POC-4 Series**  
Point-of-Care  
Terminals



Advantech's medical-grade, high-performance solutions are built for clinical, surgical, and specialty healthcare applications aimed to improve patient care and to deliver better patient outcomes.



Intel® Core™  
i5-8365UE processor



IP54-rated  
protection



Versatile I/O with  
RS-232 COM



Optional Wi-Fi, Bluetooth,  
RFID reader, smart card  
reader, and 5MP camera

Product Name	Part Number	Product Description
POC-4 series	POC42412B2401-CT	23.8", Core i5, 8G RAM, 256G NVME, WIFI, IPX1, PCAP Touch, Windows 10, US power cord, MDR

**Rapid Time-To-Market**

- Easy to integrate peripherals and configure unique solutions for rapid time-to-market

**Reliable yet Flexible**

- Medical-grade design suitable for controlled aseptic/sterile environments
- Supports 4 modalities for flexible configuration according to usage needs

**Slim and Compact**

- Easy to integrate peripherals and configure unique solutions for rapid time-to-market

**Built for  
Clinical Applications**

- Can be used in diverse healthcare applications: Emergency Departments, Pharmacies, Nursing Stations, Patient Care rooms and more

Clinical Rooms



Nursing Stations



Medication Management



Lab & Manufacturing

