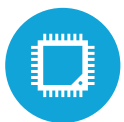




### HIGHLIGHTS



Intel® Atom® Cherry Trail Processor



7" or 10" Projected Capacitive Touch Screen



Ruggedized design confirming to IP54 rating and 4 ft. drop specification



Standard features including WiFi, Bluetooth, and MSR (encrypted optional)



Level 3 Certified EMV

# SPECIFICATIONS

## MOTHERBOARD

Processor: Intel® Atom® X7-8750 1.6 Ghz with the burst freq. @ 2.56Ghz  
 Chipset: SOC  
 System Memory: 4GB DDR3L (up to 8GB DDR3L available)  
 Cache: 2MB

## DISPLAY

LCD Size: 7" or 10.1"  
 LCD Resolution: 1280 x 800 (Quest 7"), 1920 x 1200 (Quest 10")  
 Nits: 300 (7") , 370 (10")

## STORAGE

Storage: 64GB eMMC

## POWER

Battery: 8000mAh, 3.7V

## OPTIONAL PERIPHERALS

Smart Chip Reader: EMV L3 Certified  
 Barcode Scanner: Integrated 2D Barcode Scanner with USB interface  
 Fingerprint Reader: Capacitive fingerprint reader  
 Cellular Data: 3G SIM Card Slot  
 Battery Charger: 5-bay battery charger  
 Camera: 8MP with autofocus  
 NFC: Near Field Communication  
 Age/ID Verification: Easy DL @2.0 Scanning  
 Augusta Reader: Level 3 Certified (10" Only)

## DOCKING OPTIONS:

Charging Dock: Standard Dock, comes with USB OTG Cable  
 Premium Dock: Comes with 4 x USB, 1 x Serial, 1 x LAN with optional VGA port

## CONNECTIVITY:

Wireless: 802.11 b/g/n/ac with 2.4Ghz/5Ghz Support  
 Bluetooth: 4.0+LE (Class2)  
 3G: Optional

## ENVIRONMENT:

Operating Temperature: 0°C ~ 40°C (32°F ~ 104°F)  
 Storage Temperature: -10°C ~ 45°C (-45°F ~ 114°F)  
 Operating Humidity: 20% ~ 80% RH non-condensing  
 Storage Humidity: 20% ~ 80% RH non-condensing

## CERTIFICATE:

EMC & Safety: FCC Class B, CE, UL  
 Dust & Water Proof: IP54 Front Bezel

## DIMENSIONS:

Dimensions: 8" x 5" x 1.3" (Quest 7"), 10.6" x 6.9" x 1.4" (Quest 10")  
 Weight: 1.47 Lbs. (Quest 7"), 2.08 Lbs. (Quest 10")

## OPERATING SYSTEM:

Windows 10 IOT 64bit, Windows 10 Pro 64bit



KEY	
1	7" and 10" Projected Capacitive Touch Screen
2	Standard Dock and Optional Premium Dock
3	Standard MSR (Encryption Optional)
4	Standard Hand Strap
5	Optional EMV Slot
6	Optional Fingerprint Reader
7	Optional Barcode Reader
8	Optional 3G Module