

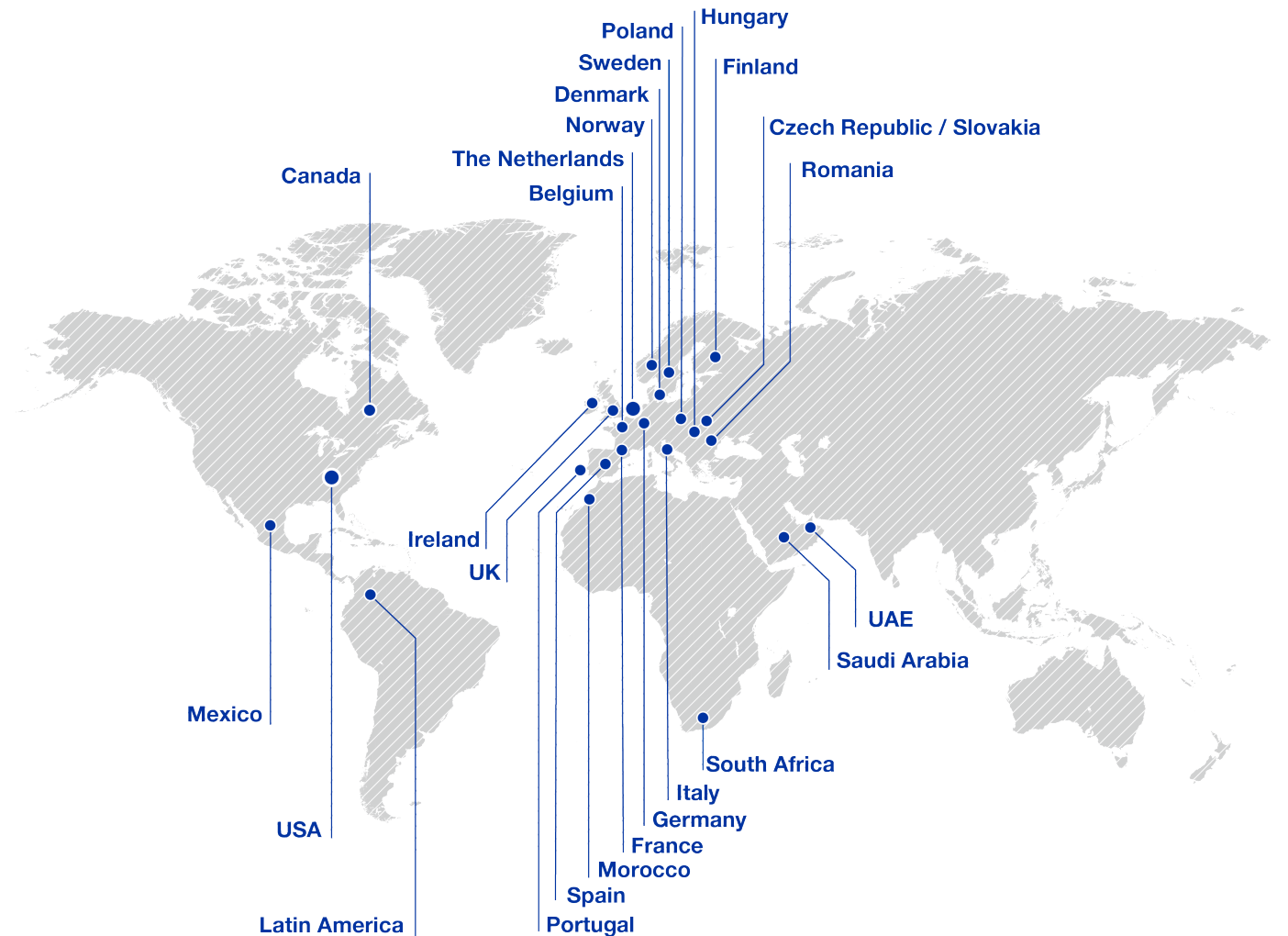


RETAIL & HOSPITALITY SOLUTIONS

POWERED BY BLUESTAR



LOCATIONS / EMEA



Belgium
+32 23 420408
info.be@eu.bluestarinc.com

Czech Republic & Slovakia
+420 46 7027830
info.czs@eu.bluestarinc.com

Denmark
+45 8988 3663
info.dk@eu.bluestarinc.com

Finland
+358 94 2732280
info.fi@eu.bluestarinc.com

France
+33 4 75 71 08 50
info.fr@eu.bluestarinc.com

Germany (DACH)
+49 69 31090150
info.de@eu.bluestarinc.com

Hungary & EE
+36 1 808 8275
info.hu@eu.bluestarinc.com

Ireland
+353 1 968 2580
info.ie@eu.bluestarinc.com

Italy
+39 051 9525685
info.it@eu.bluestarinc.com

Morocco
+212 675 885 319
info.mo@eu.bluestarinc.com

Norway
+47 22838400
info.no@eu.bluestarinc.com

Poland
+48 22 1531600
info.pl@eu.bluestarinc.com

Portugal
+351 707 502 591
info.pt@eu.bluestarinc.com

Romania
+40 740 110 111
info.ro@eu.bluestarinc.com

Saudi Arabia
+966 545336959
info.ksa@eu.bluestarinc.com

South Africa
+27 837 30 65 34
info.sa@eu.bluestarinc.com

Spain
+34 902 11 91 03
info.es@eu.bluestarinc.com

Sweden
+46 40 6688508
info.se@eu.bluestarinc.com

The Netherlands
+31 880 233 633
info.nl@eu.bluestarinc.com

UAE
+971 504584404
info.me@eu.bluestarinc.com

United Kingdom
+44 1785 218500
info.uk@eu.bluestarinc.com



BLUESTAR. BUSINESS MADE SIMPLE.

BlueStar is a leading global distributor specializing in solutions-based technology, including Digital Identification, Mobility, Point-of-Sale, RFID, Digital Signage, Robots, and Security. We exclusively support value-added resellers, integrators, and ISVs with complete solutions, business development, and marketing support.

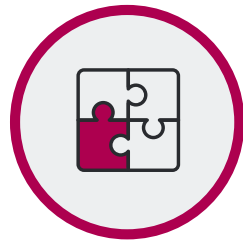
BlueStar provides end-to-end assistance for any project no matter the size or the market. We are your one-stop shop for all your technology needs, with a focus on flexibility and efficiency. Our dedicated sales and technical teams work alongside your operations to ensure seamless implementation.

Our commitment to your success, backed by our available robust financial resources, helps you become more agile, capable, and profitable.

OUR TEAMS ARE AN EXTENSION OF YOUR COMPANY.

WE ARE YOUR DEDICATED RESOURCE,
COMMITTED TO HELPING YOU GROW YOUR
RETAIL & HOSPITALITY-FOCUSED BUSINESS.

THE BLUESTAR DIFFERENCE



BLUESTAR SERVICES

- Configuration
- Staging
- Custom packaging
- Kitting and Bundling



LOGISTICS EXCELLENCE

- Centralized warehouse
- Same-day shipment
- EMEA drop-shipment
- Largest solutions-based stock in Europe, Middle East & Africa



LOCAL SUPPORT

- 27+ locations across EMEA
- 18+ local language spoken in Sales, Support and Business
- Specialized local BDM teams in a brand or vertical market



BLUESTORE - ONLINE PLATFORM

- One-stop-shop, more than 90 vendors
- Order, Invoice and RMA Management
- Quick Ordering function
- Price Exceptions Visibility



CONTRACT & RENEWALS

- Trained team for efficient service orders
- Secure recurring revenue with renewals team
- Expertise in managing service opportunities
- Ensure order cleanliness and correctness



GLOBALCARE

- Upscale Globally
- Global network of experts
- Global warehouse and shipment



ANDROID COMPETENCE CENTRE

- Zero Touch deployment
- Google Play app management
- Google Play Protect
- Android Enterprise
- Recommended solutions



DIGITALLY READY

- ERP Import - FTP server
- Stock updates every 30 min.
- XML Orders and Invoices
- EDI connection available
- Manage with API's



[Visit ISV Portal ►](#)

ACCELERATE YOUR BUSINESS WITH BLUESTAR.

Discover TEConnect, an exclusive BlueStar program designed to help Independent Software Vendors (ISVs) grow their business. If you develop software solutions within the Retail & Hospitality ecosystem, TEConnect links you with top manufacturers, system integrators, and resellers, providing unique networking opportunities to foster meaningful partnerships.

SOLUTIONS FOR YOU

1. You are a Payment Provider or an POS ISV looking to supply POS hardware to create a one-stop-shop.



BlueStar becomes a fulfillment and 3PL (third party logistics) for you as we would stock your payment device and accessories. Together we create a custom made hardware bundle in cooperation with our wide array of POS manufactures.

BlueStar's value-added services are available for you to brand, customize or stage your hardware package before transport. BlueStar partners up with leading logistical companies to provide the best and fastest shipping possible at competitive rates across EMEA.

A merchant's ability to take payments is critical, therefore we created a flexible overnight RMA service so your merchant will always be able to continue receiving payments.

With this set-up you have created a one-stop-shop for your customers/merchants without having the trouble of dealing with warehousing and logistical services. BlueStar is a single point of contact to take care of all your fulfillment needs.

KEY PRODUCTS SUPPLIED:

- Payment Device & PED Stand
- iPad & Tablet / Tablet Stand
- Receipt Printer & Paper Rolls
- Cash Drawer
- Barcode scanner
- Label Printer & Labels
- Touch Screen
- KDS (Kitchen Display System)

2. You are a traditional Windows ePOS ISV looking to supply hardware to your resellers and end customers.

BlueStar works with you to find the best suitable terminal for your software and budget along with any peripherals or accessories. You then create a Windows Image that includes your POS Software, drivers and anything else that is needed.

BlueStar's VAS (Value Added Services) team adds the Windows Image to the terminal before shipping the complete solution which is delivered directly to the end user.

We also Label boxes, which one to be opened 1st/2nd/3rd and add in simple diagrams to each box. If needed, we help you create the diagrams to make it simple for an end user to follow and complete the set up and know which cable goes where and any top tips / procedures / needs.

KEY PRODUCTS SUPPLIED:

- Windows Touch Screen terminal
- MSR and Customer facing screen for the terminal
- Receipt Printer & Paper Rolls
- Barcode Scanner
- PED Stand
- Cash Drawer
- KDS (Kitchen Display System)
- Ergonomic Mounting Solution

RETAIL SOLUTIONS

There is a great need to assist the Retail industry with specialty electronics such as POS systems, barcode scanners, and so much more to help efficiently operate business. It can be challenging to connect with customers, but with the help of contactless and mobile technology solutions, retailers are able to strengthen and kindle their relationships.



59%

have better experiences when associates use the latest technology



57%

prefer sales associates find the latest information for them



52%

prefer self-checkout



POS SET UP

- Touch screen terminal & stand
- Customer facing display (Optional)
- Receipt printer
- Paper rolls
- Barcode scanner
- Payment device
- Payment device stand

A comprehensive point of sale solution – just add software to start serving customers.

INTERACTIVE DIGITAL SIGNAGE

- Large format touch screen display
- Large format touch screen display mounting
- Computer module
- Barcode scanner (Optional)

Include an Interactive Digital Signage Solution to improve customer engagement and increase repeat customers.

FRESH FOOD LABELLING

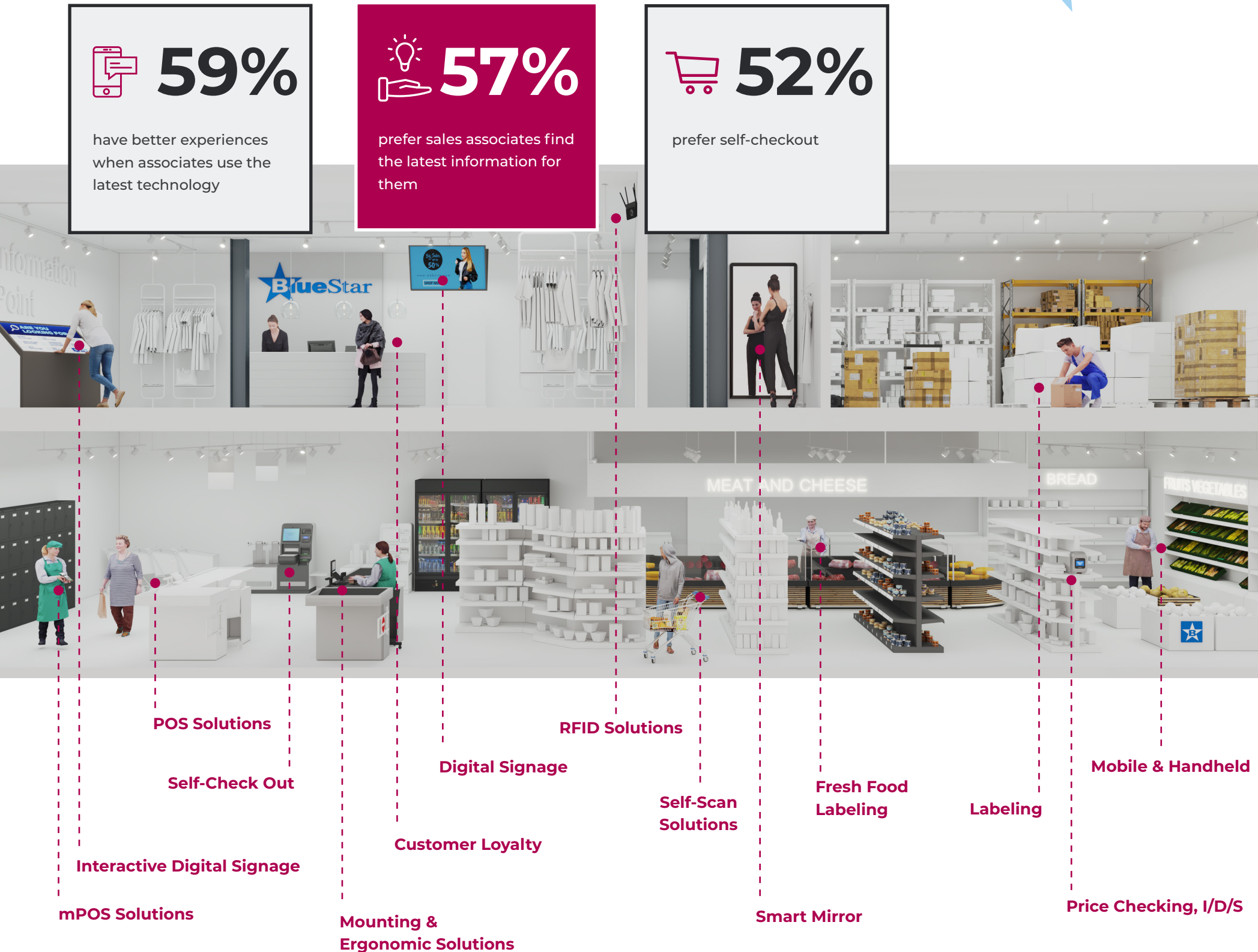
- Label printer
- Label rolls
- Ink cartridges/ribbons
- Labelling software

Efficient fresh food packaging is just a click away with this complete solution from one place.

SELF CHECK-OUT

- Touch screen terminal
- Kiosk printer
- Paper rolls
- Scanner scale
- Kiosk enclosure
- Bagging station
- Payment device

Self-checkout reduces wait times, empowers customers to control their transactions, enhances efficiency, and decreases labor costs for retailers.



HOSPITALITY SOLUTIONS

From the omni-channel to curbside pickup, hospitality environments have opened up a door to a brand-new room of opportunity for hoteliers and other hospitality-providers. It's important to ensure that all technology solution offerings are seamless, appropriate, effective, to intuitive, keeping the best interests of the customer in mind.

82%

believe that contactless payments are a much cleaner way to pay

81%

of travelers want greater digital customer experience

37%

of guests would be more likely to choose a hotel lobby with self check-in kiosks over ones without.



MPOS PAYMENT

- Tablet
- Tablet mount
- Receipt printer
- Paper rolls
- Cash drawer
- Payment device
- Barcode scanner (Optional)

mPOS technology offers flexibility and mobility, enabling efficient order taking and payments anywhere within hospitality settings, enhancing customer service speed.

SELF ORDERING

- Integrated kiosk
- Paper rolls
- Payment device
- Payment device mount

Integrated kiosks offer a complete solution for easy ordering, enhancing the customer experience and boosting upselling opportunities..

DIGITAL MENU BOARD

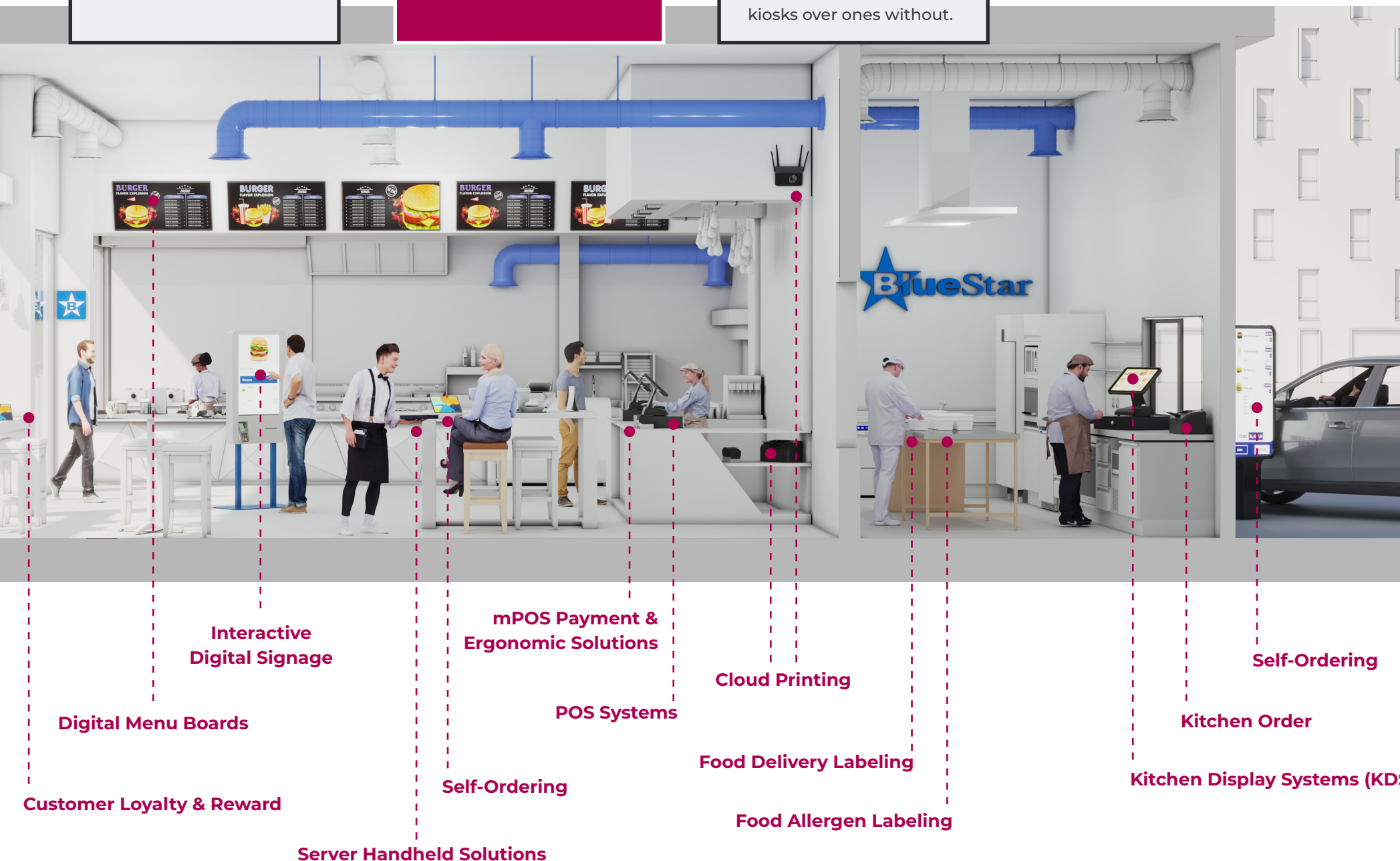
- Large format non-touch display
- Large format non-touch display mounting
- Computer module

Digital Menu Boards keep your information up-to-date for customers and enhance advertising opportunities by adapting to constant stock fluctuations.

KITCHEN ORDERING

- Kitchen display screen
- Kitchen display screen mount
- Kitchen receipt printer

Durable solutions to ensure kitchen operations aren't disrupted by day-to-day use and the customer always receives quick service.



TOUCH SCREEN & TOUCH SCREEN TERMINALS

CUSTOM®



The touch screen terminals realized by Custom guarantee the highest level of innovation, reliability and performance, having been developed to answer to the most demanding needs of the Retail market. These solutions use the most advanced software applications and guarantee to the point of sale the best combination of technology and design.

KEY POINTS:

- Available versions for different operating systems
- Display and customer monitor available in different sizes
- All-in-one solutions available with interated printer & screen

[Shop Now](#)

elo



Elo product portfolio includes a broad selection of interactive touchscreen displays from 10-65 inches, all-in-one touchscreen computers and POS solutions, open-frame kiosk touchscreens for indoor and outdoor, and desktop touchscreen monitors.

KEY POINTS:

- Choice of size and form factor
- Android or Windows platform
- Edge Connect accessories expand use
- ELO Pay options

[Shop Now](#)

MicroTouch



Discover the cutting-edge MicroTouch Mach AiO series available with Android and Windows OS. Mach products offer industry leading All-in-One performance, advanced anti-glare and optical bonding, flexible integration with optional peripherals. The Mach family provides the modern stylish look you want with the superior performance you need.

KEY POINTS:

- Available in 10.1", 15.6" and 21.5"
- Powered by the latest operating systems and processors with 4G models also available
- Industry leading visual and computing performance

[Shop Now](#)

TOUCH SCREEN & TOUCH SCREEN TERMINALS

LANDI



Landi deliver an exceptional customer experience with the latest ordering and payment technology. They have multiple configuration options to fit every solution from a range of operating systems and accessories to optional NFC.

KEY POINTS:

- Variety of configurations with printers, customer facing display & NFC optional
- LANDI Connect platform available to unlock the full potential of digital commerce
- High quality design

[Shop Now](#)

NCR VOYIX



NCR has been at the forefront of retail and hospitality technology for over two decades with the best in class POS terminals and accessories. They have many options for all in one terminals with a range of configurations for point of sale as well as printers, scanners, kiosks and customer displays.

KEY POINTS:

- Touchscreen computers with a range of operating systems
- Complete solutions for POS
- Made with the best materials for reliability in the most high traffic environments

[Shop Now](#)

oona



The oona 22" screen has an ultra-high performance NFC antenna and enterprise durability to be effective in many environments. It can seamlessly integrate into any point of sale solution with contactless payments, barcode reading, and alternative payment methods with its integrated camera.

KEY POINTS:

- High performance built in NFC antenna
- IP65 rating with high resistance to a variety of harsh chemicals
- Variety of accessories available

[Shop Now](#)

TOUCH SCREEN & TOUCH SCREEN TERMINALS

SUNMI



Sunmi is leading the move to Android for business. Performance and customer experience are at the heart of Sunmi's touchscreen terminal products. Ensuring high level of quality and design, Sunmi provides a full range of single and dual screen digital POS and touch computers.

KEY POINTS:

- High performance Qualcomm platform
- Leveraging the full Android ecosystem
- Ergonomics with industrial grade touchscreens

[Shop Now](#)

TABLETS



Honeywell

Honeywell's rugged, enterprise tablet computers equip retail, DSD, field service and T&L operations with flexible solutions that fit a wide range of workflows. Excellent connectivity and advanced barcode scanning makes some ideal for work requiring a truly mobile office such as field sales, direct-store delivery and field service, with the enterprise reliability, security and OS upgradeability.

KEY POINTS:

- Full-service offering, and a extensive line of accessories
- Built on Android or Windows
- Rugged drop specification and IP65 rating - built to last
- Wide assortment of mounting, charging and accessory portfolio

[Shop Now](#)

Lenovo



Lenovo is revolutionizing the tablet experience for businesses. With a focus on performance and user satisfaction, Lenovo offers a comprehensive range of tablets designed to deliver superior quality and functionality. From 8" tablets to 11" options, Lenovo tablets are crafted with precision and innovation to meet the diverse needs of modern businesses.

KEY POINTS:

- Android Enterprise Recommended with 3 years of google security & OS updates
- Very customizable with cloud based service available to remotely manage tablets
- Very low failure rate of 0.16%

[Shop Now](#)

oona



The oona 8" and 10" tablets feature ultra-high performance NFC antennas and enterprise-grade durability, making them versatile for various environments. Seamlessly integrate them into any point-of-sale setup, offering contactless payments, barcode reading, and alternative payment methods with the integrated camera.

KEY POINTS:

- High performance built in NFC antenna
- IP65 rating with high resistance to a variety of harsh chemicals
- Android & Windows available

[Shop Now](#)

TABLETS

SUNMI



Sunmi M2 Max is a flexible and rugged tablet designed for professional use in retail, food service, hospitality, warehousing and manufacturing industries. M2 Max provides superior efficiency and durability in any environment with a high-powered platform.

KEY POINTS:

- 10,1" on Android 9.0
- Operate with glove/wet touch sensing
- Protect from drop and water/dust ingress

[Shop Now](#)

unitech



Unitech is a global provider of AIDC (automatic identification and data capture) and RFID technologies with over 40 years of experience. Unitech manufactures a wide range of Enterprise solutions such as mobile computers, rugged handheld PDAs, industrial tablets, RFID readers/writers, barcode scanners (1D/2D, DPM and ESD safe), embedded readers and software solutions.

KEY POINTS:

- Windows 10.1" tablet
- Android 8" tablet
- Rugged and designed for multiple purposes
- Large range of accessories such as: desktop cradle, snap-on readers, mobile printers, and more.

[Shop Now](#)

ZEBRA



When you're committed to setting a higher standard, you need a tablet that's not only rugged, but also designed to work exactly the way you need it to. Reimagine your workday with a purpose-built tablet that's perfectly matched and personally customized to work your way. Bring your highest aspirations within reach with Zebra.

KEY POINTS:

- 8" and 10" Android Models
- Rugged and designed for Retail and Hospitality
- Wide Range of Accessories from Zebra
- WiFi 6, 5G, and NFC enabled options

[Shop Now](#)

RECEIPT PRINTERS

brother



Brothers labelling solution for retail sector allows you to work more efficiently by performing tasks with greater accuracy and clarity. As seen in Brothers success cases, food labelling for allergens, date labelling and price markdown labelling must be relied upon for the safety of customers. Additionally, Brothers printers are easy to use, so large teams can safely print without much training.

KEY POINTS:

- Clear food allergy labels
- Direct & thermal transfer
- Free label editing software
- 2" to 4"

[Shop Now](#)

CITIZEN



Citizen Systems Europe produces a comprehensive range of printing solutions and designs its machines to meet the specific needs of each application. The range includes tough, contamination-resistant label printers for industrial environments and compact desktop and portable POS units for retail.

KEY POINTS:

- Receipt / Ticket / Label Printers
- Direct Thermal & Thermal Transfer
- Multi Interface
- Desk Top / Kiosk

[Shop Now](#)

CUSTOM®



The POS receipt printers manufactured by Custom are the perfect answer for those looking for high performances with a design studied to save space. The quality of the POS printers guarantees an unavoidable duo: excellent print quality, even in graphics, combined with speed and reliability.

KEY POINTS:

- Receipt / invoice / order / ticket / label printers
- Complete software suite available
- Rugged and compact design

[Shop Now](#)

RECEIPT PRINTERS

EPSON



A global manufacturer of printers, best-selling POS receipt printers lead the industry in easy-to-use features, fast printing speeds and superior reliability. A wide range ensures printers for all areas with Japanese reliability.

KEY POINTS:

- Receipt / Ticket / Inkjet / Mobile Printers / Customer Displays
- Direct Thermal / Dot Matrix / Inkjet Technology
- Mobile / Desktop Printers

[Shop Now](#)

Honeywell



Honeywell mobile printers offer the most rugged and reliable performance for route accounting, direct store delivery, citation printing, car rental return receipts and field service workers. These tough printers withstands drops and exposure to dust and water, and is designed for all-day printing with a full-shift battery life.

KEY POINTS:

- Mobile Printers built for rugged environments
- Receipt / Label / Ticket
- Exceptional media and battery capacity, designed for all-day printing
- A complete accessory portfolio

[Shop Now](#)

NCR VOYIX



The NCR receipt printer delivers exceptional performance and versatility to meet the demands of retail and hospitality environments. With high-speed thermal printing, crisp text, and sharp graphics, it ensures efficient transactions and customer satisfaction. Designed for durability, it can print up to 60 million lines, with an auto cutter supporting two million knife cuts.

KEY POINTS:

- High-speed thermal printing for efficient transactions and customer satisfaction
- Can print up to 60 million lines and support two million knife cuts.
- Energy-efficient printing with low power consumption mode

[Shop Now](#)

RECEIPT PRINTERS

SATO



SATO, a leading provider of labeling solutions for retail, offers a range from hand labellers to advanced mobile units, streamlining pricing processes. They are unique in providing hardware that can encode NFC labels and offer combined solutions with RFID UHF, ideal for business-to-business supply chains.

KEY POINTS:

- Receipt / Ticket / Label Printers
- Efficient label production, minimising waste,
- Powerful on-board intelligence enables customisation of the printer

[Shop Now](#)

star



A global manufacturer of POS hardware, Star Micronics has been supporting retailers for over 30 years to deliver efficient, reliable store solutions. At the forefront of product innovation, Star offers the largest range of POS, mPOS and Tablet POS printers currently available with a range of connectivity choices to suit any retail environment.

KEY POINTS:

- Receipt / Ticket / Label Printers
- Direct Thermal or Dot Matrix
- Single or Multi Interface
- Mobile / Desk Top / Kiosk

[Shop Now](#)

SUNMI



Sunmi receipt printers provide protection in harsh kitchen environments, with IP52 rating and an easy-to-clean ABS oleophobic coating. These printers offer automatic printing of pending orders post-network outage to reduce improve customer experience. They reduce wait times and support multi-language printing for enhanced readability and user experience in a variety of use cases.

KEY POINTS:

- High speed printing up to 250mm/s
- IP52 rating prevents printer damage caused by water dripping and dust
- Has USB, LAN, WiFi and Bluetooth as standard with addition options for 4G

[Shop Now](#)

RECEIPT PRINTERS



Whether it's tracking products, managing inventory, printing receipts, changing price tags, or affixing special labels, TSC's sleek line of retail systems is designed to provide custom solutions for our customer's needs.

KEY POINTS:

- Five Grades of Receipt Paper, Zero Hassle
- Mission-Critical Receipt Printing with the Rugged Alpha Series Performance Mobile Printers
- Receipts Where and When You Need Them

[Shop Now](#)



The Unitech mobile printers provide seamless integration with your existing Unitech mobile solutions, a perfect fit for mobile workers allowing them to extend their applications and efficiency even further.

KEY POINTS:

- Unitech 4" and 3" mobile printers / supports ESC/POS and is CPCL compatible
- Supports USB and Bluetooth®
- Supports label and thermal paper

[Shop Now](#)



Increase your employees' productivity, precision and accuracy. Equip them with wireless mobile printers that are tailored to how they work and the job they do. Printers range from those ideal for occasional use, to rugged machines, featuring a wide range of the latest connectivity options, and robust functionality, keeping you operational even in difficult situations.

KEY POINTS:

- Receipt / Ticket / Label
- Rugged and designed for Retail and Hospitality
- Choice of Accessories from Zebra
- 2" to 4"

[Shop Now](#)

BARCODE SCANNERS/ HANDHELD TERMINALS



Custom's barcode readers and data acquisition systems optimize front and back-end communication for retail and hospitality sectors. Choosing Custom means tapping into a wealth of experience of almost 30 years in many different sectors, embracing a range of vertical hardware and software solutions as part of a unique service structure.

KEY POINTS:

- Handheld barcode scanners 1D/2D, corded/cordless, multi-interface
- Desktop barcode scanner 1D/2D, multi-interface
- Mobile computers Android, PDA/PDT, 1D/2D`

[Shop Now](#)



To support you in making your customers happy, Datalogic offers a full set of retail solutions. Datalogic technology ensures the flawless moving of products from the point of arrival up to the store or to the end user. Being the first company to scan a barcode on a chewing gum in a grocery store in 1974, all their experience is shared with you in each of your retail solution projects.

KEY POINTS:

- Wireless and contactless charging technology
- Handheld barcode scanners 1D/2D, corded /cordless, multi-interface
- Desktop barcode scanners 1D/2D, multi-interface, in/on-counter
- Wearable Bluetooth scanners
- Mobile computers Windows/Android, PDA/PDT, 1D/2D

[Shop Now](#)



Designed to support your everyday business, the Elo M60 Pay delivers an enterprise-grade, Android mobile POS computer ready to help you assist customers. This all-in-one device offers built-in capabilities to accept payments, conduct business, and track sales all from the palm of your hand.

KEY POINTS:

- Fully integrated payment via NFC, EMV and MSR
- 6-inch HD touch display
- Secure – PCI-PTS 6.0 Certified
- Seamless Provisioning with EloView, Google Zero Touch or GMS

[Shop Now](#)

BARCODE SCANNERS/ HANDHELD TERMINALS

Honeywell



Honeywell creates mobile computers, printers, and data capture devices that improve worker productivity in thousands of companies of all sizes around the world and the new innovations is helping retailers, distribution centers, transportation and logistics, and healthcare organizations achieve significant improvements in efficiency, speed, and accuracy in their operations.

KEY POINTS:

- Handheld Barcode Scanners 1D/2D, corded/cordless
- Desktop Barcode Scanners 1D/2D, multi-interface
- Mobile Computers and Tablets, Windows/Android
- A complete accessory portfolio

[Shop Now](#)

LANDI



Landi's mobile devices combine cutting-edge technology with sleek aesthetics, empowering you to streamline operations and elevate your business to new heights. They boast ergonomic designs combine with heavy-duty, swappable battery options, perfect for intensive use across various industries.

KEY POINTS:

- Quad-core, 2.0GHz
- 6.5" touch screen
- 2G/3G/4G, WiFi, GPS, Bluetooth 5.0 and optional eSIM
- Optional 2D scanner & Printer

[Shop Now](#)

nordic^{id}



The ergonomic design of our mobile computers is easy to hold. You know that the modular design will work with your barcode and RFID locations, just upgrade instead of replacing the device. You want software that complies with the company rules and the Android 10 fits perfectly. The IP65 rating and drop tested design will take care of that.

KEY POINTS:

- Android Mobile Computers 1D/2D, UHF RFID, NFC & Camera
- Android Ruggedised Mobile Computers 1D/2D, UHF RFID, NFC & Camera
- Reader Enhancements (Sleds) for IOS & Android, 1D/2D & UHF RFID
- Manufactured in Finland, following the Nordic tradition of highquality

[Shop Now](#)

BARCODE SCANNERS/ HANDHELD TERMINALS

SUNMI



Sunmi offers a wide range of handheld terminals and scanners with or without integrated printer, designed for a variety of use case requiring mobility, business application and data capture. With a wide range of form factors, there's always a Sunmi mobile device meeting your needs.

KEY POINTS:

- Full Android ecosystem
- Multiple options: NFC, RFID, Ticket/Label mobile printers
- Handheld & Desktop barcode scanners 1D/2D, multi-interface

[Shop Now](#)



Socket Mobile offers a range of handheld Bluetooth barcode scanners for mPOS, covering all areas from retail to ticketing to rugged - the number one choice for all iOS developers. Featuring lightweight, ergonomic structures, and a long-lasting battery to withstand entire work days. Socket Mobile products are ideal for retail POS, field service, inventory management, asset tracking and more.

KEY POINTS:

- Cordless Bluetooth barcode scanners 1D and 2D
- Handheld or hands-free in Charging Stand
- Rugged dependability options

[Shop Now](#)

unitech



Unitech is a global provider of AIDC (automatic identification and data capture) and RFID technologies with over 40 years of experience. Unitech manufactures a wide range of Enterprise solutions such as mobile computers, rugged handheld PDAs, industrial tablets, RFID readers/writers, barcode scanners (1D/2D, DPM and ESD safe), embedded readers and software solutions.

KEY POINTS:

- Handheld (corded/cordless) barcode scanners 1D, 2D, 2D Long Range, DPM, ESD, multi-interface
- Desktop barcode scanners 1D, 2D
- Embedded kiosk/self-service readers 1D, 2D, RFID
- Mobile (PDA/HHT and wearable) 1D, 2D, 2D Long Range, RFID

[Shop Now](#)

BARCODE SCANNERS/ HANDHELD TERMINALS



POS scanners can help simplify the sales process and reduce errors. Using advanced barcode scanning technology, retail and grocery scanners can quickly and accurately scan product information and help stores streamline operations. With extensive built-in features, you can take your scanning performance to the next level, boosting user efficiency and productivity and accelerating checkout times.

KEY POINTS:

- Handheld barcode scanners 1D/2D, corded/cordless, multi-interface
- Desktop barcode scanners 1D/2D, multi-interface
- With product recognition and identification applications, the built in camera can identify items

[Shop Now](#)



Designed to deliver on-the-go productivity and real-time insights into business-critical information, Zebra's versatile line of mobile computers range from rugged industrial class devices to enterprise digital assistants and shopping systems.

KEY POINTS:

- Durable device with Android's unmatched ease of use with device management tools
- The most powerful ready-to-use optional voice solutions
- Secure texting/messaging and data capture (barcode scanner 1D/2D, camera)
- 5G and Wi-Fi 6 communication interfaces

[Shop Now](#)



STANDS/MOUNTS



BOXaPOS is a company specializing in the mPOS market. The stands have original functionality combined with high quality at very realistic pricing. They have a variety of stands for tablets and printers from many manufacturers to take your offering to the next level.

KEY POINTS:

- Aggressive pricing & premium quality
- Compact minimal design, integrated wiring in bezel-less frame
- Optional housing for a large number of printers.

[Shop Now](#)



Ergonomic Solutions is an established, leading global supplier of innovative and ergonomically designed technology mounting and mobility solutions including: POS stands, mounts and enclosures for point of sale, payment and tablet technology optimised for iPad.

KEY POINTS:

- POS Stands and Mounts, including options for Printers, Payment Devices & Scanners
- Various Tablet Stands and Enclosures for iPads & Other Devices
- Custom Mounts available

[Shop Now](#)



Havis is a leading global provider of innovative mounting solutions which optimize technology utilization across a range of industries including Retail, Hospitality, and Warehousing. Compatible with many of the market's leading and most popular devices, Havis solutions deliver superior performance and enhance the experiences of both our partners and their end users.

KEY POINTS:

- Durable and aesthetic mounting solutions for Retail, Hospitality and Warehousing
- Highly configurable – build the ideal solution for your business
- Choose from a wide range of solutions (payment terminal stands, POS mounts, protective mPOS cases, self-service kiosks)

[Shop Now](#)



STANDS/MOUNTS

Heckler



Heckler's commercial iPad stands and mounts are manufactured in Phoenix, Arizona to the highest quality of standards. Heckler stands offer enhanced security for applications such as queue busting, check out, information kiosks and more. Their stands and mounts also keep cameras, buttons, and ports accessible to ensure maximum functionality.

KEY POINTS:

- High-quality, heavy steel construction is durable in high traffic areas
- Secure wall mounts, stands, and consoles for iPad to fit a variety of applications
- Custom design and branding available

[Shop Now](#)

InVue



InVue offers high-security, universal tablet stands for modern self-service applications. These rugged, all-metal stands provide integrated charging and instant mobility, securely mounting to any surface. With easy rotation and optional features like swivel bases, they enhance customer engagement while ensuring theft protection.

KEY POINTS:

- Integrated power for tablets
- Compatible with any tablet
- Very secure with their patented oneKEY ecosystem which allows multiple tablet stands to be unlocked using one key

[Shop Now](#)

star



Introducing the mUnite enclosure range by Star Micronics. Engineered with durability and mobility at the forefront, these versatile enclosures offer standalone screens, integrated printers, kiosk stands, and more, catering to diverse applications. Designed for stability, they feature freestanding structures with weighted bases, ensuring reliability in any environment.

KEY POINTS:

- Both counter and floor mounted stands available
- Compatible with Stars range of printers and scanners as well as many tablet & screen manufacturers
- Cost effective and suited to a range of Retail or Hospitality environments

[Shop Now](#)

POS/PC BOX

elo



The EloPOS Pack delivers a powerful enterprise-ready computer platform in a sleek, compact form factor. With versatile connectivity options, plug in anything from Elo's latest monitor via single cable USB-C to a legacy printer requiring a 12V powered-USB. The system provides flexibility to make upgrades as your business requirements change.

KEY POINTS:

- Choice of processors, Ram, Hard Drive
- Choice of ELO Touch Touchscreens
- Windows / Linux / Android
- Small Footprint / Securely Mountable

[Shop Now](#)

NCR VOYIX



NCR has been shaping the future of how people everywhere eat, travel, bank, and shop, since 1884. With a dedicated range designed for the POS environment you will find the perfect choice with NCR POS Terminal. Designed and built with years of experience.

KEY POINTS:

- Dedicated to Retail / Hospitality
- Range of Processors, Ram, HD, Shapes and sizes.
- Range of Peripherals and Accessories.

[Shop Now](#)

BrightSign



BrightSign is the global leader in digital signage with more than two million BrightSign players sold. Offering extensive capabilities, leading-edge technology and unrivaled flexibility, their Media Players are at the center of the BrightSign Ecosystem. Included in the Ecosystem is BrightSign OS which is the world's most reliable, secure, maintainable, and scalable digital signage solution.

KEY POINTS:

- Legendary reliability and security
- Professional-grade devices with expansive I/O connectivity
- Range of players that are upgradeable and highly customizable

[Shop Now](#)

KITCHEN SOLUTIONS

elo



Elo provides a full range of standard and custom kitchen automation products suited for use in food service. Kitchen Display Systems unite tableside ordering, POS, self-service and food prep with a kitchen display system that synchronizes orders and creates efficiencies across the restaurant.

KEY POINTS:

- From 10"-27" Touchscreen monitor, open frame and with integrated computer
- With Elo's software agnostic platform, choose the software you want to create a powerful KDS station that transforms your restaurant ticket system.

[Shop Now](#)

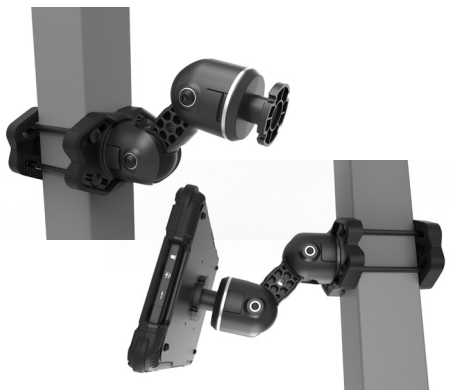


Ergonomic Solutions is an established, leading global supplier of innovative and ergonomically designed technology.

KEY POINTS:

- Space saving solutions
- Ergonomics important / correct height for baristas/server
- Lots of liquid and food so easy to clean

[Shop Now](#)



Rugged technology mounting solution for high traffic hospitality environments, the WL-1000 series is durable and versatile and is constructed with the latest high-performance materials. The ideal solution for mounting screens, tablets, scanners and printers.

KEY POINTS:

- Built using the latest Engineered Materials for superior durability.
- Fits any Amps or VESA standard device weighing up to 10lbs
- Push-button macro adjustments for easy installation and device positioning
- Universal Clamp and back-to-back arm mounting

[Shop Now](#)

INTERACTIVE DIGITAL SIGNAGE



BrightSign®

BrightSign is a global market leader of media players that are built specifically for digital signage with a commercial grade OS that delivers a cloud-connected experience for real time player access anytime, anywhere. Our solid-state players deliver unmatched reliability, exceptional video quality and sophisticated functionality without the PC hassles.

KEY POINTS:

- Delivers quality experiences you can rely on
- Offers models to match your application
- Provides stellar video and HTML performance
- Includes a free BSN.cloud subscription

[Shop Now](#)

elo



ELO's commercial-grade interactive digital signage displays are designed to captivate the audience acting as an interactive billboard. From an interactive digital display to a touch screen kiosk, Elo interactive touch screen solutions create high-impact experiences.

KEY POINTS:

- 10" to 65" touch screens with or without PC
- Android / Linux / Windows
- Range of Edge Connect accessories: barcode, camera, NFC/RFID etc.
- Flexible mounting - wall, shelf, desk and floor stands

[Shop Now](#)

BlueStar offers a diverse range of digital signage solutions tailored for various industries including Retail, Hospitality, and Healthcare. Whether you prefer building your own solution with our provided components or seek our guidance on what would work best, we've got you covered. Explore our comprehensive Digital Signage brochure for more information on our offerings.

SELF SERVICE

NCR VOYIX



NCR Corporation is a global technology leader, enhancing consumer-business interactions in various industries. With a legacy spanning over two decades of self-checkout expertise, their Self Service Checkout options have top-tier quality components and sleek cutting-edge designs. Their solutions optimize space, support debit/credit payments and offers optional bagging areas.

KEY POINTS:

- Many accessories available such as bagging modules, tri light or coupon bin
- Toughness and long life built in, with hardened materials and components to survive self-service
- Smooth and responsive projected capacitive (PCAP) all-glass screen with 10-point multi-touch

[Shop Now](#)

elo



Elo open frame touchscreen display deliver an industrial-grade solution that is cost-effective for OEMs and systems integrators requiring a reliable product with a long life cycle. They offer the versatility needed for commercial kiosk applications from self-service and gaming to industrial automation and healthcare.

KEY POINTS:

- Wide range of sizes from 10" to 55"
- Touch thru glass functionality
- High brightness models available

[Shop Now](#)

Bluestar offers a diverse range of self-service kiosks and OEM solutions tailored for various industries including Retail, Hospitality, Transport & Logistics, and Healthcare. Whether you prefer building your own kiosk with our provided components or seeking ready-to-use configurations inclusive of all necessary parts, we've got you covered. Explore our comprehensive Self-Service - OEM Kiosk brochure for more information on our offerings.

ALL-IN-ONE SOLUTIONS

CUSTOM®



The all-in-one solution created by Custom can boast superior performance together with a compact and stylish design. The extreme compactness, the advanced technologies and the stunning aesthetic make it the ideal solution for Retail applications.

KEY POINTS:

- Ultra-compact and unique design
- Embedded thermal printer
- Vertically mounted display

[Shop Now](#)

LANDI



Landi's mobile devices combine cutting-edge technology with sleek aesthetics, empowering you to streamline operations and elevate your business to new heights. They boast ergonomic designs combine with heavy-duty, swappable battery options, perfect for intensive use across various industries.

KEY POINTS:

- Quad-core, 2.0GHz
- 6.5" touch screen
- 2G/3G/4G, WiFi, GPS, Bluetooth 5.0 and optional eSIM
- Optional 2D scanner & Printer

[Shop Now](#)

star



With outstanding connectivity and design plus intuitive functionality and simple integration, Star's mPOP combined Bluetooth printer and cash drawer delivers an advanced POS solution ready to work with your chosen mobile software and card payment system.

KEY POINTS:

- Android / Windows / iOS Compatible
- Bluetooth Connectivity
- Optional tablet stand, customer display, buzzer and a range of compatible scanner options.

[Shop Now](#)

ALL-IN-ONE SOLUTIONS

SUNMI



From classic to compact form factors, Sunmi's all-in-one solutions provide high performance and improve customer experiences. With integrated printer and multiple peripherals connections, Sunmi all-in-one will be at the heart of your POS system.

KEY POINTS:

- High performance Android platform
- Display and customer screen available in different sizes
- High speed integrated printer with auto-cuter

[Shop Now](#)

CARD PRINTERS

HID



Explore our wide selection of FARGO® card printers that range from plug-and-play, entry-level offerings to more sophisticated printing solutions that offer more advanced features, versatile encoding and lamination options.

KEY POINTS:

- Simple.
- Reliable.
- Affordable.

[Shop Now](#)

PAYMENT SOLUTIONS

elo



From Android mobile POS M60 computer to the latest 22" Elo Pay touchscreen accepting payments on Elo devices has never been easier. Elo Pay Integrated Payment Solutions offers comprehensive payment services that enables merchants to process transactions with confidence.

KEY POINTS:

- Elo Pay terminals use one payment kernel for simplified, secure, and enhanced user experience
- Ready-to-use payment devices and services with easy integration
- Supports multiple payment apps, secure encryption, tokenization, TMS, and easy-to-use APIs

[Shop Now](#)



Ergonomic Solutions is the global leader in Payment Terminal Mounting. Whatever type of payment terminal you use, Ergonomic Solutions has secure card reader stands and mounting solutions for all static and mobile payment solutions. These solutions provide faster customer service at payment points anywhere.

KEY POINTS:

- Payment device mounts & adapters – static, contactless and mobile
- Pole mount options: cable management / tilt and rotation
- Protect from theft and tampering: Security tethers and locks

[Shop Now](#)

HAVIS



Havis has been delivering industry leading payment solutions into top global businesses for 20+ years. We offer an expansive portfolio of off-the-shelf and custom solutions, delivering the ideal product for even the most challenging environments.

KEY POINTS:

- FlexiPole fixed payment terminal stands (quick release, locking, tethered) - easily upgraded, available for all main payment devices.
- MPOS Pairing Sleds for seamless communication and functionality.
- Protect and Charge solutions for added protection and seamless slide-in charging.

[Shop Now](#)

PAYMENT SOLUTIONS

LANDI



Landi has many devices which are SoftPOS ready from POS terminals to mobile devices there are many options for every use case. Their devices are supported by a network of payment partners which complete the payment solution and make payments easy.

KEY POINTS:

- Android NFC ready
- Mobile Devices and POS Terminals available
- Can seamlessly start a transaction on one the POS Terminal then finish it on another device

[Shop Now](#)

SUNMI



Sunmi's payment devices are first and foremost a range of products fully certified internationally by payment partners. Supporting a powerful platform for commercial Android applications, the devices support all classic EMV payment methods and emerging methods (QR code, facial recognition, BLE).

KEY POINTS:

- Simplified integration of payment solution
- Secured OS with full Android compatibility
- Multiple form factors with or without integrated printer

[Shop Now](#)

ZEBRA



The PD20 is an add-on module that turns Zebra compatible handheld mobile computers and tablets into mobile POS (mPOS) stations. You can purchase new devices with the PD20 solution or add the PD20 solution to your existing compatible devices. Now, retailers can enable payment for purchases anywhere.

KEY POINTS:

- Supports all card modalities — tap, swipe and insert
- Certified for all major card brands
- PCI certified, right out of the box

[Shop Now](#)

CHARGING, SECURITY & TRACKING

podloc



PODLOC is an all-in-one solution for storing, securing, tracing, and charging mobile devices. It reduces device loss, saves space, and ensures devices are always charged. Convenient and upgradable, it offers fast ROI. It improves device availability and provides insights to quickly retrieve lost or damaged devices.

KEY POINTS:

- Support for multiple manufacturers including Honeywell, Datalogic, Zebra and more
- Secured assets & Less points of failure
- Lock charge and Manage
- Extendible and modular wall mounting options

[Shop Now](#)

CASH MANAGEMENT



apg® is a global manufacturer of POS and cash management solutions, serving a variety of customers and industries. They have a reputation as the supplier of choice for retail, grocery, convenience, hospitality, bakery, quick-serve restaurants, and more. From our general and bespoke cash drawers, to mobility, smarttill® Intelligent Cash Drawer solution, kiosks, and POS peripherals, they deliver innovative technologies that enhance efficiency and security.

KEY POINTS:

- RJ11 Connection
- Many custom options available
- Durable with up to 4 million transactions

[Shop Now](#)



Star is a global manufacturer of secure cash drawer solutions for traditional and tablet POS applications. Star's mPOP offers a unique mobile point of purchase solution for retailers requiring a Bluetooth printer and cash drawer to link with their choice of mobile device. They also provide traditional cash drawer options for a variety of use cases.

KEY POINTS:

- RJ11 Connection
- White / Grey / Black
- Matches Star Printers

[Shop Now](#)



Experience maximum capacity and smarter cash handling with the Sunmi Cash Drawer. Featuring a front media slot, 5 bill trays, and 4 fixed and 6 removable coin trays, it accommodates over 20 currencies. Built for durability, it can bear up to 10kg and supports over 1,000,000 operations.

KEY POINTS:

- RJ12 Connection
- > One million operations
- Compatible with over 20 currencies

[Shop Now](#)



RFID



From lightweight handheld readers for retail environments, to ruggedized units for logistics and manufacturing, Honeywell provide a complete line of RFID solutions. Integrate these products with Honeywell mobile computers, barcode scanners, software, and services to create comprehensive solutions to track and manage with confidence.

KEY POINTS:

- A full portfolio dedicated to RFID
- IH45 RFID Reader paired with Mobile Computer
- 8690i Wearable RFID Mini computer
- PM and PX Series - Mission critical Printers with RFID

[Shop Now](#)



Impinj (NASDAQ: PI) is a leading provider of RAIN RFID solutions. Our platform, comprising both hardware and software, uses RAIN RFID to deliver timely information about these items to the digital world, thereby enabling the Internet of Things.

KEY POINTS:

- Improve inventory visibility
- Reduce out-of-stocks
- Enable omni-channel fulfillment
- Enhance shopping experiences
- Prevent loss

[Shop Now](#)



Keonn provides system integrators with the most complete, seamless and advanced set of RFID hardware and software solutions to enhance the customer shopping experience at retail stores and to track and trace items at warehouses, libraries, hospitals and other spaces.

KEY POINTS:

- RFID readers, multiplexers, antennas
- Encoding systems
- RFID inventory and tracking systems, RFID interactive systems, RFID payment systems, RFID loss-prevention systems
- Cloud software

[Shop Now](#)



RFID

nordic id



The go-to partner for RAIN RFID solutions with over 30 years' experience in RFID. Our extensive portfolio includes RAIN RFID mobile computers, Fixed readers, antennas, and enhancement (sled) readers. Nordic ID solutions enable customers to manage their business processes by bringing transparency and predictability to processes and operations.

KEY POINTS:

- Future-proof Android Mobile Computers, UHF RFID, 1D/2D, NFC and Camera
- Reader Enhancements (Sleds and Wearables) for IOS and Android
- UHF RFID Fixed Readers with LINUX computers & customisable portal/gate solutions
- Single API support for integration of all Nordic ID Readers

[Shop Now](#)

rf IDEAS



RF IDEAS designs, develops and manufactures a complete line of pcProx® credential readers that support nearly every proximity and contactless smart card in use worldwide.

KEY POINTS:

- Protect and secure confidential information through enhanced authentication
- Integrate with traditional ID badges for more flexibility
- Designed to interface with a variety software solutions

[Shop Now](#)

TSC PRINTRONIX AUTO ID



From high performance enterprise designs, compact industrial models, lower-volume desktop, and mobile to print engine models, our RFID printer family is designed for diverse requirements.

KEY POINTS:

- Deep Collaboration with Multiple Standards Organizations
- Easily and Quickly Switch Between Different Label Constructions
- High Speed Encoding for Better Productivity

[Shop Now](#)

RFID

TECHNOLOGY SOLUTIONS UK LTD



For over two decades, TSL®, part of HID, has delivered innovative data capture solutions to major companies all around the world using a global network of distributors and system integrators. Specialist in-house teams design all aspects of the finished products and software ecosystems, including electronics, firmware, application development tools, RF design and injection mould tooling.

KEY POINTS:

- Multi-Platform Compatibility
- Apple MFI Approval

[Shop Now](#)

unitech



Unitech is a global provider of AIDC (automatic identification and data capture) and RFID technologies with over 40 years of experience. Unitech manufactures a wide range of Enterprise solutions such as mobile computers, rugged handheld PDAs, industrial tablets, RFID readers/writers, barcode scanners (1D/2D, DPM and ESD safe), embedded readers and software solutions.

KEY POINTS:

- Omni-channel solutions
- RFID handheld, pocket sized and snap-on gun grip accessory readers/writers
- RFID fixed and modules readers/writers
- RFID standard antenna, gate/port/shelve antenna and RFID tunnel reader/writers

[Learn More](#)

ZEBRA



Only Zebra provides end-to-end solution simplicity, with everything you need to implement RFID in your organization — from well-tested industry-leading infrastructure to the expertise you need to maximize the benefits of RFID in your enterprise.

KEY POINTS:

- Printers / Readers / Antennas
- Labels / Tags / Cards
- Over 300 RFID technology patents
- Mobile and Desktop options

[Shop Now](#)

ACCESSORIES & CONSUMABLES



We understand that your complete satisfaction is based on efficiency, quality and total solution support. This is why we offer a comprehensive selection of Genuine Supplies that will provide GUARANTEED performance through your TSC Auto ID & Printronix Auto ID Industrial, Desktop or Mobile printer.



KEY POINTS:

- Labels AND Thermal Transfer Ribbons for Industrial, Desktop and Mobile Printer Applications
- Receipt/Transaction Supplies for Mobile Printer Applications
- Specialty/Custom Labels, Tags and Tickets for any Application

[Shop Now](#)

MOBILIS®



French manufacturer of protective & transport solutions for mobile computers & scanners, Mobilis has 30 experts in mobile working are constantly on hand, listening to your needs and how they develop over time. Mobilis has a large range of datacapture cases, payment terminal cases, screen protectors, holsters, and several accessories to protect and transport your devices.

KEY POINTS:

- DEDICATED PRODUCTS FOR EACH DEVICE : For any use and job, for any brand or model, there is a MOBILIS® solution !
- HIGH PROTECTION : dedicate for an intensive use on the filed.
- ERGONOMIC SOLUTIONS : allow to make easy the job.

[Shop Now](#)

CARD ACCESSORIES

Manufacturer of people ID accessories and supplies

KEY POINTS:

- More than 450 references
- Strict quality control
- Fast delivery

[Shop Now](#)



ACCESSORIES & CONSUMABLES

CUSTOMER DISPLAYS & SECOND SCREENS

- From 2 x 20 Line displays to 7-12" customer facing touchscreens.
- Stand alone or different mounting options.

MAGNETIC STRIPE READERS (MSR)

- Integrated from manufacturer on touch screens.
- Stand Alone USB, 3 Track, Hi-Co / Lo-Co readers.

PAYMENT TERMINALS

- Stand alone options
- Multi-manufacture offering

CABLES

- We can supply / add in non-supplied cables, Power / Mini USB / USB / Ethernet / RS232.

RFID READERS

- Integrated from manufacturer on touch screens.
- Stand Alone USB.

OTHER CONSUMABLES

- Direct Thermal & Dot Matrix Paper Rolls / Tickets / Labels / Wristbands / Ribbons



ADDITIONAL VERTICAL SOLUTIONS & INSIGHTS

**ID &
SECURITY
SOLUTIONS**
POWERED BY BLUESTAR

**HEALTHCARE
SOLUTIONS**
POWERED BY BLUESTAR

**VAR
MED**

**MOBILITY
SOLUTIONS**
POWERED BY BLUESTAR

- TRANSPORT
- LOGISTICS
- FIELD SERVICE
- BLUE LIGHT

**TASTY
BURGER**

**SELF-SERVICE
SOLUTIONS**
POWERED BY BLUESTAR

- OEM
- KIOSKS

**DIGITAL
SIGNAGE
SOLUTIONS**
POWERED BY BLUESTAR

**WAREHOUSE
& MANUFACTURING
SOLUTIONS**
POWERED BY BLUESTAR

- DISTRIBUTION
- FULFILLMENT

**RFID
SOLUTIONS**
POWERED BY BLUESTAR



**WANT TO KNOW
MORE ABOUT
BLUESTAR?**

Contact us:
ask.blue@eu.bluestarinc.com

