



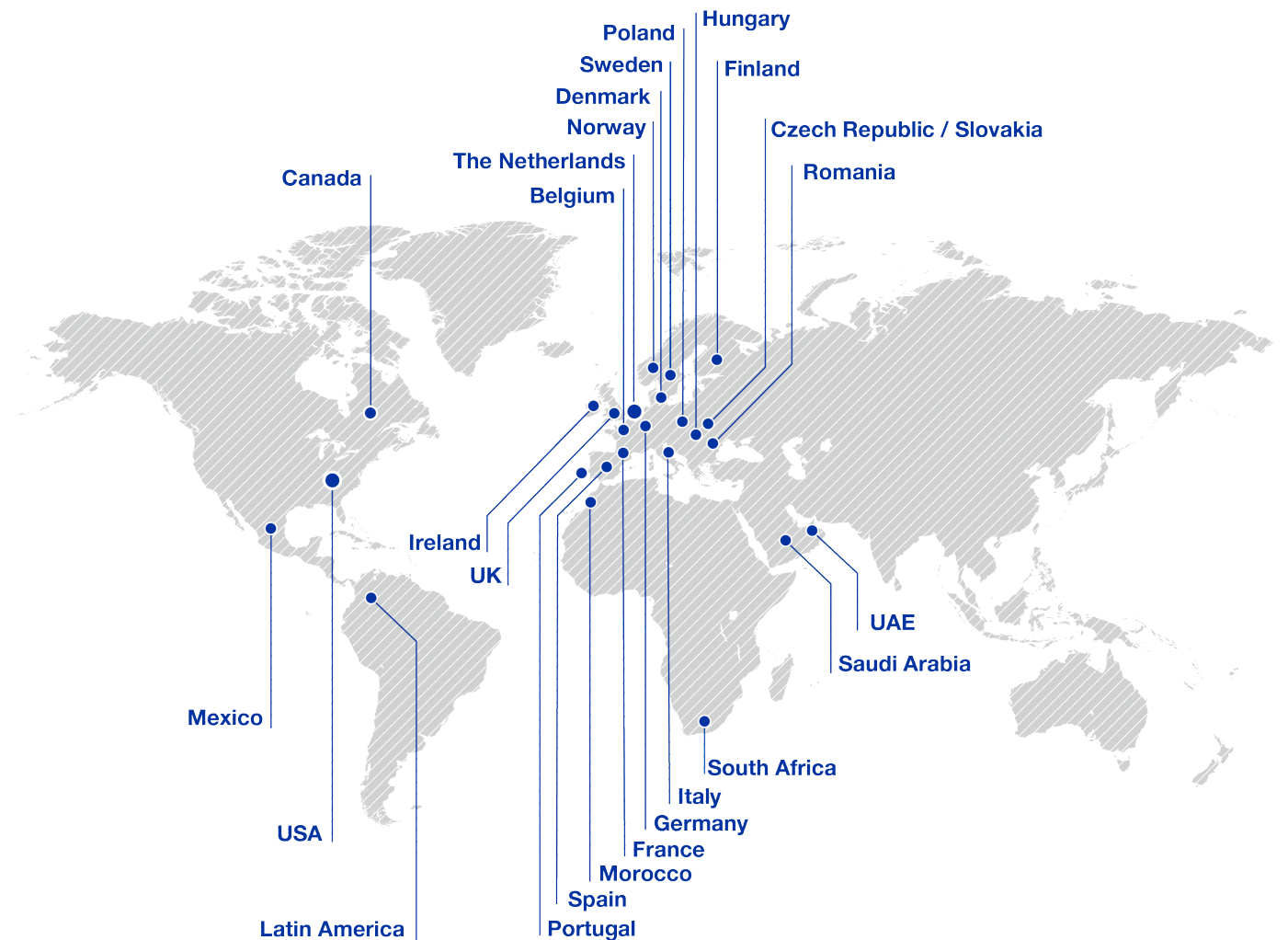
WAREHOUSE & MANUFACTURING SOLUTIONS

POWERED BY BLUESTAR

— DISTRIBUTION
— FULFILLMENT



LOCATIONS / EMEA



Belgium
+32 23 420408
info.be@eu.bluestarinc.com

Czech Republic & Slovakia
+420 46 7027830
info.czs@eu.bluestarinc.com

Denmark
+45 8988 3663
info.dk@eu.bluestarinc.com

Finland
+358 94 2732280
info.fi@eu.bluestarinc.com

France
+33 4 75 71 08 50
info.fr@eu.bluestarinc.com

Germany (DACH)
+49 69 31090150
info.de@eu.bluestarinc.com

Hungary & EE
+36 1 808 8275
info.hu@eu.bluestarinc.com

Ireland
+353 1 968 2580
info.ie@eu.bluestarinc.com

Italy
+39 051 9525685
info.it@eu.bluestarinc.com

Morocco
+212 675 885 319
info.mo@eu.bluestarinc.com

Norway
+47 22838400
info.no@eu.bluestarinc.com

Poland
+48 22 1531600
info.pl@eu.bluestarinc.com

Portugal
+351 707 502 591
info.pt@eu.bluestarinc.com

Romania
+40 740 110 111
info.ro@eu.bluestarinc.com

Saudi Arabia
+966 545336959
info.ksa@eu.bluestarinc.com

South Africa
+27 837 30 65 34
info.sa@eu.bluestarinc.com

Spain
+34 902 11 91 03
info.es@eu.bluestarinc.com

Sweden
+46 40 6688508
info.se@eu.bluestarinc.com

The Netherlands
+31 880 233 633
info.nl@eu.bluestarinc.com

UAE
+971 504584404
info.me@eu.bluestarinc.com

United Kingdom
+44 1785 218500
info.uk@eu.bluestarinc.com



BLUESTAR. BUSINESS MADE SIMPLE.

BlueStar is a leading global distributor specializing in solutions-based technology, including Digital Identification, Mobility, Point-of-Sale, RFID, Digital Signage, Robots, and Security. We exclusively support value-added resellers, integrators, and ISVs with complete solutions, business development, and marketing support.

BlueStar provides end-to-end assistance for any project no matter the size or the market. We are your one-stop shop for all your technology needs, with a focus on flexibility and efficiency. Our dedicated sales and technical teams work alongside your operations to ensure seamless implementation.

Our commitment to your success, backed by our available robust financial resources, helps you become more agile, capable, and profitable.

OUR TEAMS ARE AN EXTENSION OF YOUR COMPANY.

WE ARE YOUR DEDICATED RESOURCE, COMMITTED TO HELPING YOU GROW YOUR WAREHOUSE AND MANUFACTURING-FOCUSED BUSINESS.

THE BLUESTAR DIFFERENCE



BLUESTAR SERVICES

- Configuration
- Staging
- Custom packaging
- Kitting and Bundling



LOGISTICS EXCELLENCE

- Centralized warehouse
- Same-day shipment
- EMEA drop-shipment
- Largest solutions-based stock in Europe, Middle East & Africa



LOCAL SUPPORT

- 27+ locations across EMEA
- 18+ local language spoken in Sales, Support and Business
- Specialized local BDM teams in a brand or vertical market



BLUESTORE - ONLINE PLATFORM

- One-stop-shop, more than 90 vendors
- Order, Invoice and RMA Management
- Quick Ordering function
- Price Exceptions Visibility



CONTRACT & RENEWALS

- Trained team for efficient service orders
- Secure recurring revenue with renewals team
- Expertise in managing service opportunities
- Ensure order cleanliness and correctness



GLOBALCARE

- Upscale Globally
- Global network of experts
- Global warehouse and shipment



ANDROID COMPETENCE CENTRE

- Zero Touch deployment
- Google Play app management
- Google Play Protect
- Android Enterprise Recommended solutions



DIGITALLY READY

- ERP Import - FTP server
- Stock updates every 30 min.
- XML Orders and Invoices
- EDI connection available
- Manage with API's



[Visit ISV Portal ►](#)

ACCELERATE YOUR BUSINESS WITH BLUESTAR.

Discover TEConnect, an exclusive BlueStar program designed to help Independent Software Vendors (ISVs) grow their business. If you develop software solutions within the Warehouse and Manufacturing ecosystem, TEConnect links you with top manufacturers, system integrators, and resellers, providing unique networking opportunities to foster meaningful partnerships.

WAREHOUSE & MANUFACTURING SOLUTIONS

BlueStar offers AutoID solutions to meet the warehouse and manufacturing industry demands, providing advanced data capture terminals, high-performance barcode scanners, reliable label printers, and robust RFID and network systems. These technologies optimize inventory management, improve order fulfilment, and reduce operational errors. As the industry faces increasing automation, compliance requirements, and a need for real-time data, our solutions are designed to boost productivity and ensure industry-standard compliance. BlueStar's comprehensive offerings also include a wide range of document management and labelling software, WMS and ERP-compatible solutions, services, and accessories.

15%

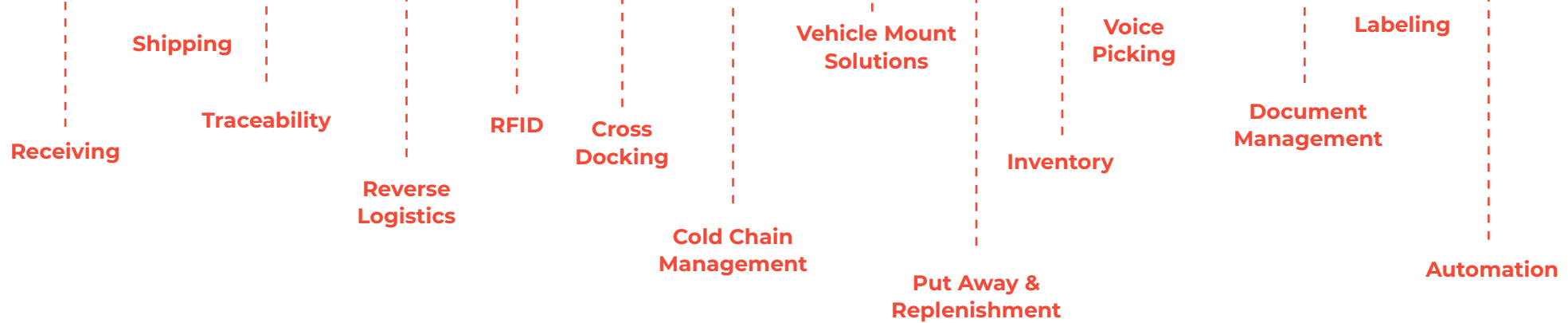
of warehouse managers report intentions to invest in AutoID technology and related software solutions, over the next few years.

75%

is the 5G related technologies growth expected in the invest of warehouse and manufacturing plant in over the coming years

30%

is the reduction of errors shown in companies with a real software integration compared to non-integrated systems.



INVENTORY MANAGEMENT

- Barcode scanner
- Wireless WiFi6 mobile computer (Optional 5G)
- Industrial label printer

Warehouse staff use mobile computers with barcode scanners to update inventory in real-time during receiving, picking, and shipping. Barcode labels on shelves and bins aid in efficient item location.

AUTOMATED ROBOTIZED WAREHOUSE

- Latent mobile robots
- Fixed or hand-held devices with RFID reading capacity

RFID tags on pallets, containers, or items allow RFID readers to capture data automatically. Mobile robots use this data to transport goods between storage, production, and shipping areas autonomously.

COLD STORAGE SOLUTION

- Cold storage ready mobile computer
- Cold storage vehicle mount computer
- Freezer resistant barcode scanner

Maintain accurate inventory tracking and ensure compliance with temperature-sensitive regulations. These technologies reduce spoilage and ensure product integrity throughout the storage and distribution process.

PICKING SOLUTION

- Wearable terminal
- Finger/hand mount scanner
- Industrial headset voice picking application
- Mobile label printer

Wireless and voice picking technology enhances warehouse efficiency, accuracy, and worker productivity during the picking process

BARCODE SCANNERS



Datalogic's PowerScan industrial handheld readers are data collection's definitive example of ruggedness and durability. Often imitated, but never rivaled, the PowerScan products rise above the fray with their outstanding performance and unyielding reliability. CODiScan Bluetooth wearable scanners are lightweight in size and heavyweight in performance.

KEY POINTS:

- Wireless and contactless charging technology (Bluetooth and STAR Radio Wireless)
- Handheld barcode scanners 1D/2D, corded /cordless, multi-interface
- Desktop barcode scanners 1D/2D, multi-interface, in/on-counter
- Wearable Bluetooth scanners with smart aiming system

[Shop Now](#)

Honeywell



From rugged warehouse environments to ultra-rugged manufacturing sites, you can trust Honeywell handheld, industrial-grade barcode readers to provide superior durability and reliability. Honeywell scanners are encased in impact-ready water and dust-proof housings, and specifically built to address common challenges in different vertical markets and environments and rugged mobile jobs.

KEY POINTS:

- Granit XP Ultra-Rugged Scanners
- Superior indoor and outdoor aiming visibility
- Near field scanning to extreme long range scanning
- Built to survive harsh treatment and toughest conditions

[Shop Now](#)

PROGLOVE



The Proglove wearable scanner enhances operational efficiency by reducing errors, saving time, and increasing productivity. It simplifies tasks for workers, eliminating the need to handle the scanner manually for each part. This improves dexterity and provides real-time feedback, enabling seamless navigation between processes and workstations for improved efficiency and accuracy.

KEY POINTS:

- Multiple Accesories
- Increase productivity up to 20%
- Midrange, estándar range and Multirange
- Wireless transmission

[Shop Now](#)

BARCODE SCANNERS



Unitech barcode scanners are ergonomically designed to increase productivity and reduce fatigue. They feature easy configuration, multiple interface options, and data editing. Unitech continues to satisfy customer needs with new wireless and image scanning technologies.

KEY POINTS:

- The ring scanner features wearable design that gives you freedom of movement.
- Delivering the superior barcode scanning performance and mobility wireless design, the Bluetooth 2D barcode scanner is suitable for a wide range of markets and applications.

[Shop Now](#)



Zebra's ultra-rugged scanners were built for the unique challenges of manufacturing and warehouse tasks. These scanners are designed to withstand harsh conditions, read at astonishing speeds and provide workers with non-stop, full-shift power. Wearable scanners can provide the hands-free scanning your workforce needs to maximize productivity.

KEY POINTS:

- Corded, cordless and wearable models
- Multiple data capture models; standard range, high density, DPM, extended range and more
- Using wearable or fixed-mount presentations, workers in the packing and staging area can focus on the task at hand

[Shop Now](#)

MOBILE COMPUTERS



Datalogic's Skorpio X5 is the most advanced mobile computer with the largest scan engine choice on the market. The Skorpio X5 family offers the choice between Linear Imager, Standard 2D Imager, Mid-Range Imager, and the unparalleled 2D near-far top performing Extra-long Range (XLR).

KEY POINTS:

- Ultra-rugged
- Wireless charging to eliminate contacts failure and reduce maintenance cost
- Advanced imagers with Datalogic's patented 'Green Spot' technology for visual good-read feedback

[Shop Now](#)

Honeywell



Honeywell has a wide variety of purpose-built ruggedized mobile computer devices, capable of meeting business-critical demands in a variety of industries and environments. The portfolio consists of full touch devices and keyboard devices for indoor or outdoor applications in retail, healthcare, warehouse, and Transport & Logistics.

KEY POINTS:

- Mobility Edge Platform series; industries best lifecycle, stability, and security
- ScanPal series; Enterprise-class, rugged, reliable, high-quality
- Full range of communication and connectivity alternatives
- Highly accurate scan engines
- Wide range of flexible accessory portfolio

[Shop Now](#)



The 4-inch Rugged Handheld Terminal is an ergonomic one-hand operation handheld terminal with keypad and powerful data collection solutions. Offering Android 10 OS with GMS certification, it is equipped with Qualcomm® Artificial Intelligence (AI) CPU to deliver users excellent performance for smarter, more intuitive interactions.

KEY POINTS:

- Offers Android OS with GMS certification,
- Superior 2D scanning performance
- Support MDM software and utilities such as MoboLink, StageGo, Ivanti Wavelink and StayLinked

[Shop Now](#)

MOBILE COMPUTERS



Whether you are responsible for a manufacturing warehouse, a distribution center, or managing inventory in your retail backroom, being well-connected and having visibility into all your assets, people, and processes at all times is crucial to having an integrated, productive, profitable, and compliant supply chain.

KEY POINTS:

- Highly Durable devices with Android's unmatched ease of use with device management tools
- Secure texting/messaging and data capture (barcode scanner 1D/2D, camera)
- 5G and Wi-Fi 6 communication interfaces

[Shop Now](#)

OPEN FRAME TOUCHSCREENS



Elo's highly reliable open frame displays are purpose-built for integration into equipment, making them the best choice by the world's leading suppliers of industrial equipment for human-machine-interface devices. With a full line of touchscreens, sensors and integrated touch display modules, Elo has the components needed to help streamline the supply chain and simplify assembly.

KEY POINTS:

- Available in sizes ranging from 10" to 43"
- Android or Windows platform
- Edge Connect accessories expand use

VEHICLE MOUNTED TERMINALS



Offered in a range of sizes from a compact 7" version for easy hand holding to a huge 21" display industrial computer., Datalogic has a form factor to fit every requirement. Tailored for warehouse management, the Rhino vehicle mount computer increases productivity with its easy integration of PowerScan or other automated data collection devices.

KEY POINTS:

- Sealed design tested to IP65/IP67
- Choice of Microsoft Operating Systems or Android™
- Anti-glare multi-touch screen, with gloves support

[Shop Now](#)

Honeywell



Benefits of the Honeywell vehicle-mount computer portfolio include powerful, flexible and application-expandable solutions to future-proof your operations, rugged construction to minimize downtime and maintenance, and Windows or Android operating systems for simple integration and deployment.

KEY POINTS:

- Thor VM-series based on the Mobility Edge platform, industries best lifecycle, stability, and security
- Wide range of flexible accessory portfolio
- Built tough to handle harsh warehouses, ports, and manufacturing environments

[Shop Now](#)



Empower your front-line workers to take their work performance to new heights with Zebra's ultra-rugged vehicle-mounted computers. Designed to be mounted on material handling equipment, our computers are built to withstand harsh warehouse environments, cold chains, busy yard locations, shocks, vibrations, and more.

KEY POINTS:

- 8" and 10" versions available
- Cold chain operations
- Corded/Bluetooth barcode scanning support
- Integrated alphanumeric keyboard with touchscreen (8" version) or optional keyboard (10" version)

[Shop Now](#)

ROBOTICS

HIKROBOT



Characterized by its lifting mechanism, the Latent Mobile Robot (LMR) has an optimized motion performance and enhanced safety protection. It helps customers create a safer working environment and more cost-effective productivity.

KEY POINTS:

- Characterized by its lifting mechanism
- Optimized Motion Performance
- Enhanced safety protection

[Shop Now](#)

HIKROBOT



The Forklift Mobile Robot (FMR) focuses on the automatic transfer of standard bins/pallets. It adopts high precision laser SLAM navigation, vision navigation, etc.

KEY POINTS:

- Automatic transfer of standard bins/pallets
- High precision laser SLAM navigation
- Rated speed of 1 mtr/sec
- Run time of 6 to 8h, charging time of 2h *
- Rated load between 600kg to 1000kg / 1300lbs to 2200lbs *
- Lifting height between 13 & 20cm

[Shop Now](#)

HIKROBOT



The Carton Transfert Unit (CTU) can transport or storage single/multiple bins. Precise inbound and outbound with highdensity storage, providing efficient picking.

KEY POINTS:

- Transport & store single/multiple bins
- Precise inbound & outbound
- Rated speed of 1,5 mtr/sec
- Run time of 8 to 10h, charging time of 2h
- Rated load is 250kg / 550lbs
- Lifting height between 30cm & 4 mtr

[Shop Now](#)

LABEL PRINTERS

brother



Brother understands the critical needs of companies at key points in the process, such as precise data interpretation. Brother works closely with its clients to address challenges such as durable labels for pallets, portable printers, and consumables reduction. Its solutions ensure excellent customer service and on-time deliveries.

KEY POINTS:

- Productivity: up to 356 mm/sec (203 dpi).
- Robustness: metal equipment designed to work up to 24x7.
- For high volumes starting at 1,000 labels per day.
- High autonomy: ribbon up to 600m.
- Rewinder included in 2 models.

[Shop Now](#)

CITIZEN



Citizen has built for durability and compatibility in warehouse, shipping and production environments. These machines include Citizen's innovative Cross-Emulation™ feature and our pioneering Hi-Lift™ mechanism for easy access to ribbons and media.

KEY POINTS:

- Direct Thermal and Thermal Transfer
- No more unreadable labels - the ARCP™ ribbon control technology assures clear prints.
- Ultra fast print out - up to 300mm per second
- Optional interfaces available: Wireless LAN, Serial and Parallel
- Cross Emulation,

[Shop Now](#)

Honeywell



Honeywell industrial label printer family is recognized for durability and reliability, and to offer error-proof labeling, easy programmability, advanced networking connectivity and security, and RFID and linerless technology. Honeywell industrial printers easily handle any type of application, from commercial light-volume needs to rugged, around-the-clock printing performance.

KEY POINTS:

- Flexible, compact, and programmable
- Supports variable network protocols and multiple print languages
- Ruggedized design, built for tough environments
- Honeywell Printer Edge platform with easy setup, quality output, enhanced security

[Shop Now](#)

LABEL PRINTERS

SATO



Sato is renowned for high quality and reliability in printers with longer product life stands. Their solutions are tailored for demanding manufacturing, improving efficiency, cutting costs, and boosting productivity. With automated data management and diverse barcode printing, SATO enhances traceability, visibility, and transparency in complex manufacturing systems.

KEY POINTS:

- Direct Thermal / Thermal Transfer
- Increased precision for micro label applications
- Simple to operate, high printing accuracy

[Shop Now](#)

TSC PRINTRONIX AUTO ID



TSC Printronix Auto ID is a leading designer and manufacturer of innovative thermal printing solutions. TSC Auto ID offers budget-friendly desktop printers to high-performance industrial solutions including rugged mobile printers. Printronix Auto ID offers premium, enterprise-level applications with a selection of high-end features including RFID encoding and integrated barcode verification.

KEY POINTS:

- Mobile printers are capable of printing linerless labels that help reduce waste and boost productivity
- Desktop printers come standard with premium features like high-resolution, and remote printer management
- Industrial printers come enhanced with features like colorful LCD display

[Shop Now](#)

ZEBRA



Printer failures are a thing of the past with Zebra's self-reliant, durable and eager-to-work printers. From simplified set-up to quality construction to performance-enhancing Print DNA software toolset—Zebra allows you to print with confidence every time.

KEY POINTS:

- Zebra industrial printers are designed for hard and demanding environments.
- Reliable Printers with Dependable Performance
- Printer with Build-in Security and Intelligence with Zebra Print DNA

[Shop Now](#)

RFID

Honeywell



From lightweight handheld readers for retail environments, to ruggedized units for logistics and manufacturing, Honeywell provide a complete line of RFID solutions. Integrate these products with Honeywell mobile computers, barcode scanners, software, and services to create comprehensive solutions to track and manage with confidence.

KEY POINTS:

- A full portfolio dedicated to RFID
- IH45 RFID Reader paired with Mobile Computer
- 8690i Wearable RFID Mini computer
- PM and PX Series - Mission critical Printers with RFID

[Shop Now](#)



Impinj products are built on RAIN RFID technology and extend connectivity from physical items to edge devices to the cloud, providing industry-leading performance that helps organizations operate efficiently, businesses increase profit, and people live easier.

KEY POINTS:

- Impinj readers are edge devices that enable bidirectional, wireless communications between applications and everyday items.
- Read, write, and authenticate endpoints or tagged items
- Impinj fixed readers offer flexible implementation to meet your unique needs

[Shop Now](#)



Keonn provides system integrators with the most complete, seamless and advanced set of RFID hardware and software solutions to enhance the customer shopping experience at retail stores and to track and trace items at warehouses, libraries, hospitals and other spaces.

KEY POINTS:

- RFID readers, multiplexers, antennas
- Encoding systems
- RFID inventory and tracking systems, RFID interactive systems,
- RFID payment systems, RFID loss-prevention systems
- Cloud software

[Shop Now](#)

RFID

nordic id



The go-to partner for RAIN RFID solutions with over 30 years' experience in RFID. Our extensive portfolio includes RAIN RFID mobile computers, Fixed readers, antennas, and enhancement (sled) readers. Nordic ID solutions enable customers to manage their business processes by bringing transparency and predictability to processes and operations.

KEY POINTS:

- Future-proof Android Mobile Computers, UHF RFID, 1D/2D, NFC and Camera
- Reader Enhancements (Sleds and Wearables) for IOS and Android
- UHF RFID Fixed Readers with LINUX computers & customisable portal/gate solutions
- Single API support for integration of all Nordic ID Readers

[Shop Now](#)



Logical access control systems for manufacturing facilities. Trust the full range of rf IDEAS authentication solutions to deliver manufacturing cybersecurity, user efficiency and complete logical access control across operations.

KEY POINTS:

- Protect Data and Intellectual Property
- Focus on Accountability
- Ensure Regulatory and Safety Compliance

[Shop Now](#)



For over two decades, TSL®, part of HID, has delivered innovative data capture solutions to major companies all around the world using a global network of distributors and system integrators. Specialist in-house teams design all aspects of the finished products and software ecosystems, including electronics, firmware, application development tools, RF design and injection mould tooling.

KEY POINTS:

- Designed to read and write to EPC Class 1 Gen 2 and EPC Class 1 Gen 2V2 tags, high performance 2D data scanning to bring unparalleled data collection capabilities to any host it is connected to
- Using the latest generation of Impinj silicon, read rates have been boosted up to 1200 tags per second

[Shop Now](#)

RFID



From high performance enterprise designs, compact industrial models, lower-volume desktop, and mobile to print engine models, our RFID printer family is designed for diverse requirements.

KEY POINTS:

- Deep Collaboration with Multiple Standards Organizations
- Easily and Quickly Switch Between Different Label Constructions
- High Speed Encoding for Better Productivity

[Shop Now](#)



Unitech is a global provider of AIDC (automatic identification and data capture) and RFID technologies with over 40 years of experience. Unitech manufactures a wide range of Enterprise solutions such as mobile computers, rugged handheld PDAs, industrial tablets, RFID readers/writers, barcode scanners (1D/2D, DPM and ESD safe), embedded readers and software solutions.

KEY POINTS:

- Omni-channel solutions
- RFID handheld, pocket sized and snap-on gun grip accessory readers/writers
- RFID fixed and modules readers/writers
- RFID standard antenna, gate/port/shelve antenna and RFID tunnel reader/writers

[Shop Now](#)



Only Zebra provides end-to-end solution simplicity, with everything you need to implement RFID in your organization — from well-tested industry-leading infrastructure to the expertise you need to maximize the benefits of RFID in your enterprise.

KEY POINTS:

- Printers / Readers / Antennas
- Labels / Tags / Cards
- Over 300 RFID technology patents
- Mobile and Desktop options

[Shop Now](#)

ID CARD PRINTERS



Entrust data and compliance solutions protect and enable healthcare workers, administrators, and patients with strong identities, secure payments, and protected data.

KEY POINTS:

- The comprehensive solutions protect sensitive data through encryption, authentication, and digital certificates
- Entrust support the healthcare industry in managing and securing a workforce that operates both remotely and on-premises, safeguarding critical assets and sensitive information.

[Shop Now](#)



Explore our wide selection of FARGO® card printers that range from plug-and-play, entry-level offerings to more sophisticated printing solutions that offer more advanced features, versatile encoding and lamination options.

KEY POINTS:

- Simple.
- Reliable.
- Affordable.

[Shop Now](#)



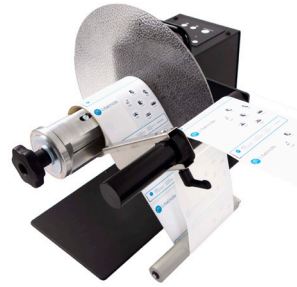
Zebra has a great line of pioneering id/card printers. This is well suited for the Healthcare industry to print out badges for healthcare workers that last long and are durable. Zebra have mastered fast and effortless card printing, making it easy to manage the printers and train staff to use it.

KEY POINTS:

- Multiple encoding and connectivity options
- Intuitive card feeder automatically adjusts for varying card thickness
- Easy set-up with painless plug-n-play deployment
- Varied choice of Single or dual-sided, edge-to-edge monochrome and color cards

[Shop Now](#)

ACCESSORIES



LABELMATE's mission is to make label printing processes easier, faster and more effective by developing smart and durable devices that support their operator before, during or after the printing or application process.

KEY POINTS:

- The most easy-to-use, heavy-duty, and reliable products of their kind, every LABELMATE Product is built to rugged industrial-quality standards.
- The product quality is reflected in the unmatched warranty program of 3 or 5 years Limited Warranty.

[Shop Now](#)

MOBILIS®



French manufacturer of protective & transport solutions for mobile computers & scanners, Mobilis has 30 experts in mobile working are constantly on hand, listening to your needs and how they develop over time. Mobilis has a large range of datacapture cases, payment terminal cases, screen protectors, holsters, and several accessories to protect and transport your devices.

KEY POINTS:

- DEDICATED PRODUCTS FOR EACH DEVICE : For any use and job, for any brand or model, there is a MOBILIS® solution !
- HIGH PROTECTION : dedicate for an intensive use on the field.
- ERGONOMIC SOLUTIONS : allow to make easy the job.

[Shop Now](#)



Newcastle Systems offers mobile workstations that improve productivity in various settings by providing flexibility and efficiency. Their ergonomic design and integrated power supply allow employees to access tools and technology anywhere, reducing downtime and streamlining workflows. These workstations are ideal for companies looking to optimize operations and empower their workforce.

KEY POINTS:

- Print on-demand and reduce costly
- Continuous full screen access to real-time information
- See your ROI in about 4-6 months
- Plug and play system / *24/7 operation

[Shop Now](#)

ACCESSORIES



PODLOC is an all-in-one solution for storing, securing, tracing, and charging mobile devices. It reduces device loss, saves space, and ensures devices are always charged. Convenient and upgradable, it offers fast ROI. It improves device availability and provides insights to quickly retrieve lost or damaged devices.

KEY POINTS:

- Support for multiple manufacturers including Honeywell, Datalogic, Zebra and more
- Secured assets & Less points of failure
- Lock charge and Manage
- Extendible and modular wall mounting options

[Shop Now](#)



We understand that your complete satisfaction is based on efficiency, quality and total solution support. This is why we offer a comprehensive selection of Genuine Supplies that will provide GUARANTEED performance through your TSC Auto ID & Printronix Auto ID Industrial, Desktop or Mobile printer.

KEY POINTS:

- Labels AND Thermal Transfer Ribbons for Industrial, Desktop and Mobile Printer Applications
- Receipt/Transaction Supplies for Mobile Printer Applications
- Specialty/Custom Labels, Tags and Tickets for any Application

[Shop Now](#)



Zebra Intelligent Cabinets, Racks, Cradle Locks, Customised Carts and Trolleys help ensure assets and workflows function in tandem at high performance and optimal security to accelerate business in warehouse, transportation & logistics, retail and healthcare operations.

KEY POINTS:

- Wide portfolio to meet varying customer application and environmental needs
- Customizable to hold numerous combinations of devices in various arrangements
- Stadium design available to hold more devices in the same footprint
- Modern open-leaf design

[Shop Now](#)

SOFTWARE



Entrust™ Instant ID software (formerly TruCredential) is a solution for creating, issuing, and managing secure ID cards and credentials, allowing organizations to meet a wide range of application requirements — from basic photo ID cards to high-assurance credentials.

KEY POINTS:

- Design ID cards anytime, anywhere with intuitive, drag-and-drop templates and workflows
- Create custom design, workflows, and unique user profiles.

[Shop Now](#)



Whether your ID card printing needs are simple or complex, HID provides Asure ID Software in a range of options. It's the perfect match for your FARGO® ID card printer!

KEY POINTS:

- User-friendly interface similar to the familiar Microsoft® ribbon
- Easily print cards from common databases

[Shop Now](#)

Honeywell



Honeywell Operational Intelligence is software that captures and analyzes data and converts it into actionable insights. In addition to providing data-driven insights, it enables automation that helps manage workflows and disruptions in real time.

KEY POINTS:

- Automatically manage the most common asset issues at the edge
- Enable business/process optimization
- React to issues in real-time and reduce business impact

[Shop Now](#)



TSC integrated print solutions provide enterprises, SMBs, and system integrators with a high level of management, flexibility, and actionable insight for TSC Printronix Auto ID printers.

KEY POINTS:

- Printer Management Made Easy. Quickly and remotely monitor printers, configure settings, deploy programs, and troubleshoot problems.

[Shop Now](#)

SOFTWARE



MoboLink is a mobile device and application management platform from Unitech that enables enterprise users to streamline the provisioning, monitoring and safeguard operations remotely on Unitech branded mobile PDAs.

KEY POINTS:

- Monitoring / Event Management / Application Management / Device Management / Backup Management
- Remote Control / Location Management / Historical Data
- StageGO Management / Android Enterprise

[Shop Now](#)



Zebra Workcloud Communication™

Zebra Workcloud Communication help workers solve problems on the spot. Put answers at their fingertips and co-workers and customers within their reach. Connect people, data and workflows for a smarter, more responsive operation.

KEY POINTS:

- Maximize worker safety with real-time emergency alerts and voice command
- Streamline and secure communication with reliable and approved messaging, voice, team broadcasting and more
- Optimize delivery times by alerting drivers to new priorities and rerouting drivers for speedier deliveries

The solutions above are only a selection of **more than 18 software brands** available at BlueStar. Talk to your account manager to know more about the other software solutions that allow you to manage your Warehouse projects.



Mobile Computer Software



Barcode Scanner Software

ADDITIONAL VERTICAL SOLUTIONS & INSIGHTS

RETAIL & HOSPITALITY SOLUTIONS
POWERED BY BLUESTAR

HEALTHCARE SOLUTIONS
POWERED BY BLUESTAR

VAR MED

MOBILITY SOLUTIONS
POWERED BY BLUESTAR

- TRANSPORT
- LOGISTICS
- FIELD SERVICE
- BLUE LIGHT

SELF-SERVICE SOLUTIONS
POWERED BY BLUESTAR

- OEM
- KIOSKS

DIGITAL SIGNAGE SOLUTIONS
POWERED BY BLUESTAR

ID & SECURITY SOLUTIONS
POWERED BY BLUESTAR

RFID SOLUTIONS
POWERED BY BLUESTAR



WANT TO KNOW
MORE ABOUT
BLUESTAR?

Contact us:
ask.blue@eu.bluestarinc.com

