



RETAIL & HOSPITALITY SOLUTIONS

POWERED BY BLUESTAR



LOCATIONS / EU

Our coordinates in Europe

BLUESTAR EUROPE DISTRIBUTION BV

Phone: +31 (0) 880 233 633
Email: ask.blue@eu.bluestarinc.com

BLUESTAR BENELUX

Phone: +31 (0) 880 233 633
Email: salesnl@eu.bluestarinc.com

BLUESTAR CZECH REPUBLIC & SLOVAKIA

Phone: +420 604 230 217
Email: salesee@eu.bluestarinc.com

BLUESTAR DENMARK

Phone: +45 8988 3663
Email: sales.dk@eu.bluestarinc.com

BLUESTAR FINLAND

Phone: +358 (0)10 321 2300
Email: sales.fi@eu.bluestarinc.com

BLUESTAR FRANCE

Phone: +33 4 7571 0850
Email: contact@eu.bluestarinc.com

BLUESTAR GERMANY, AUSTRIA AND SWITZERLAND

Phone: +49 7721 202630
Email: infode@eu.bluestarinc.com

BLUESTAR HUNGARY AND EASTERN EUROPE HQ

Phone: +36 1 808 8275
Email: salesee@eu.bluestarinc.com

BLUESTAR IRELAND

Phone: +353 862412654
Email: irlsales@eu.bluestarinc.com

BLUESTAR ITALY

Phone: +39 (0) 287368727
Email: info.it@eu.bluestarinc.com

BLUESTAR NORWAY

Phone: +47 22 83 84 00
Email: sales.no@eu.bluestarinc.com

BLUESTAR POLAND

Phone: +48 22 153 08 91
Email: msikora@eu.bluestarinc.com

BLUESTAR PORTUGAL

Phone: +351 214 721 640
Email: infoPT@eu.bluestarinc.com

BLUESTAR ROMANIA

Phone: +40 726 744 042
Email: salesee@eu.bluestarinc.com

BLUESTAR SPAIN

Phone: +34 902 119103
Email: info.es@eu.bluestarinc.com

BLUESTAR SWEDEN

Phone: +46 40 668 85 08
Email: sales.se@eu.bluestarinc.com

BLUESTAR UK

Phone: +44 (0)1785 218500
Email: uksales@eu.bluestarinc.com



BUSINESS. STRAIGHTFORWARD WITH BLUESTAR.

BlueStar is the leading global distributor of solutions-based Digital Identification, Mobility, Point-of-Sale, RFID, Digital Signage, Network Infrastructure, and Security technology. BlueStar works exclusively with value-added resellers, integrators and ISV's, providing them with complete solutions, business development and marketing support.

BlueStar provides many extended services to our customers to make them more agile, more capable, and more profitable. Our differentiator is that we work as a partner alongside your operation. We are a flexible, no nonsense organization with dedicated sales/technical teams and great financial strengths and benefits.

WE WORK AS A **PARTNER**
 ALONGSIDE YOUR OPERATION.
 WE ARE A FLEXIBLE, NO NONSENSE
 ORGANIZATION WITH DEDICATED SALES/
 TECHNICAL TEAMS COUPLED WITH **GREAT**
FINANCIAL STRENGTHS AND BENEFITS.

WHY IS BLUESTAR DIFFERENT?



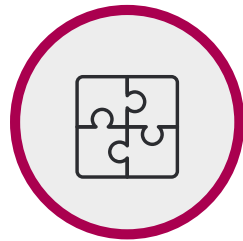
APPROACH

- Solutions based distribution
- Understanding of market place and products
- Local sales team



LARGE PRODUCT SELECTION

- Multi-manufacturer portfolio
- Flexibility of choice
- Best of breed to fit your needs
- Complete solution offering



CUSTOM CONFIGURATION

- Single code ordering
- Different packaging options
- Shipment branding
- Personalized packaging



TECHNICAL SUPPORT

- Experienced, qualified professionals
- Pre-sales & post-sale support
- Multi-lingual support lines
- Returns & repairs management
- Local support



STOCK, PRICING & ORDERING

- Dedicated web shop
- FTP feeds for stock quantities
- CSV document for pricing
- EDI - Electronic Data Interchange
- Complete solution offering



STOCK OPTIONS

- Dedicated stock holding
- Bonded stock options
- Demo pool availability
- Fulfillment & 3PL services



SHIPPING OPTIONS

- Choice of delivery method
- Customer logo on delivery note
- Custom Packaging options
- Dated Deliveries



TECHNICAL SERVICES

- Pre-configurations
- Installation services
- BlueStar Managed Services
- Warranties and service plans



SOLUTIONS FOR YOU

1. You are a Payment Provider or an POS ISV looking to supply POS hardware to create a one-stop-shop.



BlueStar becomes a fulfillment and 3PL (third party logistics) for you as we would stock your payment device and accessories. Together we create a custom made hardware bundle in cooperation with our wide array of POS manufactures.

BlueStar's value-added services are available for you to brand, customize or stage your hardware package before transport. BlueStar partners up with leading logistical companies to provide the best and fastest shipping possible at competitive rates across EMEA.

A merchant's ability to take payments is critical, therefore we created a flexible overnight RMA service so your merchant will always be able to continue receiving payments.

With this set-up you have created a one-stop-shop for your customers/merchants without having the trouble of dealing with warehousing and logistical services. BlueStar is a single point of contact to take care of all your fulfillment needs.

KEY PRODUCTS SUPPLIED:

- Payment Device & PED Stand
- iPad & Tablet / Tablet Stand
- Receipt Printer & Paper Rolls
- Cash Drawer
- Barcode scanner
- Label Printer & Labels
- Touch Screen
- KDS (Kitchen Display System)

2. You are a traditional Windows ePOS ISV looking to supply hardware to your resellers and end customers.

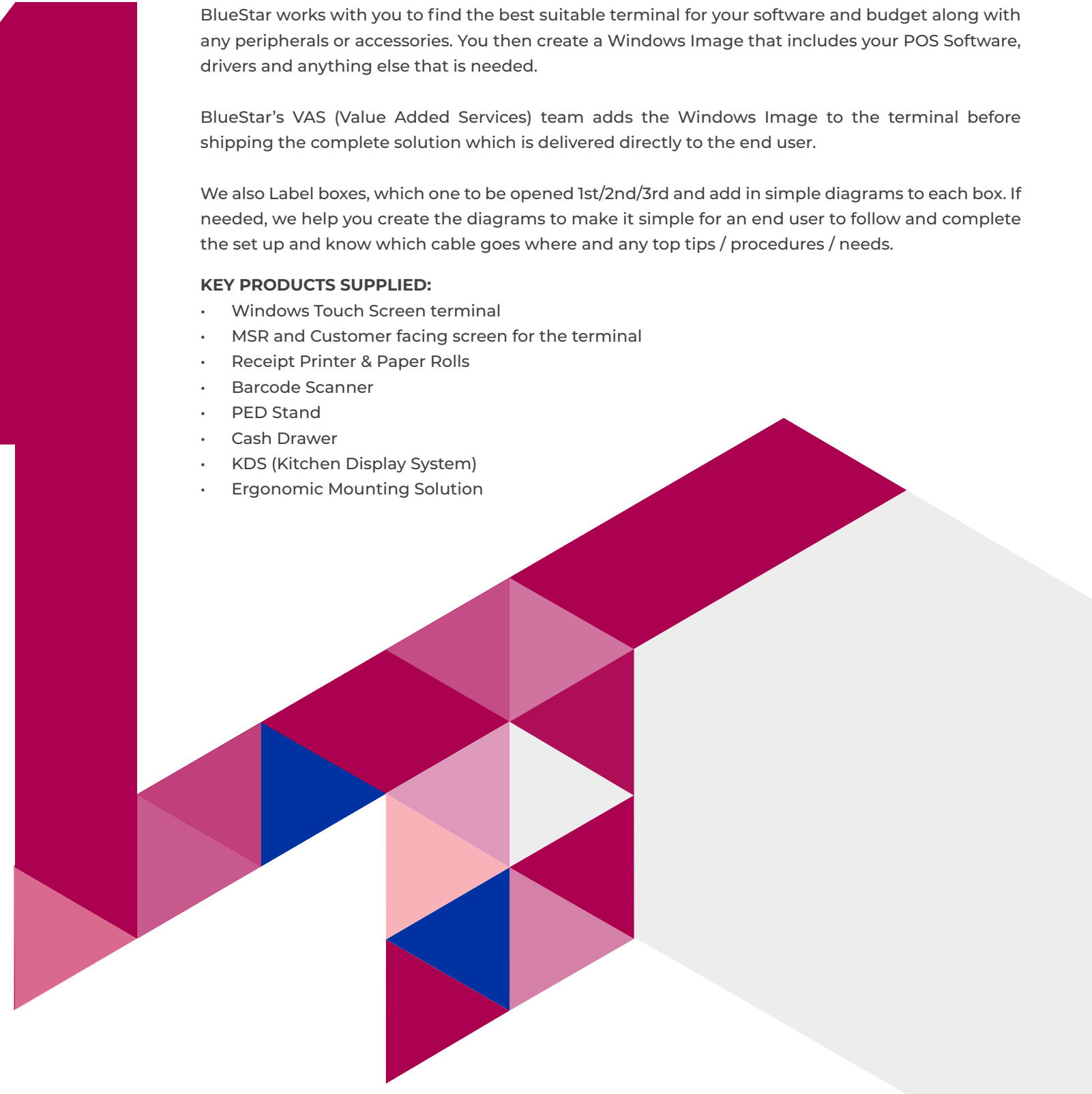
BlueStar works with you to find the best suitable terminal for your software and budget along with any peripherals or accessories. You then create a Windows Image that includes your POS Software, drivers and anything else that is needed.

BlueStar's VAS (Value Added Services) team adds the Windows Image to the terminal before shipping the complete solution which is delivered directly to the end user.

We also Label boxes, which one to be opened 1st/2nd/3rd and add in simple diagrams to each box. If needed, we help you create the diagrams to make it simple for an end user to follow and complete the set up and know which cable goes where and any top tips / procedures / needs.

KEY PRODUCTS SUPPLIED:

- Windows Touch Screen terminal
- MSR and Customer facing screen for the terminal
- Receipt Printer & Paper Rolls
- Barcode Scanner
- PED Stand
- Cash Drawer
- KDS (Kitchen Display System)
- Ergonomic Mounting Solution



RETAIL SOLUTIONS

There is a great need to assist the Retail industry with specialty electronics such as POS systems, barcode scanners, and so much more to help efficiently operate business. It can be challenging to connect with customers, but with the help of contactless and mobile technology solutions, retailers are able to strengthen and kindle their relationships.

59%

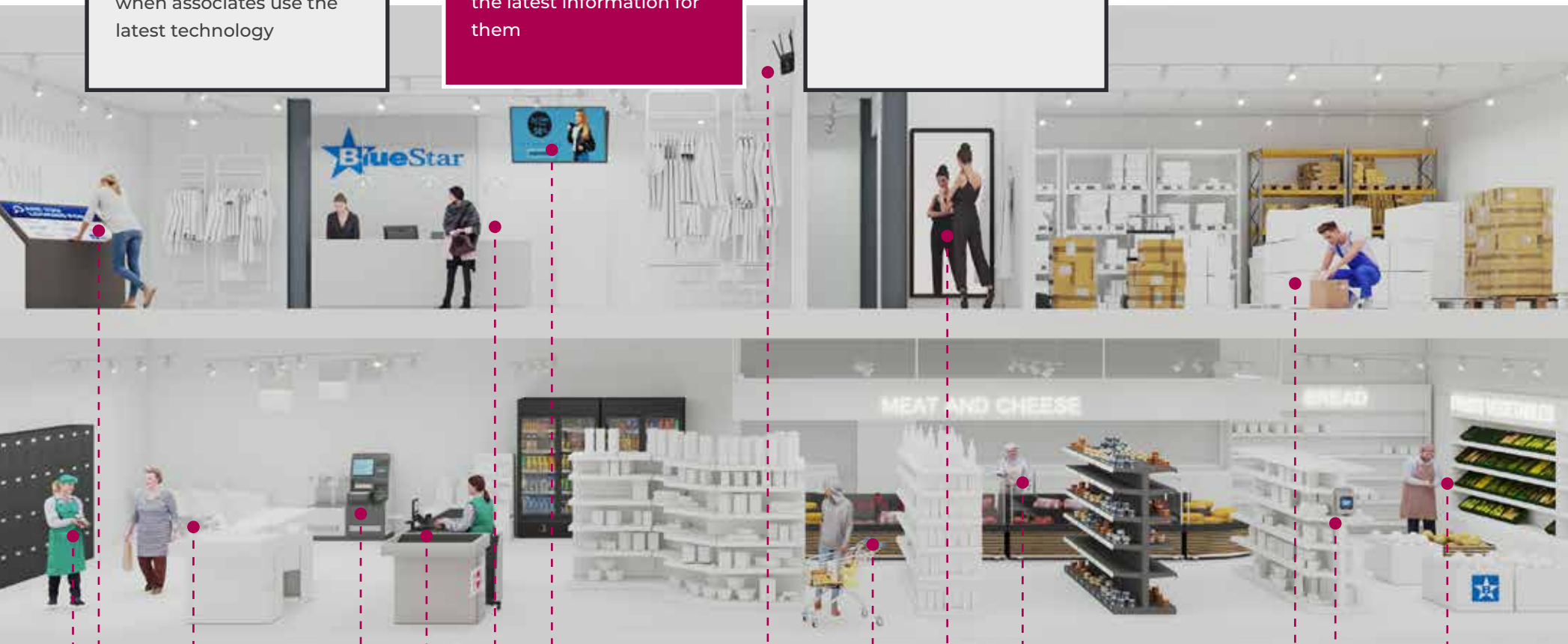
have better experiences when associates use the latest technology

57%

prefer sales associates find the latest information for them

52%

prefer self-checkout



- POS Solutions
- Self-Check Out
- Interactive Digital Signage
- mPOS Solutions
- Customer Loyalty
- Mounting & Ergonomic Solutions
- RFID Solutions
- Digital Signage
- Self-Scan Solutions
- Smart Mirror
- Fresh Food Labeling
- Labeling
- Mobile & Handheld
- Price Checking, I/D/S

EPOS SET UP

- 1 x NCR CX5 Touch Screen Terminal & stand
- 1 x NCR 10" customer facing display
- 1 x EPSON TM-T88 receipt Printer
- 1 x APG E3000 Cash Drawer
- 1 x Honeywell Genesis 2D Barcode Scanner (Optional)
- 1 x Ergonomic Solutions Payment Stand
- 1 x Box of paper rolls and cables

Just add software and your good to go. Speak to your Bluestar representative for options.

SCAN & LEARN SOLUTION

- 1 x Brightsign XT1144 Extended Player
- 1 x BrightSign BA Connected Software
- 1 x Elo Touch screen 10-65"
- 1 x Elo Integrated barcode scanner

Everything you need to create a simple interactive barcode scan and learn set up. Simple table mount or even shelf mount options available. Great marketing potential at your fingers tips.

RFID IN RETAIL SET UP

- 1 x Keonn Custom Retail Package to cover, Inventory and Tracking, Point of Sale and Interactive Retail
- 1 x Zebra RFID Custom hardware solution pack for Keonn Package
- 1 x Tag Solution kit

Everything you need to cover hardware and software for RFID retail solutions that can still grow with other solutions on the same system.

QUEUE BUSTING SOLUTION

- 5 x Zebra TC5X Hand held terminal
- 5 x Ergonomic Solutions M-Case Payment device / Hand held terminal pairing Sled.
- 5 x Zebra ZQ600 Mobile receipt Printers

Just add the Payment device and you have a very mobile and quick running hardware solution.

HOSPITALITY SOLUTIONS

From the omni-channel to curbside pickup, hospitality environments have opened up a door to a brand-new room of opportunity for hoteliers and other hospitality-providers. It's important to ensure that all technology solution offerings are seamless, appropriate, effective, to intuitive, keeping the best interests of the customer in mind.

82%

believe that contactless payments are a much cleaner way to pay

81%

of travelers want greater digital customer experience

37%

of guests would be more likely to choose a hotel lobby with self check-in kiosks over ones without.



MPOS SET UP

- 1 x Star MCP3 Receipt Printer
- 1 x APG ECD330 Cash drawer
- 1 x BoxApos Universal Stand / Printer Cover
- 1 x SUMUP payment reader and Stand
- 1 x Box of paper rolls
- 1 x Barcode scanner (Optional)
- 1 x iPad (Optional)

Everything you need to create a "Till Point". Just add other Software to enhance. Speak to your Bluestar representative for options.

TABLE ORDERING KIT

- 5 x SUNMI V2 Hand held terminals
- 1 x Star SP742 Kitchen printer with HI-X Int
- 1 x Star TSP654II Bar Printer with HI-X Int
- 1 x SUNMI T2 Lite 15" touch Screen terminal

Allowing orders to be "live" and printed in the Kitchen or bar before the server leaves the table. Touch Screen terminal for table planning and to complete transactions.

FRESH FOOD / DELIVERY LABELING

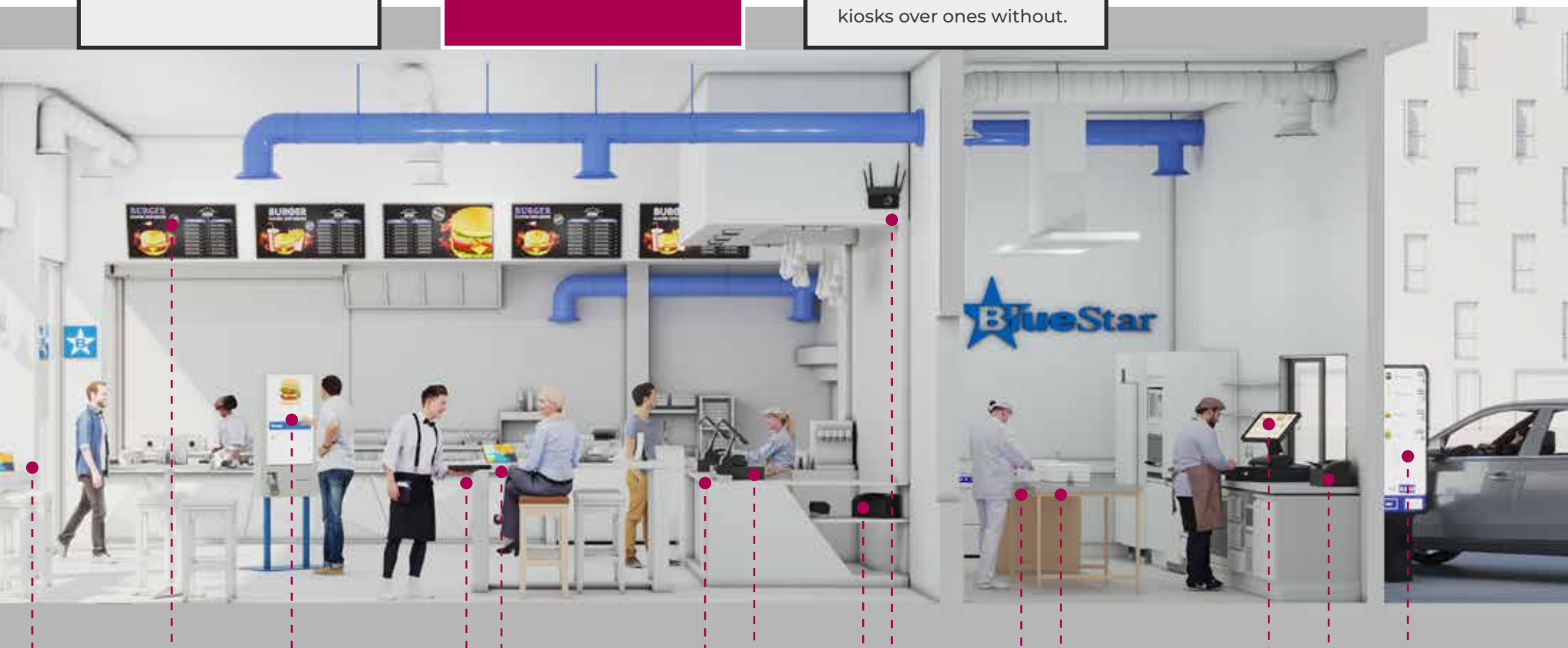
- 1 x 15" Touch Screen terminal
- 1 x USB 4" adjustable label printer
- 1 x Barcode scanner
- 1 x Barcode creation software
- 1 x Box of Labels 2"3" or 4"

Everything you need to design/print/scan labels, From 2" to 4" options. (Up to 8" possible.) Standard Labels, Re-Stick Labels, Continuous Labels, Full Colour, choices are endless.

SELF ORDERING SOLUTIONS

- 1 x Elo I-Series 15" or 22" Touch Screen terminal running Android or Windows
- 1 x Elo Wallaby Self Service Floor Stand
- 1 x Star TSP143III Receipt Printer
- 1 x Ergonomic Solutions Payment mount and plate for required PED

Everything you need for instore ordering. Add Star HI-X printers for instant printing of orders in the kitchen and bar.



Digital Menu Boards

Interactive Digital Signage

mPOS Payment & Ergonomic Solutions

POS Systems

Cloud Printing

Food Delivery Labeling

Food Allergen Labeling

Self-Ordering

Kitchen Order

Kitchen Display Systems (KDS)

Self-Ordering

Server Handheld Solutions

Customer Loyalty & Reward

TOUCH SCREEN & TOUCH SCREEN TERMINALS



CUSTOM

The touch screen terminals realized by Custom guarantee the highest level of innovation, reliability and performance, having been developed to answer to the most demanding needs of the Retail market. These solutions use the most advanced software applications and guarantee to the point of sale the best combination of technology and design.

KEY POINTS:

- Available versions for different operating systems
- Display and customer monitor available in different sizes
- All-in-one solutions
- PosA Android App available

[Learn More](#)



elo

Elo product portfolio includes a broad selection of interactive touchscreen displays from 10-65 inches, all-in-one touchscreen computers, open-frame kiosk touchscreens and desktop touchscreen monitors.

KEY POINTS:

- Choice of size and form factor
- Android or Windows platform
- Edge Connect accessories expand use
- Optional stands and mounts

[Learn More](#)



GVISION

GVision desktop display is supporting 1080p FHD point of sale (POS) touchscreen monitor which display 10" up to 22" performs 10-points multi-touch of projected capacitive PCAP screen.

KEY POINTS:

- Size: 10" to 22"; Resolution: 1920 x 1080, 1280 x 1024, 1024 x 768
- Aspect Ratio: 16:9, 5:4, 4:3
- Zero Bezel Touchscreen / PCAP 10-Points Touch
- Metal Housing

[Learn More](#)



NCR has been shaping the future of how people everywhere eat, travel, bank, and shop, since 1884. From point-of-sale terminals, scanners, peripherals, and printers, NCR have something for every business – no matter how large or small.

KEY POINTS:

- Touchscreen Computers
- Touch Screens
- Complete Solutions
- From Hand held to Kiosk

[Learn More](#)



SUNMI

Sunmi is leading the move to Android for business. Performance and Customer experience are at the heart of Sunmi's touchscreen terminal products. Ensuring high level of quality and design, Sunmi provides a full range of single and dual screen digital POS and touch computers.

KEY POINTS:

- High performance Qualcomm platform
- Leveraging the full Android ecosystem
- Ergonomics with industrial grade touchscreens
- VESA interface for easy mount

[Learn More](#)

TABLETS



Since Apple created the iPad its strength in MPOS has grown considerably. Apple developers are keen to supply a complete solution with iPad/Printer/Cash Drawer/Barcode Scanner/Tablet Stand.

KEY POINTS:

- 9.7" and Minis stocked
- Ideal for a complete solution supply
- Many Tablet stands available from BlueStar
- Not Sold separately

[Learn More](#)

Honeywell



Keeping workers and managers connected and providing them with the data and functionality they need, when they need it, is crucial to every business. With its 10.1-inch bright, high-resolution, optically bonded display and a light yet durable form factor, the Honeywell RT10A rugged tablet is easy to use all day long, making it perfect for rapid user adoption.

KEY POINTS:

- Easily capture barcodes from across the room
- With its rugged drop specification and IP65 rating, the RT10A is built to last
- The swappable battery packs can save you the hours of downtime
- Built on Honeywell's Mobility Edge™: platform, which helps future-proof your investment through Android™: 12 and beyond

[Learn More](#)

SUNMI



Sunmi M2 Max is a flexible and rugged tablet designed for professional use in retail, food service, hospitality, warehousing and manufacturing industries. M2 Max provides superior efficiency and durability in any environment with a high-powered platform.

KEY POINTS:

- 10.1" on Android 9.0
- High-capacity battery
- Operate with glove/wet touch sensing
- Protect from drop and water/dust ingress

[Learn More](#)

unitech



Unitech is a global provider of AIDC (automatic identification and data capture) and RFID technologies with over 40 years of experience. Unitech manufactures a wide range of Enterprise solutions such as mobile computers, rugged handheld PDAs, industrial tablets, RFID readers/writers, barcode scanners (1D/2D, DPM and ESD safe), embedded readers and software solutions.

KEY POINTS:

- Windows 10.1" tablet
- Android 8" tablet
- Rugged and designed for multiple purposes
- Large range of accessories such as: desktop cradle, snap-on readers, mobile printers, and more.

[Learn More](#)

ZEBRA



When you're out to set a higher standard, you need a tablet that's not only rugged, but also smart, and tailored to your way of working. One that doesn't force you to adjust your process or goals to accommodate the limits of its own abilities.

KEY POINTS:

- 8", 10" and 12" Windows / Android Models
- Rugged and designed for Retail and Hospitality
- Choice of Accessories from Zebra
- Xplore tablets also available

[Learn More](#)

RECEIPT PRINTERS

CITIZEN



Citizen Systems Europe produces a comprehensive range of printing solutions and designs its machines to meet the specific needs of each application. The range includes tough, contamination-resistant label printers for industrial environments and compact desktop and portable POS units for retail.

KEY POINTS:

- Receipt / Ticket / Label Printers
- Direct Thermal & Thermal Transfer
- Multi Interface
- Desk Top / Kiosk

[Learn More](#)

CUSTOM



The POS receipt printers manufactured by Custom are the perfect answer for those looking for high performances with a design studied to save space. The quality of the POS printers guarantees an unavoidable duo: excellent print quality, even in graphics, combined with speed and reliability.

KEY POINTS:

- Receipt / invoice / order / ticket / label printers
- Single or Multi interface
- Complete software suite available
- Rugged and compact design

[Learn More](#)

A Global Manufacturer of Printers, Best-selling POS receipt printers lead the industry in easy-to-use features, fast printing speeds and superior reliability. A Wide range ensures printers for all areas. Great EPOS and MPOS connectivity along with Japanese reliability.

KEY POINTS:

- Receipt / Ticket / Inkjet / mobile Printers / Customer Displays.
- Direct Thermal / Dot Matrix / Inkjet Technology
- Single or Multi Interface
- Mobile / Desk Top Printers

[Learn More](#)



Honeywell



Honeywell RP Series mobile printers offer the most rugged and reliable performance for route accounting, direct store delivery, citation printing, car rental return receipts and field service workers. This tough competitor withstands drops and exposure to dust and water, and is designed for all-day printing with a full-shift battery life.

KEY POINTS:

- Rugged Mobile Printers
- Receipt / Label / Ticket
- Designed for all-day printing
- A Broad Range of Accessories

[Learn More](#)



A global manufacturer of POS hardware, Star Micronics has been supporting retailers for over 30 years to deliver efficient, reliable store solutions. At the forefront of product innovation, Star offers the largest range of POS, mPOS and Tablet POS printers currently available with a range of connectivity choices to suit any retail environment.

KEY POINTS:

- Receipt / Ticket / Label Printers
- Direct Thermal or Dot Matrix
- Single or Multi Interface
- Mobile / Desk Top / Kiosk

[Learn More](#)



Increase your employees' productivity, precision and accuracy. Equip them with wireless mobile printers that are tailored to how they work and the job they do. Printers range from those ideal for occasional use, to rugged machines, featuring a wide range of the latest connectivity options, and robust functionality, keeping you operational even in difficult situations.

KEY POINTS:

- Receipt / Ticket / Label
- Rugged and designed for Retail and Hospitality
- Choice of Accessories from Zebra
- 2" to 4"

[Learn More](#)

BARCODE SCANNERS/ HANDHELD TERMINALS

CUSTOM



Custom's barcode readers and data acquisition systems optimize front and back-end communication for Retail, Manufacturing and Transportation&Logistics sectors. Choosing Custom means tapping into a wealth of experience of almost 30 years in many different sectors, embracing a range of vertical hardware and software solutions as part of a unique service structure.

KEY POINTS:

- Handheld barcode scanners 1D/2D, corded/cordless, multi-interface
- Desktop barcode scanner 1D/2D, multi-interface
- Mobile computers Android, PDA/PDT, 1D/2D
- Wide range of accessories available

[Learn More](#)

DATALOGIC

EMPOWER YOUR VISION



Datalogic offers innovative solutions for a full range of applications in the Retail, Transportation & Logistics, Manufacturing and Healthcare industries. Datalogic products are used in over a third of the world's supermarkets and points of sale, airports, shipping and postal services.

KEY POINTS:

- Wireless and contactless charging technology
- Handheld barcode scanners 1D/2D, corded /cordless, multi-interface
- Desktop barcode scanners 1D/2D, multi-interface, in/on-counter
- Mobile computers Windows/Android, PDA/PDT, 1D/2D

[Learn More](#)

elo



From food service and retail to entertainment, the Elo M50 handheld computer is designed to meet the demands of continuous everyday use.

KEY POINTS:

- Versatile handheld Android computer
- Enhance customer satisfaction and increase efficiency
- Expedite service with the built-in NFC by seamlessly accepting commuter and loyalty cards loaded with payment.

[Learn More](#)

Honeywell



Honeywell Safety and Productivity Solutions (SPS) provides products, software and connected solutions that improve productivity, workplace safety and asset performance for our customers across the globe.

KEY POINTS:

- Handheld barcode scanners 1D/2D, corded/cordless, multi-interface
- Desktop barcode scanners 1D/2D, multi-interface
- Mobile computers Windows/Android, PDA/PDT, 1D/2D
- Tablets with Mobile computers
- Label printers Desktop/Mobile

[Learn More](#)

nordic id



We have been Europe's leading provider for item track and trace solutions for over 30 years, serving customers worldwide. Our Nordic origins underpin everything we do. It means we listen to our customers. We understand our customers' quest to have just the right amount of inventory, to manage their routine operations with ease, speed and efficiency. In short, be more efficient, productive and sustainable.

KEY POINTS:

- Android Mobile Computers 1D/2D, UHF RFID, NFC & Camera
- Android Ruggedised Mobile Computers 1D/2D, UHF RFID, NFC & Camera
- Reader Enhancements (Sleds) for IOS & Android, 1D/2D & UHF RFID
- Manufactured in Finland, following the Nordic tradition of high-quality

[Learn More](#)

SUNMI



Sunmi offers a wide range of handheld terminals and scanners with or without integrated printer, designed for a variety of use case requiring mobility, business application and data capture. With a wide range of form factors, there's always a Sunmi mobile device meeting your needs.

KEY POINTS:

- Full Android ecosystem
- Multiple options: NFC, RFID, Ticket/Label mobile printers
- Handheld & Desktop barcode scanners 1D/2D, multi-interface
- Sunmi end-to-end Cloud Device Management platform

[Learn More](#)

Socket Mobile offers a range of handheld Bluetooth barcode scanners for mPOS, covering all areas from retail to ticketing to rugged - the number one choice for all iOS developers. Featuring lightweight, ergonomic structures, and a long-lasting battery to withstand entire work days. Socket Mobile products are ideal for retail POS, field service, inventory management, asset tracking and more.

KEY POINTS:

- Cordless Bluetooth barcode scanners 1D and 2D
- Handheld or hands-free in Charging Stand
- Rugged dependability options
- Color options

[Learn More](#)



Unitech is a global provider of AIDC (automatic identification and data capture) and RFID technologies with over 40 years of experience. Unitech manufactures a wide range of Enterprise solutions such as mobile computers, rugged handheld PDAs, industrial tablets, RFID readers/writers, barcode scanners (1D/2D, DPM and ESD safe), embedded readers and software solutions.

KEY POINTS:

- Handheld (corded/cordless) barcode scanners 1D, 2D, 2D Long Range, DPM, ESD, multi-interface
- Desktop barcode scanners 1D, 2D
- Embedded kiosk/self-service readers 1D, 2D, RFID
- Mobile (PDA/HHT and wearable) 1D, 2D, 2D Long Range, RFID

[Learn More](#)



Zebra empowers those on the front line in retail, healthcare, transportation and logistics, manufacturing and other industries to achieve a performance edge - an edge that translates to delighted customers, good patient outcomes and superior business results.

KEY POINTS:

- Handheld barcode scanners 1D/2D, corded/cordless, multi-interface
- Desktop barcode scanners 1D/2D, multi-interface
- Mobile computers Windows/Android, PDA/PDT, 1D/2D

[Learn More](#)



SELF-SERVICE

The Elo Wallaby™ line of self-service stands can streamline an installation of interactive experiences in high-traffic public environments. Create a unified approach to any customer experience in point of sale and self-service applications including self-order, endless aisle, price verification, loyalty programs, brand experience and more.

KEY POINTS:

- 15.6" and 22" touch screen versions
- Touchscreen Computers, Android or Windows
- Desk or Floor Standing
- Range of Accessories

[Learn More](#)



NCR has been shaping the future of how people everywhere eat, travel, bank, and shop, since 1884. With the huge growth in Self-Service NCR have a wide range to help in this area grow. The same terminals can be used for Online In store purchases, click and collect.

KEY POINTS:

- Desk or Floor Standing
- Range of Accessories
- Complete Solutions
- Software and Cash Vending options

[Learn More](#)



With the Nordic ID RFID Self-checkout, you can enhance the in-store customer experience and sell more! The Nordic ID Self-checkout can help you increase sales opportunity and provide an effective solution for managing the flow of products.

KEY POINTS:

- Integrates easily to any POS payment system.
- Can be branded and integrated into existing store design
- Scan entire shopping bag in an instant
- Easy and quick to use

[Learn More](#)





SUNMI

When automated customer experience grows at fast pace, Sunmi K2 Android Kiosk opens new opportunities making the self-service experience remarkably simple and affordable. With a full set of high quality peripherals, K2 product family offer variety of implementation for multiple use cases.

KEY POINTS:

- Floor standing or wall mounted
- Leveraging Android ecosystem
- 24" screen with G+G multitouch
- Modular peripherals: barcodes, printers, card readers...

[Learn More](#)



With Zebra's CC600 and CC6000 self-service kiosks, you can give every shopper the concierge-style service of their dreams. These interactive kiosks give customers the best of online and in-store shopping, with all the self-service capabilities they expect—and much more.

KEY POINTS:

- State-of-the-Art Voice and Video Technology
- Android for Instant Familiarity
- Integrated Barcode Scanner
- NFC for instant pairing

[Learn More](#)

STANDS/MOUNTS



BOXaPOS is a new player. Founded in 2019 the company fills a gap in the mPOS market. The stands have original functionality combined with high quality at very realistic pricing. Basically, it takes mPOP hardware (Android, iPad and Windows) to a next level.

KEY POINTS:

- Aggressive pricing & premium quality
- Compact minimal design, integrated wiring in bezel-less frame
- Optional housing for a large number of printers.
- Customer facing option

[Learn More](#)



ENS Group are the leading global designer and manufacturer of mounting solutions which optimise technology use in the Retail, Hospitality and Warehouse industries. Developed in partnership with major manufacturers, ENS solutions are made using best-in-class materials and are designed to enhance the experiences of both our partners and their end users.

KEY POINTS:

- New Generation of Modular Mounting for POS solutions.
- Keep customers, staff and technology safe with UV Clean.
- Rugged, durable mounting for warehouse, retail and hospitality.
- Customisable modular self check-out and kiosk solutions.
- Fixed and mobile payment terminal solutions for all major devices.

[Learn More](#)



Ergonomic Solutions is an established, leading global supplier of innovative and ergonomically designed technology mounting and mobility solutions including: POS stands, mounts and enclosures for point of sale, payment and tablet technology optimised for iPad.

KEY POINTS:

- POS Stands and Mounts, Inc Printer, Payment Device, Scanner
- Various Tablet Stands and Enclosures for iPads & Other Devices
- Pair PDAs, smartphones or tablets with a range of payment devices
- Custom Mounts available

[Learn More](#)



Since 2012, Heckler's commercial iPad stands and mounts have been the gold-standard in the mPOS industry. Designed and manufactured in Phoenix, Arizona to the highest quality of standards, Heckler stands and mounts offer enhanced security without compromising functionality. Heckler stands and mounts keep cameras, buttons, and ports accessible while complementing the esthetics of your point of sale.

KEY POINTS:

- Authentic, minimalist design
- High-quality, heavy steel construction
- Secure wall mounts, stands, and consoles for iPad
- Custom design and branding available

[Learn More](#)

POS/PC BOX

elo



The EloPOS Pack delivers a powerful enterprise-ready compute platform in a sleek, compact form factor. With versatile connectivity options, plug in anything from Elo's latest monitor via single cable USB-C to a legacy printer requiring a 12V powered-USB. The system provides flexibility to make upgrades as your business requirements change.

KEY POINTS:

- Choice of processors, Ram, Hard Drive
- Choice of ELO Touch Touchscreens
- Windows / Linux / Android
- Small Footprint / Securely Mountable

[Learn More](#)



NCR has been shaping the future of how people everywhere eat, travel, bank, and shop, since 1884. With a dedicated range designed for the POS environment you will find the perfect choice with NCR POS/PC Boxes. Designed and built with years of experience.

KEY POINTS:

- Dedicated to Retail / Hospitality
- POS / PC Boxes
- Range of Processors, Ram, HD, Shapes and sizes.
- Range of Peripherals and Accessories.

[Learn More](#)

ALL-IN-ONE SOLUTIONS

elo



Elo PayPoint Plus is an all-in-one POS solution that brings unmatched style to the point of sale with a distinctive modern aesthetic.

KEY POINTS:

- Android and Windows versions
- Receipt Printer / Cash Drawer / Barcode Scanner / Mag reader
- Flip-for-customer touchscreen
- Great Style and Design

[Learn More](#)

CUSTOM



The all-in-one solution created by Custom can boast superior performance together with a compact and stylish design. The extreme compactness, the advanced technologies and the stunning aesthetic make it the ideal solution for Retail applications.

KEY POINTS:

- Available versions for different operating systems
- Ultra-compact and unique design
- Embedded thermal printer
- Vertically mounted display

[Learn More](#)

star



With outstanding connectivity and design plus intuitive functionality and simple integration, Star's mPOP combined Bluetooth printer and cash drawer delivers an advanced POS solution ready to work with your chosen mobile software and card payment system.

KEY POINTS:

- Android / Windows / iOS Compatible
- Receipt Printer / Cash Drawer combination
- Bluetooth Connectivity
- Optional tablet stand, customer display, buzzer and a range of compatible scanner options.

[Learn More](#)

SUNMI



From classic to compact form factors, Sunmi's all-in-one solutions provide high performance and improve customer experiences. With integrated printer and multiple peripherals connections, Sunmi all-in-one will be at the heart of your POS system.

KEY POINTS:

- High performance Android platform
- Display and customer screen available in different sizes
- High speed integrated printer with auto-cuter
- Full connectivity for POS systems

[Learn More](#)

KITCHEN SOLUTIONS

elo



Elo provides a full range of standard and custom kitchen automation products suited for use in food service. They help create streamlined processes between all parts of the restaurant. Elo products are purpose built for commercial use to help increase efficiency and reduce bottlenecks. The reliability and durability of the products keeps the technology protected and helps restaurant operations move forward smoothly for years to come.

KEY POINTS:

- From 10"-22"
- Touchscreen monitor, open frame and with integrated computer
- Available with Android or Windows

[Learn More](#)



Rugged technology mounting solution for high traffic hospitality environments, the WL-1000 series is durable and versatile and is constructed with the latest high-performance materials. The ideal solution for mounting screens, tablets, scanners and printers.

KEY POINTS:

- Built using the latest Engineered Materials for superior durability.
- Fits any Amps or VESA standard device weighing up to 10lbs
- Push-button macro adjustments for easy installation and device positioning
- Universal Clamp and back-to-back arm mounting

[Learn More](#)



Ergonomic Solutions is an established, leading global supplier of innovative and ergonomically designed technology.

KEY POINTS:

- Space saving solutions
- Ergonomics important / correct height for baristas/server
- Lots of liquid and food so easy to clean

[Learn More](#)

GVISION



GVision open frame/rear mount 10-points PCAP touch supports multiple inputs. Unit built for system builders who require a rugged and durable touch screen solution that can easily be integrated into any embedded application. Perfect solution for a kitchen environment space.

KEY POINTS:

- Size: 10" to 22"; Resolution: 1920 x 1080, 1280 x 1024, 1024 x 768
- Aspect Ratio: 16:9, 5:4, 4:3
- Projected Capacitive (PCAP) 10-Points Touch
- Zero Pressure Touch Activation

[Learn More](#)



Explore the Logic Controls KitchenGo Hardware and Software Lineup. Choose from a Range of KDS Solutions for Any Application. The kitchen display system (KDS) you select has a significant impact on the way your kitchen, and business operates. Our portfolio covers the entire range of configurations any restaurant would need - from budget-friendly solutions to premium enterprise functionality.

KEY POINTS:

- Reduce waste
- Streamline orders, Customize your back-end operations
- Identify bottlenecks with kitchen analytics
- Greatly improve customer experience

[Learn More](#)

PAYMENT SOLUTIONS



ENS Group is the global leader in Payment Terminal Mounting and has been delivering industry leading payment solutions into top global businesses for 20+ years. We offer an expansive portfolio of off-the-shelf and custom solutions, delivering the ideal product for even the most challenging environments.

KEY POINTS:

- FlexiPole fixed payment terminal stands (quick release, locking, tethered) - easily upgraded, available for all main payment devices.
- MPOS Pairing Sleds for seamless communication and functionality.
- Protect and Charge solutions for added protection and seamless slide-in charging.
- Other accessories and UV Clean attachments also available.

[Learn More](#)



Whatever type of payment terminal you use, Ergonomic Solutions has secure card reader stands and mounting solutions for all static and mobile payment solutions, to provide faster customer service at payment points anywhere.

KEY POINTS:

- Payment device mounts & adapters – static, contactless and mobile
- Pole mount options: cable management / tilt and rotation
- Prevent damage to hardware and cables
- Protect from theft and tampering: Security tethers and locks

[Learn More](#)

SUNMI



Sunmi's payment devices are first and foremost a range of products fully certified internationally by payment partners. Supporting a powerful platform for commercial Android applications, the devices support all classic EMV payment methods and emerging methods (QR code, facial recognition, BLE).

KEY POINTS:

- Simplified integration of payment solution
- Secured OS with full Android compatibility
- Multiple form factors with or without integrated printer
- Optional barcode scanners 1D/2D

[Learn More](#)

INTERACTIVE DIGITAL SIGNAGE



BrightSign®

BrightSign is a global market leader of media players that are built specifically for digital signage with a commercial grade OS that delivers a cloud-connected experience for real time player access anytime, anywhere. Our solid-state players deliver unmatched reliability, exceptional video quality and sophisticated functionality without the PC hassles.

KEY POINTS:

- Delivers quality experiences you can rely on
- Offers models to match your application
- Provides stellar video and HTML performance
- Includes a free BSN.cloud subscription

[Learn More](#)

elo



Our commercial-grade interactive digital signage displays are designed to captivate your audience acting as an interactive billboard. From an interactive digital display to a touch screen kiosk, Elo interactive touch screen solutions create high-impact experiences.

KEY POINTS:

- 10" to 65" touch screens with or without PC
- Android / Linux / Windows
- Range of Accessories, Barcode, Camera, NFC/RFID etc.
- Flexible mounting - wall, shelf, desk and floor stands

[Learn More](#)

Gvision



Gvision's interactive digital signage and stretch displays create unique advertising and infotainment opportunities for corporate, commercial and retail verticals. Including 4K UHD 10-points PCAP touch displays, 28" and 37" Stretched displays and 16" Smart Shelf as just part of our Gvision Offering allowing you to create amazing alternative Digital Signage.

KEY POINTS:

- Range of Screen Sizes and Shapes available
- 4K from 32" to 65"
- Smart Shelf and Stretched Displays.
- Video Walls and Security Screens

[Learn More](#)

RFID



Datalogic offers a wide range of UHF RFID devices and solutions that can be used to speed up and streamline different applications in the retail industry.

KEY POINTS:

- POS Desktop readers for an easy and fast checkout
- Bluetooth pocket readers for store inventory
- Portal readers for instore and warehouse inventory
- Portal readers for loss identification and prevention

[Learn More](#)



Impinj (NASDAQ: PI) is a leading provider of RAIN RFID solutions. Our platform, comprising both hardware and software, uses RAIN RFID to deliver timely information about these items to the digital world, thereby enabling the Internet of Things.

KEY POINTS:

- Improve inventory visibility
- Reduce out-of-stocks
- Enable omni-channel fulfillment
- Enhance shopping experiences
- Prevent loss

[Learn More](#)



Honeywell offers purpose-built, handheld RFID readers optimized for various applications. For retail, Honeywell offers readers that enable virtually 99% inventory accuracy, leading to increased revenue, lower markdowns and enhanced customer service and loyalty.

KEY POINTS:

- A full portfolio dedicated to RFID
- IH25 adds RFID to your award-winning touchscreen mobile computers
- 8690i Wearable RFID Mini computer – Can connects directly via WIFI
- PX Series - Mission critical Printers with RFID

[Learn More](#)



Keonn provides system integrators with the most complete, seamless and advanced set of RFID hardware and software solutions to enhance the customer shopping experience at retail stores and to track and trace items at warehouses, libraries, hospitals and other spaces.

KEY POINTS:

- RFID readers, multiplexers, antennas
- Encoding systems
- RFID inventory and tracking systems, RFID interactive systems, RFID payment systems, RFID loss-prevention systems
- Cloud software

[Learn More](#)



The go-to partner for RAIN RFID solutions with over 30 years' experience in RFID. Our extensive portfolio includes RAIN RFID mobile computers, Fixed readers, antennas, and enhancement (sled) readers. Nordic ID solutions enable customers to manage their business processes by bringing transparency and predictability to processes and operations.

KEY POINTS:

- Future-proof Android Mobile Computers, UHF RFID, 1D/2D, NFC and Camera
- Reader Enhancements (Sleds and Wearables) for IOS and Android
- UHF RFID Fixed Readers with LINUX computers & customisable portal/gate solutions
- Single API support for integration of all Nordic ID Readers

[Learn More](#)



RF IDEAS designs, develops and manufactures a complete line of pcProx® credential readers that support nearly every proximity and contactless smart card in use worldwide.

KEY POINTS:

- Protect and secure confidential information through enhanced authentication
- Integrate with traditional ID badges for more flexibility
- Designed to interface with a variety software solutions

[Learn More](#)



Unitech is a global provider of AIDC (automatic identification and data capture) and RFID technologies with over 40 years of experience. Unitech manufactures a wide range of Enterprise solutions such as mobile computers, rugged handheld PDAs, industrial tablets, RFID readers/writers, barcode scanners (1D/2D, DPM and ESD safe), embedded readers and software solutions.

KEY POINTS:

- Omni-channel solutions
- RFID handheld, pocket sized and snap-on gun grip accessory readers/writers
- RFID fixed and modules readers/writers
- RFID standard antenna, gate/port/shelve antenna and RFID tunnel reader/writers

[Learn More](#)



Only Zebra provides end-to-end solution simplicity, with everything you need to implement RFID in your organization — from well-tested industry-leading infrastructure to the expertise you need to maximize the benefits of RFID in your enterprise.

KEY POINTS:

- Printers / Readers / Antennas
- Labels / Tags / Cards
- Over 300 RFID technology patents
- Mobile and Desktop options

[Learn More](#)

CASH MANAGEMENT



We don't just build cash drawers, we create solutions. APG powers cash management solutions across a wide range of global industries and verticals. Whether it's our general application cash drawers or custom designed solutions our products and brand are differentiated by our ability to deliver innovative technologies that globally enhance efficiency and security at the point of sale.

KEY POINTS:

- RJ11 Connection
- White / Grey / Black
- Tablet and mPOS integration
- Matches all POS printer brands like Star,Citizen, Epson, ...

[Learn More](#)



Star is a global manufacturer of secure cash drawer solutions for traditional and tablet POS applications. Star's mPOP offers a unique mobile point of purchase solution for retailers requiring a Bluetooth printer and cash drawer to link with their choice of mobile device.

KEY POINTS:

- RJ11 Connection
- White / Grey / Black
- Matches Star Printers
- mPOP Receipt Printer / Cash Drawer Combination

[Learn More](#)

ACCESSORIES & CONSUMABLES

CUSTOMER DISPLAYS & SECOND SCREENS

- From 2 x 20 Line displays to 7-12" customer facing touchscreens.
- Stand alone or different mounting options.

MAGNETIC STRIPE READERS (MSR)

- Integrated from manufacturer on touch screens.
- Stand Alone USB, 3 Track, Hi-Co / Lo-Co readers.

PAYMENT TERMINALS

- Stand alone options
- Multi-manufacture offering

CABLES

- We can supply / add in non-supplied cables, Power / Mini USB / USB / Ethernet / RS232.

RFID READERS

- Integrated from manufacturer on touch screens.
- Stand Alone USB.

OTHER CONSUMABLES

- Direct Thermal & Dot Matrix Paper Rolls / Tickets / Labels / Wristbands / Ribbons





OUR PARTNERS





CONTACT US

E-mail: ask.blue@eu.bluestarinc.com

