

CUSTOM[®]

YOUR BUSINESS IMPRINT



Gaming Lottery Betting

Complete solutions anticipating new trends

www.custom.biz

TABLE OF CONTENTS

POS Terminals

DAYTONA	
ARAGON	4
SILK II	
T-TOUCH 2.0	5

Multifunction Printers and Scanners

K3 LOTTERY	7
KUBE III LOTTERY	8
KUBE III SCANNER	9
COMBO	10
SCAN105	
SCAN216	11
A6 SCANNER	
A4 SCANNER	12

POS and Mobile Printers

K3 HS	
P3L	14
MP RANGER	15

Mobile Computers and Barcode Scanners

P-RANGER	17
SCANMATIC	18

Advanced Self-Service Solutions

GLASS27	20
CONNECT	21
CASH KIOSK	22
MATE UP	23

Software Tools

App	
Chameleon Libraries	
Custom Power Tool	25
PrinterSet	
Android™ - iOS - Windows® Custom SDK	26

Digital Security

Veriprint®	28
------------	----

Our view

From our experience, we think modularity, technological innovations and wireless connections of the terminals help reducing the **total cost of ownership**.



Modularity

It **improves the performance of the store**, adapting to the needs and volumes of the shop.



TCO reduction

Having a **network of terminals** that can **easily be upgraded** according to the requirements coming from tenders and customers.



Innovation

Constant technological innovations are supported by the **re-investment of the Company's corporate profits in R&D activities**.



Efficiency

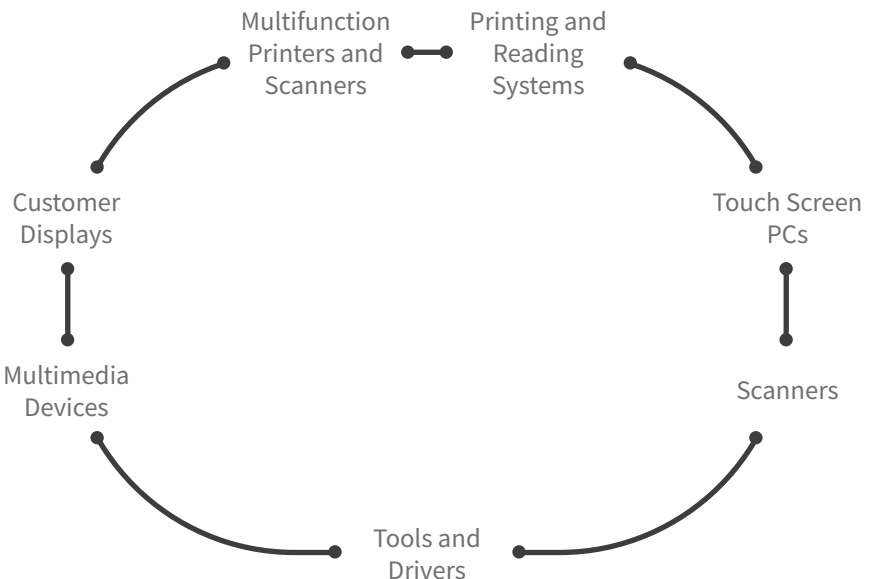
The knowledge of different markets (POS, Industrial, Transports, Gaming) and the manufacturing volumes lead to **higher quality and lower production costs**.



Mobile

These connections make the terminal **installation and configuration easier**.

Feel free to compose your own solution: Custom ensures the proper working of the whole system!





POS TERMINALS

DAYTONA
ARAGON
SILK II
T-TOUCH 2.0

DAYTONA



SSD • INSIDE



FEATURES

- Screen: 15" LCD, 4:3 LED
- Projected capacitive multi-touch touch screen
- RAM: 8GB; 8GB up to 32GB (only for i3 8145UE)
- SSD: 2.5" SATA SSD, 128GB

CONFIGURATIONS

- Intel® Celeron® J3455, 2.3GHz
- Intel® Core i3 8145UE, 3.90GHz

ACCESSORIES

- MSR (magnetic stripe reader) card reader
- 2x20 LCD customer display
- 10.1" second display

OPTIONS

- Optional Wi-Fi® and Bluetooth®

ARAGON



SSD • INSIDE



FEATURES

- Screen: 15.6" - 16:9
- Projected capacitive multi-touch touch screen
- RAM: DDR4-8GB RAM
- SSD: 2.5" SSD 128GB

CONFIGURATION

- Intel® Celeron® - J6412 8/128GB - 15.6"
- Intel® Core i3 - 10110U 8/128GB - 15.6"
- Intel® Core i5 - 10210U 8/128GB - 15.6"

ACCESSORIES

- 11.6" second display
- 15.6" second display
- MSR + NFC readers + FINGERPRINT

SILK II



SSD • INSIDE



TRUE FLAT LCD



LED TECHNOLOGY



PROJECTED CAPACITIVE



FEATURES

- Screen: 15.6" - 16:9
- Projected capacitive multi-touch touch screen
- RAM: 4GB RAM
- SSD: Flash 64GB

CONFIGURATION

- Android™ 11 4/64GB-15.6"

ACCESSORIES

- 11.6" second display
- 15.6" second display
- MSR + NFC readers + FINGERPRINT

T-TOUCH 2.0



LED TECHNOLOGY



PROJECTED CAPACITIVE



DETAIL MEMORY



FEATURES

- Screen: 10.1" (16:10)
- Projected capacitive multi-touch touch screen
- RAM: 3GB RAM
- SSD: Flash 32GB

CONFIGURATION

- Android™ 10



MULTIFUNCTION PRINTERS AND SCANNERS

K3 LOTTERY
KUBE III LOTTERY
KUBE III SCANNER
COMBO
SCAN105
SCAN216
A6 SCANNER
A4 SCANNER

K3 LOTTERY

LOTTERY PRINTER



LONG LIFE CUTTER



LONG LIFE PRINTING HEAD



AUTOMATIC OPENING



1D/2D BARCODE



ETHERNET



WI-FI®



WINDOWS® CUSTOM SDK

FEATURES

- Paper width: 82.5mm
- Paper roll diameter: max. 203 mm (external)
- Resolution: 203 dpi
- Printing speed: 254 mm/sec
- Printing head: 100 km
- Connectivity: USB
- Autocutter: 2,000,000 cuts
- 1D and 2D barcodes (PDF417, DATAMATRIX, AZTEC, QR CODE, RSS) printing
- Sensors:
 - Autocutter blade position
 - Input paper presence
 - Black mark detection
 - Head temperature
 - Paper jam
 - Stacker position
 - Low paper
 - Paper compartment cover open
- International fonts on board
- Drivers: self-installing drivers for Windows® (32/64 bit), CUPS Linux (32/64 bit); Custom Android™ API
- Custom SDK: Windows®
- Dimensions: 381 mm (L) x 154 mm (W) x 244.5 mm (H)
- Weight: 3.6 kg



KUBE III LOTTERY

LOTTERY PRINTER



LONG LIFE
CUTTER



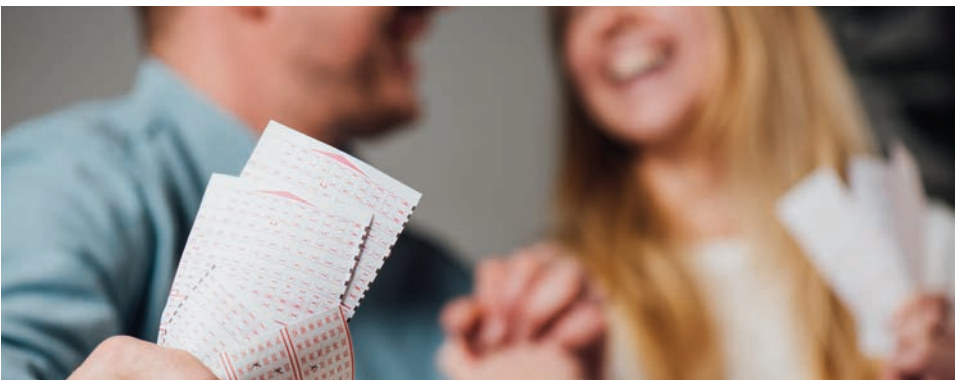
1D/2D BARCODE



WINDOWS®
CUSTOM SDK

FEATURES

- Paper width: 80mm/ 82.5mm
- Paper roll diameter: max. 150 mm
- Resolution: 203 dpi
- Printing speed: 200 mm/sec
- Printing head: 100 km
- Connectivity: USB full speed + Serial RS232
- Autocutter: 1,000,000 cuts
- 1D and 2D barcodes (PDF417) printing
- Sensors:
 - Paper presence
 - Head temperature
 - Black mark presence
 - Paper presence
 - Cover open
 - Near paper end
- International fonts on board
- Drivers: Windows® (32/64 bit); CUPS Linux (32/64 bit); Virtual COM; Custom Android™ API; Custom iOS API
- Custom SDK: Windows®
- Dimensions: 297 mm (L) x 140 mm (W) x 215 mm (H)
- Weight: 2.3 kg



KUBE III SCANNER

MULTIFUNCTION PRINTER



LONG LIFE
CUTTER



1D/2D BARCODE



CHAMELEON
LIBRARIES



WINDOWS®
CUSTOM SDK

FEATURES

- Paper width: 80mm/ 82.5mm
- Paper roll diameter: max. 150 mm
- Resolution: 200 dpi
- Printing speed: 200 mm/sec
- Printing head: 100 km
- Connectivity: USB + Ethernet interface
- Autocutter: 1,000,000 cuts
- 1D and 2D barcodes (PDF417, DATAMATRIX, AZTEC, QR CODE) printing
- Sensors:
 - Paper presence
 - Head temperature
 - Cover open
 - Near paper end
- International fonts on board
- Chameleon libraries
- Drivers: self-installing drivers for Windows® (32/64 bit), CUPS Linux (32/64 bit); Custom Android™ API
- Custom SDK: Windows®
- Dimensions: 357 mm (L) x 140 mm (W) x 216 mm (H)
- Weight: 3.3 kg



COMBO

ALL-IN-ONE SYSTEM FOR SCANNING AND PRINTING



600 DPI

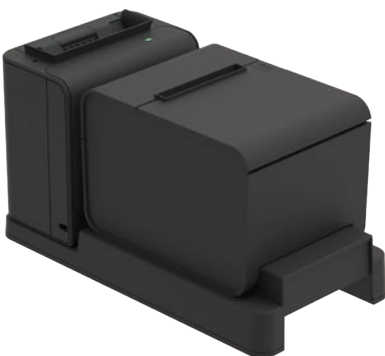


CHAMELEON
LIBRARIES



FEATURES

- Scanning speed: 400 mm/sec
- Scanning area: max. 108 mm
- Scan width: 108 mm
- Scan length: 300 mm
- Scanning resolution: 600 dpi
- Scanning formats: .raw - .bmp - .jpg
- Printing speed: 200 mm/sec
- Resolution: 203 dpi (8 dot/mm)
- Paper weight: from 60 to 90 g/m²
- Interfaces: USB
- Chameleon libraries
- Power supply: 24 Vdc ± 10 %
- Dimensions: 158 mm (L) x 316 mm (W) x 182 mm (H)
- Weight: 2.8 kg



SCAN105

A6 DESKTOP SCANNER



DPI
600 DPI

CHAMELEON
LIBRARIES

Windows 10



FEATURES

- Scanning speed: 400 mm/sec
- Scanning area: max. 108 mm
- Scan width: 108 mm
- Scan length: 300 mm
- Scanning resolution: 600 dpi
- Scanning formats: .raw - .bmp - .jpg
- Printer characteristics: Embedded thermal head for validation
- Printing speed: 200 mm/sec
- Resolution: 203 dpi (8 dot/mm)
- Interfaces: USB
- Chameleon libraries
- Drivers: Windows® (32/64 bit)
- Power supply: 24 Vdc ± 10 %
- Dimensions: 154 mm (L) x 162 mm (W) x 91 mm (H)
- Weight: 1 kg

SCAN216

A4 DESKTOP SCANNER



DPI
200 DPI

Windows 10



FEATURES

- Scanning speed: 350 mm/sec
- Scanning area: max. 200mm
- Scan width: max. 217 mm
- Scan length: max. 460 mm
- Scanning resolution: 200 dpi
- Scanning formats:
 - Bitmap images in the following formats:
 - Black and white
 - 16 shades of grey
 - 256 shades of grey
- Selectable cards: max. 40
- Search areas: max. 8800 (total)
- Printer characteristics: Embedded thermal head for validation
- Printing speed: 200 mm/sec
- Resolution: 204 dpi (8 dot/mm)
- Interfaces: USB + RS232 serial interface
- Drivers: Linux CeScanLib Library which allows the control and management of the scanner through software
- Power supply: 24 Vdc ± 10 %
- Dimensions: 352 mm (L) x 157 mm (W) x 150 mm (H)
- Weight: 2.6 kg

A6 SCANNER

A6 OEM SCANNER



COLOR



FRONT/REAR



DPI

300 DPI



CHAMELEON
LIBRARIES



Windows 10

FEATURES

- Scanning speed: 400 mm/s (B/W at 300dpi)
- Scanning area: 108 mm
- Scan width: 108 mm
- Scan length: 3000 mm
- Scanning resolution: 100 dpi, 150 dpi, 200 dpi, 250 dpi, 300 dpi
- Scanning formats: .bmp, .jpeg, .png, .raw, .tiff (without compression), .tiff (CCITT3 compression), .tiff (CCIT4 compression), .tiff (RLE compression), .tiff (LZW compression)
- Paper weight: from 50 g/m2 to 200 g/m2
- Interfaces: USB 480 Mbit/s (USB 2.0)
- Chameleon libraries
- Drivers: Windows® (32/64 bit); CUPS Linux (32/64 bit)
- Power supply: from 24 Vdc ±10% (optional external power supply)
- Dimensions: 115 mm (L) x 166.5 mm (W) x 76.1 mm (H)
- Weight: 1 kg

A4 SCANNER

A4 OEM SCANNER



COLOR



FRONT/REAR



DPI

600 DPI



CHAMELEON
LIBRARIES



Windows 10

FEATURES

- Scanning speed: 400 mm/sec (B/W at 300dpi)
- Scanning area: max. 217 mm
- Scan width: 217.4 mm
- Scan length: 70 mm
- Scanning resolution: 200 dpi, 300 dpi, 600 dpi
- Scanning formats: .raw - .bmp - .tif - .jpg
- Paper weight: from 50 g/m2 to 200 g/m2
- Interfaces: USB 5 Gbit/s (USB 3.1)
- Chameleon libraries
- Drivers: Windows® (32/64 bit)
- Power supply: from 12 Vdc to 24 Vdc ±10% (optional external power supply)
- Dimensions: 274 mm (L) x 127.4 mm (W) x 77 mm (H)
- Weight: 1.9 kg



POS AND MOBILE PRINTERS

K3 HS
P3L
MP RANGER

K3 HS

POS PRINTER



LONG LIFE CUTTER



LONG LIFE PRINTING HEAD



AUTOMATIC OPENING



1D/2D BARCODE



ETHERNET



WI-FI®



WINDOWS®, ANDROID™, iOS
CUSTOM SDK

FEATURES

- Receipts printing
- Paper width 80/60/58 mm (adjustable with the supplied adapter)
- Maximum external paper roll diameter 100 mm
- Resolution: 203 dpi
- Printing speed: max. 400 mm/sec
- Printing head: 200 km
- Connectivity: RS232 + USB + Ethernet
- Vertical mount
- Autocutter 1,000,000 cuts
- 1D and 2D barcodes (QR codes, DATAMATRIX, PDF417, AZTEC) printing
- International fonts on board
- Custom SDK: Windows®, Android™, iOS
- Dimensions: 206 mm (L) × 148 mm (W) × 140 mm (H)
- Weight: 1.98 kg

P3L

POS PRINTER



LONG LIFE CUTTER



LONG LIFE PRINTING HEAD



1D/2D BARCODE



ETHERNET



ANDROID™, iOS
CUSTOM SDK

FEATURES

- Invoices/receipts and orders printing
- Paper width: 80 mm
- Maximum external paper roll diameter 80 mm
- Resolution: 203 dpi
- Printing speed: 250 mm/sec
- Printing head: 150 km
- Connectivity: RS232 + USB + Ethernet
- Vertical mount
- Autocutter 1,500,000 cuts
- 1D and 2D barcodes (PDF417, QR codes) printing
- International fonts on board
- Custom SDK: Android™, iOS
- Dimensions: 196 mm (L) × 144 mm (W) × 148 mm (H)
- Weight: 1 kg

MP RANGER

MOBILE PRINTER



Single charging cradle



5-Position charging cradle



SMART
BATTERY



STURDY/
HEAVY DUTY



LABEL
PRINTER



OUTDOOR
USE

IP54

IP54
PROTECTION



BLUETOOTH®



ANTI-SHOCK



WI-FI®

FEATURES

- Receipts and labels printing
- Paper width: 76.2 and 80 mm
- Printing width: 72 mm
- Paper weight: from 55 g/m² to 100 g/m²
- Resolution: 203 dpi
- Printing speed: max. 110 mm/sec
- Printing head: 50km / 100m pulses
- USB 2.0 type C Full Speed, Wi-Fi® and Bluetooth® 4.2 BLE
- Autonomy: 720 minutes x 300 tickets with a 2600 mAh “smart” lithium battery that provides information such as battery status and number of charge cycles
- Batteries: Li-ion 7.2V 2.6 Ah 18.72 Wh
- Operating temperature: -10°C +50°C
- Prints 1D and 2D barcodes (QR codes)
- Dual LED for status display and battery status
- Protection: IP54

- International fonts on board
- PrinterSet
- Customprint
- Custom Print Service
- Drivers: Windows® (32/64 bit)
- Dimensions: 149 mm (L) × 122 mm (W) × 53 mm (H)
- Weight: 475 g (including battery)

ACCESSORIES

- Belt bag with shoulder strap
- Single cradle
- 5-position cradle
- Power supply

SDK

- Android™ and iOS (Bluetooth® in BLE [Bluetooth® Low Energy])



CUSTOMPRINT

App that allows printing all the data contained inside it directly from your smartphone, such as call lists, texts, contacts, photos and also web pages and drawings, through Bluetooth® interfaces.



CUSTOM PRINT SERVICE

App that allows direct printing without the need to install any library.





MOBILE COMPUTERS AND BARCODE SCANNERS

P-RANGER
SCANMATIC

P-RANGER

RUGGED PALM COMPUTER



Single cradle

Pistol grip



Silicon case

Vehicle cradle



4 slot cradle



FINGERPRINT



BATTERY



NFC



4G



STURDY/
HEAVY DUTY



SCANNER

IP67

IP67
PROTECTION



ANTI-SHOCK

FEATURES

- Operating system: Android™ 7.0 / Android™ 12 for RP312 A12
- 8.0 Mpx rear camera
- Display: 5" 1280 × 720 HD AGC Dragontrail
- NFC
- Protection: IP67
- Network: GSM/3G/4G
- Dual SIM card (two micro-SIM cards + one microSD card)
- Navigation: GPS, GLONASS, BEIDOU
- Battery: 4000 mAh
- Versions without fingerprint (RP100/RP310/RP310 A10)
- Fingerprint version: up to 5 memorized fingerprints (RP340)
- Scanner version 1D/2D (RP300/RP340/RP310)
- Drop resistance: 122 cm
- Dimensions: 76 mm (L) × 165 mm (W) × 15.6 mm (H)
- Weight (without battery):
 - RP100: 177 g
 - RP300: 186 g
 - RP340: 189 g

ACCESSORIES

- Single cradle
- 4-Position cradle
- Vehicle cradle
- Extended battery: 8000 mAh (with dedicated battery cover)
- Pistol grip
- Tempered glass protector
- Protective silicone cover
- Battery charger for car

android 

 SOTI MOBICONTROL

SCANMATIC

BARCODE SCANNER



1D/2D BARCODES



ERGONOMIC
DESIGN



READING FROM
SMARTPHONES

FEATURES

- Reading barcodes:
 - 1D for SM410, SM100
 - 1D and 2D for SM420, SM200+SM600, SM425
- Interfaces: USB, HID USB, VCOM, RS232 (only for SM410 e SM420 models)
- Available also scanner BT SM425, complete with charging cradle
- Reading distance:
 - 1D (up to 550 mm at 20 mil / 0.5 mm, PCS 90%, Code 39)
 - 2D (250 mm at 20 mil / 0.5 mm, PCS 90%)
- Easy to install with pre-configuration
- Excellent reading performance in poorly illuminated environments and on label holders
- Protection: IP42 (only for SM410 and SM420 models)
- Optional stand for easy hands-free reading (only for SM410 e SM420 models)
- Automatic detection with “smart trigger”

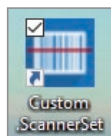
- A serial cable kit is also available to transform the 2D USB reader into a 2D serial reader (only for SM420)
- CUSTOM ScannerSet: Software for configuring scanners in the SCANMATIC range (cable programming)
- Drop resistance: 180 cm
- Dimensions: 73.5 mm (L) × 173 mm (W) × 76.2 mm (H)
- Weight:
 - SM100: 90 g
 - SM420: 110 g
 - SM425: 160 g

AVAILABLE MODELS

- SM410 - 1D
- SM420 - 2D
- SM100 - 1D
- SM200 - 2D
- SM425 - 2D
- SM600 - 2D Presentation Scanner

CUSTOM SCANNERSET:

Software for configuring scanners in the SCANMATIC range (cable programming)





ADVANCED SELF-SERVICE SOLUTIONS

GLASS27
CONNECT
CASH KIOSK
MATE UP

GLASS27

ADVANCED SOLUTION FOR RETAIL

GLASS27 is Custom's newest Advanced Solution. Developed for those sectors such as Retail and Fashion that, a part from high performances, also require systems with the finest, most innovative design. Thanks to the revolutionary FHD full glass technology with built-in monitor and receipt printer, GLASS27 combines style and function, supports both Windows® and Android™ operating systems, and can integrate the market's most frequently used PinPads.

This solution is available in desktop, pedestal, double-sided and wall mount, becoming the perfect match for the needs of multiple markets and business.

FEATURES

- Screen: 27" 16:9 - Portrait Mode
- Touch screen: Pcap 27" Zytronic Vandal-proof Multitouch integrated in the front glass
- More peripherals connected to the kiosk
- 80mm POS Thermal Printer
- Dimensions: 576 mm (L) x 199.73 mm (W) x 715.61 mm (H)

AVAILABLE MODELS

- Glass27 i5
- Glass27 Android™

ACCESSORIES

- Kiosk barcode reader
- Kiosk RFID reader
- Single pedestal



1D/2D BARCODES



PROJECTED CAPACITIVE



Desktop / wall mount configuration



Single pedestal configuration

CONNECT

ADVANCED SOLUTION FOR RETAIL

CONNECT is an innovative and multifunctional stand, designed for simple integration of different receipt printers and a touch computer into a self-service kiosk. CONNECT is designed to meet the needs of different types of applications, unattended or attended, in a compact and stylish design. Choose between a countertop model or a floor standing model to fit your needs.

FEATURES

- Suitable for displays from 15" to 24" landscape or portrait
- More peripherals connected to the kiosk
- 80mm (Fiscal/Non Fiscal)
- Dimensions: countertop version:
320 mm (L)xmin. 488 mm-max. 582.5 mm (H)x290 mm (W)
floor version:
450 mm (L)xmin. 1317 mm-max. 1411.5 mm (H)x420 mm (W)

ACCESSORIES

- Payment terminal support
- Cover panel for no printer version
- Barcode reader support



Stand + base
(countertop version)

Stand + pedestal + base
(floor version)



Connect in countertop configuration with optional receipt printer, touch computer and payment terminal



Connect in floor standing configuration with optional receipt printer, touch computer and payment terminal

CASH KIOSK

SELF-SERVICE KIOSK

FEATURES

- Touch Screen: 32" touch PCAP
- Quad-Core ARM - Rockchip RK3288
- Linux / Windows® IoT / Android™
- Memory RAM: 2GB/8GB
- Storage: 32/128GB SSD
- High Performance barcode scanner able to read in low light conditions
- Unattended or desktop payment systems
- Receipt printers: It is possible to install Kiosk printers with antijam solution or desktop fiscal and no-fiscal printers
- Display: 32"
- Side LEDs for illumination and message to the user
- Optional WebCam and audio kit
- Possibility of wall or pedestal installation

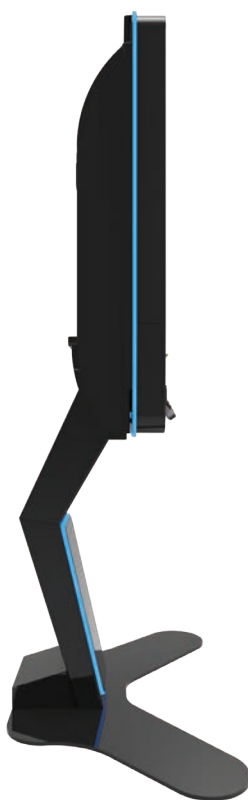


1D/2D BARCODES



PROJECTED CAPACITIVE

Windows 10



MATE UP

SELF-SERVICE KIOSK

FEATURES

- Frame in galvanized sheet metal with variable thicknesses
- 21.5" Monitor with widescreen display 16:9
- Anti-vandal retro-projected capacitive touch screen
- Embedded KBR2D-C Custom barcode scanner
- More peripherals connected to the kiosk
- Dimensions: 560 mm (L) x 430 mm (W) x 1476 mm (H)

AVAILABLE MODELS

- Kiosk Mate Up
- Kiosk Mate Android™
- Kiosk Mate Windows® 10

ACCESSORIES

- Custom printer preparation kit
- Wheel kit for Kiosk Mate
- Feet kit for Kiosk Mate



1D/2D BARCODES



PROJECTED
CAPACITIVE



BACK OFFICE SOFTWARE

- Digital signage with content management shown by the kiosk (images and videos)
- Products with category management, descriptions, variants, prices
- Accounting with best-selling products, inventory analysis, reports
- Hardware setup and interface settings
- Support with peripheral and PC management

A vertical banner image featuring a golfer in mid-swing on a green field under a blue sky with white clouds. In the foreground, a white golf ball sits on the grass. A white diagonal overlay covers the bottom right portion of the image, containing text.

SOFTWARE TOOLS

APP

CHAMELEON LIBRARIES

CUSTOM POWER TOOL

PRINTERSET

ANDROID™ CUSTOM SDK

iOS CUSTOM SDK

WINDOWS® CUSTOM SDK

APP

Tailored applications, both Android™ and iOS.
Possibility to create any type of functionality and customization: database integration, push notifications, QR code download, geolocation, news, reserved areas and contactless payments.



CHAMELEON LIBRARIES

Chameleon is the extremely versatile library which works with Custom's scanning solutions, in Windows®, Linux and Android™ environment.

Thanks to its powerful algorithm, Chameleon is able to decode playslips with OMR (Optical Marker Recognition), OCR (Optical Characters Recognition) and read 1D and 2D barcodes.

Chameleon Setup : software that allows to create and then to export the XML file of the tickets for the Chameleon library.



CUSTOM POWER TOOL

Thanks to Custom Power Tool you can create - or change - on your own the layout of your tickets or receipts in a few simple steps. You can also do it without having computer skills, thanks to the practical interface which has been designed by Custom.

You will be able to print from any operating system directly using the software: the libraries can be integrated into your application to edit and print the ticket with all the Custom printers, without installing any additional tools.

From the first draft of the ticket layout to the project creation, up to the files automatically saved in the application, that can also be moved to other systems with a simple copy and paste: with Custom Power Tool customization is really simple.



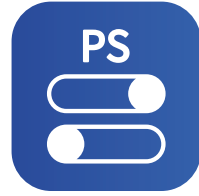
PRINTERSET

PrinterSet allows to manage fonts and logos, to update the firmware and setup your Custom printer.

In a single tool many features for a complete, easy and fast printer management.

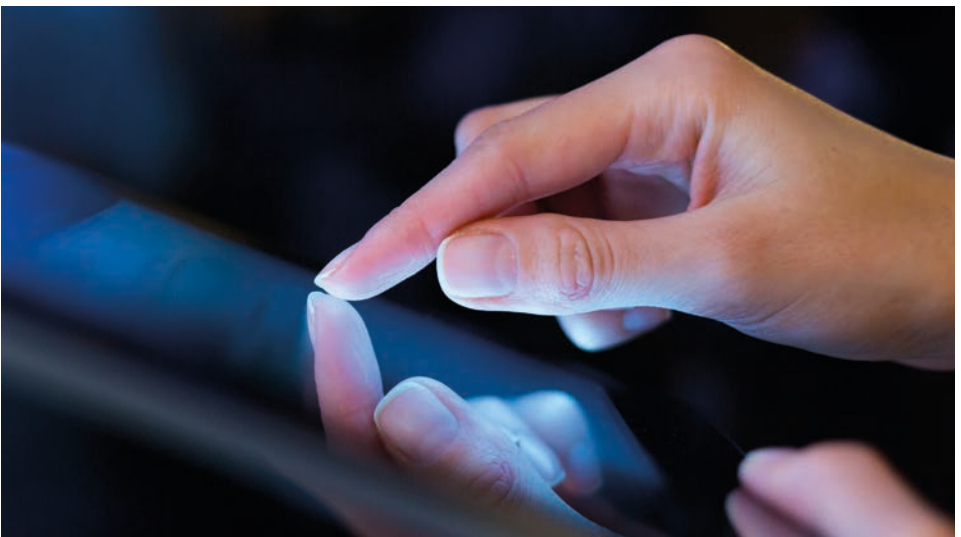
With PrinterSet is possible to setup the functioning parameters of Custom printers. With this tool the user will no longer have troubles in creating a single file able to include the different SW customizations and send them to the printer through the interface for an easy and fast set up (ideal for production).

Thanks to the internal font editor, it is possible to change and customize the fonts for a perfect printout. You can update the logos inside your printer with a simple drag&drop. It is also possible to change your images directly from PrinterSet thanks to the simple but effective graphic editor included in the software. PrinterSet allows also to remotely update the printer's firmware to benefit from the latest features released by Custom.



ANDROID™ - iOS - WINDOWS® CUSTOM SDK

Custom SDK helps the integration of Custom printers, these SW libraries allows to print text, barcodes and images through different communication ports, COM, Virtual COM, USB, Eth/Wi-Fi® or Bluetooth® and get realtime status and manage specific features from the printer.





DIGITAL SECURITY

VERIPRINT®

VERIPRINT®

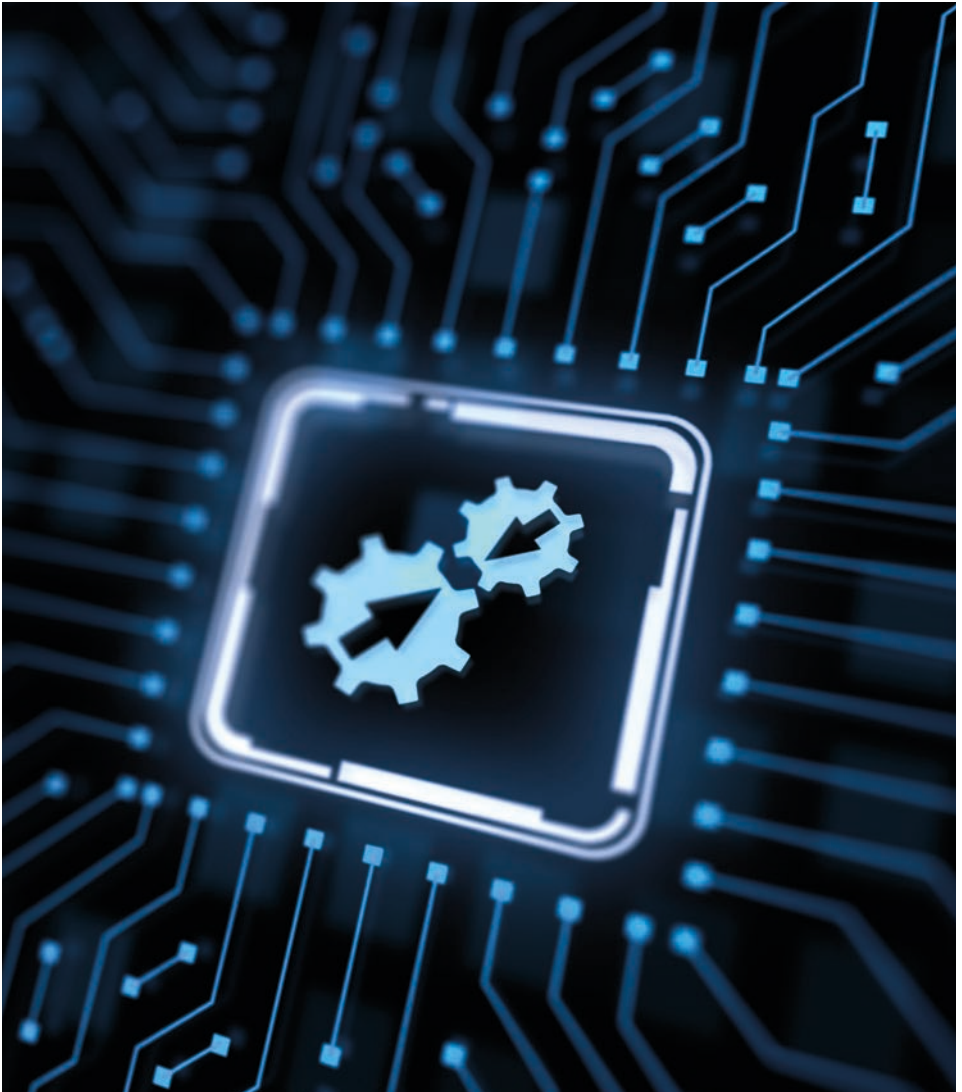
PREVENT FRAUD WITH TECHNOLOGY

The Veriprint® system, while printing a ticket, saves in real time a digital image of the issued ticket. This image can be saved inside the printer in a mass memory (MMC, SD) or it can be sent to the remote host. The image can also be elaborated by the printer to verify if it has been correctly printed.



FEATURES

- Electronic copy of the ticket compliant with the original one
- Automatic storage of all the images of the ticket in local or central database
- Direct access to image folders from embedded web browser
- System protection against fake tickets
- Original ticket image's retrieval for checking
- Automatic check of the correct printing of the barcode
- Maximum safety and consequent reduction of costs and claims
- Detection of hardware components needing maintenance (broken printing head), TCO reduction



CUSTOM®



CUSTOM S.p.A.

World Headquarters

Via Berettine, 2

43010 Fontevivo, **Parma** ITALY

Tel. +39 0521 680111 Fax +39 0521 610701

info@custom.biz - www.custom.biz