

# CUSTOM<sup>®</sup>

YOUR BUSINESS IMPRINT



## Kiosk/Industrial

Solutions for the Industrial  
and Manufacturing sector

[www.custom.biz](http://www.custom.biz)

# TABLE OF CONTENTS

## Printing Mechanisms and Panel Printers

---

mPLUS2	
PLUS2 / PLUS4	3

## Self-Service / Kiosk Printers

---

TG02H / TG1260HIII	5
TG2460HIII / TG2480HIII	6
TL60III / TL80III	7
TPTCM60III / TPTCM112III	8
MODUS3 X	9
VKP80III	10
KPM150HIII	11
KPM180H	12
KPM302III	13
KPM862	14
KPM216HIII	15

## Mobile Computing

---

P-RANGER	17
K-RANGER	18

## Scanning and Image Systems

---

SCANMATIC	20
KBR2D / A4 SCANNER / A6 SCANNER	21

## Label Printers

---

D4 SERIES	23
-----------	----

## Special Solutions

---

PP54 EVO	25
----------	----

## Software

---

CUSTOM POWER TOOL	
PRINTER SET / CHAMELEON LIBRARY	27



# PRINTING MECHANISMS AND PANEL PRINTERS

mPLUS2  
PLUS2 / PLUS4

# mPLUS2

MINI PANEL PRINTER



1D/2D BARCODES



FONTS ON-BOARD



SDK AND APP AVAILABLE

## FEATURES

- Resolution: 203 dpi, 8 dots/mm
- Printing speed: max. 50 mm/sec (in absence of energy-efficient functionality)
- 1D, PDF417 and QR CODE
- Paper width: 58 mm
- Paper weight: from 55 to 110 g/m<sup>2</sup>
- Roll dimension: External max. 30 mm, Internal: 13 mm
- Interfaces: RS232/TTL, mini USB
- Sensors: head temperature, paper end, cover open

- Windows® (32/64 bit) – only on request WHQL and silent installation; Linux (32/64 bit); Virtual COM (Linux or Windows® 32/64 bit); Android™
- PrinterSet, Custom Windows API
- Dimensions: 63.9 mm (L) x 87.2 mm (W) x 61.2 mm (H)
- Weight: 98 g

## AVAILABLE MODEL

- MPLUS2 RX65 USB RS232 TTL

# PLUS2

PANEL PRINTER



1D/2D BARCODES



FONTS ON-BOARD



SDK AND APP AVAILABLE

## FEATURES

- Resolution: 203 dpi, 8 dots/mm
- Printing speed: max. 50 mm/sec (in absence of energy-efficient functionality)
- 1D and 2D (QR CODE)
- Paper width: 58 mm
- Paper weight: from 55 to 70 g/m<sup>2</sup>
- Roll dimension: max. external diameter 50 mm; Internal diameter 12 mm
- Interfaces: RS232/TTL (selectable with lever switch), mini USB
- Sensors: head temperature, paper presence, cover open (optional)

- Windows® (32/64 bit) – only on request WHQL and silent installation; Linux (32/64 bit); Virtual COM (Linux or Windows® 32/64 bit); Android™
- PrinterSet, CustomPowerTool, Custom Windows API
- Dimensions: 56.9 mm (L) x 85 mm (W) x 85 mm (H)
- Weight: 145 g

## AVAILABLE MODELS

- PLUS2 RX65 USB RS232 TTL
- PLUS2 RX65 USB RS232 TTL MOV

# PLUS4

4" PANEL PRINTER



1D/2D BARCODES



FONTS ON-BOARD



SDK AND APP AVAILABLE

## FEATURES

- Resolution: 203 dpi, 8 dots/mm
- Printing speed: max. 70 mm/sec
- 1D, PDF417 and QR CODE
- Paper width: 112 mm (max. 114mm) with internal guides for 80 and 82.5 mm formats
- Paper weight: from 50 to 60 g/m<sup>2</sup>
- Roll dimension: max. external diameter 50 mm; Internal diameter 12 mm
- Interfaces: RS232/TTL, mini USB
- Sensors: head temperature, paper end, cover open (optional)

- Windows® (32/64 bit) – only on request WHQL and silent installation; Linux (32/64 bit); Virtual COM (Linux or Windows® 32/64 bit); Android™; iOS
- PrinterSet, CustomPowerTool, Status Monitor, Custom Windows API
- Dimensions: 149 mm (L) x 71.7 mm (W) x 97.8 mm (H) 149 mm (L) x 89.1 mm (W) x 97.8 mm (H) (with module)
- Weight: 390 g

## AVAILABLE MODELS

- PLUS4 USB RS232 TTL

A photograph of two young women standing outdoors. The woman on the left has long brown hair and is wearing a yellow top. The woman on the right is wearing a straw hat, round sunglasses, and a blue and white striped shirt. They are both looking at a document held by the woman on the right. The background is a bright, sunny outdoor setting with trees and a building.

## SELF-SERVICE / KIOSK PRINTERS

TG02H / TG1260HIII

TG2460HIII / TG2480HIII

TL60III / TL80III

TPTCM60III / TPTCM112III

MODUS3 X

VKP80III

KPM150HIII

KPM180H

KPM302III

KPM862

KPM216HIII

# TG02H

58 MM RECEIPT/TICKET PRINTER



1D/2D BARCODES



FONTS  
ON-BOARD



## FEATURES

- Resolution: 203 dpi, 8 dots/mm
- Printing speed: 80 mm/s
- Supported Barcode: 1D/ 2D QR CODE
- Paper width: 58 mm
- Paper weight: from 55 to 60 g/m<sup>2</sup>
- Roll dimension: up to 90 mm
- Interfaces: RS232 (TTL available), USB, AUX Gaming Optional
- Sensors: Head temperature, paper presence, near paper end, anti-jamming
- Drivers: Windows® (32/64 bit) - only on request WHQL and silent installation; Linux (32/64 bit); Virtual COM (Linux or Windows® 32/64 bit); Android™; iOS

- Software Tools: PrinterSet, CustomPowerTool, Custom Windows API
- Dimensions:  
129 mm (L) x 100 mm (W) x 120 mm (H) (black bezel)  
126.2 mm (L) x 92 mm (W) x 85.2 mm (H) (illuminated bezel)
- Weight: 0.33 Kg

## AVAILABLE MODEL

- TG02H USB RS232

# TG1260HIII

60 MM RECEIPT/TICKET PRINTER



1D/2D BARCODES



FONTS  
ON-BOARD



FULL STATUS  
MONITOR



## FEATURES

- Resolution: 203 dpi, 8 dots/mm
- Printing speed: 60 mm/sec
- Supported Barcode: 1D/ 2D QR CODE
- Paper width: 60 mm
- Paper weight: from 55 to 70 g/m<sup>2</sup>
- Roll dimension: 100 mm
- Interfaces: RS232 + USB
- Sensors: Head temperature, paper jamming, paper presence, notch presence, optional: almost external paper end
- Drivers: Windows® (32/64 bit) - only on request WHQL and silent installation; Linux (32/64 bit); Virtual COM (Linux or Windows® 32/64 bit); Android™

- Software Tools: Status Monitor, PrinterSet, CustomPowerTool, Custom Windows API
- Dimensions:  
100 mm (L) x 93 mm (W) x 120 mm (H) (with front)  
118 mm (L) x 114 mm (W) x 80 mm (H) (with automatic cutter)
- Weight: 0.6 Kg

## AVAILABLE MODEL

- TG1260HIII USB CUTTER LED OUT

# TG2460HIII

60 MM RECEIPT/TICKET PRINTER



TG2460HIII EJECTOR

TG2460HIII CUTTER



1D/2D BARCODES



FONTS ON-BOARD



FULL STATUS MONITOR



## FEATURES

- Resolution: 203 dpi, 8 dots/mm
- Printing speed: 140 mm/sec
- Supported Barcode: 1D/ 2D QR CODE
- Paper width: 60 mm
- Paper weight: from 55 to 70 g/m<sup>2</sup>
- Roll dimension: 100 mm
- Interfaces: RS232 + USB
- Sensors: Head temperature, paper jamming, paper presence, notch presence, optional: almost external paper end
- Drivers: Windows® (32/64 bit) - only on request WHQL and silent installation; Linux (32/64 bit); Virtual COM (Linux or Windows® 32/64 bit); Android™
- Software Tools: Status Monitor, PrinterSet, CustomPowerTool, Custom Windows API

- Dimensions:  
100 mm (L) x 93 mm (W) x 120 mm (H) (with front)  
118 mm (L) x 114 mm (W) x 80 mm (H) (with automatic cutter)
- Weight: 0.6 Kg

## AVAILABLE MODEL

- TG2460HIII USB RS232 CUT HC STD
- TG2460HIII USB RS232 CUTTER
- TG2460HIII USB RS232 CUTTER EJECTOR
- TG2460HIII USB TEAR OFF TRASP. BEZ

# TG2480HIII

80 MM RECEIPT/TICKET PRINTER



1D/2D BARCODES



FONTS ON-BOARD



FULL STATUS MONITOR



## FEATURES

- Resolution: 203 dpi, 8 dots/mm
- Printing speed: 150 mm/sec
- Supported Barcode: 1D/ 2D QR CODE
- Paper width: 80 mm
- Paper weight: from 55 to 80 g/m<sup>2</sup>
- Roll dimension: max. 90 mm
- Interfaces: RS232 + USB
- Sensors: Head temperature, paper presence, paper jamming, ticket collection, near paper end sensor
- Drivers: Windows® (32/64 bit) - only on request WHQL and silent installation; Linux (32/64 bit); Virtual COM (Linux or Windows® 32/64 bit); OPOS

- Software Tools: Status Monitor, PrinterSet, CustomPowerTool, Custom Windows API
- Dimensions:  
271.5 mm (L) x 130.2 mm (W) x 102 mm (H) (without ejector)  
260.2 mm (L) x 130.2 mm (W) x 102 mm (H) (with ejector)
- Weight: 1130 g (without ejector)  
1250 g (with ejector)

## AVAILABLE MODEL

- TG2480HIII USB RS232

# TL60III

60 MM RECEIPT/TICKET PRINTER



1D/2D BARCODES



FONTS  
ON-BOARD



FULL STATUS  
MONITOR



## FEATURES

- Resolution: 203 dpi, 8 dots/mm
- Printing speed: 140 mm/sec
- Supported Barcode: 1D/ 2D QR CODE
- Paper width: 60 mm
- Paper weight: from 55 to 80 g/m<sup>2</sup>
- Roll dimension: max. 80 mm
- Interfaces: RS232 + USB
- Sensors: Head temperature, paper presence
- Drivers: Windows® (32/64 bit) - only on request WHQL and silent installation; Linux (32/64 bit); Virtual COM (Linux or Windows® 32/64 bit); Android™

- Software Tools: Status Monitor, PrinterSet, CustomPowerTool, Custom Windows API
- Dimensions: 130 mm (L) x 105 mm (W) x 77 mm (H)
- Weight: 0.800 Kg

## AVAILABLE MODEL

- TL60III USB RS232
- TL60III USB RS232 EJECTOR

# TL80III

80 MM RECEIPT/TICKET PRINTER



1D/2D BARCODES



FONTS  
ON-BOARD



FULL STATUS  
MONITOR



## FEATURES

- Resolution: 203 dpi, 8 dots/mm
- Printing speed: 140 mm/sec
- Supported Barcode: 1D/ 2D QR CODE
- Paper width: 60 mm
- Paper weight: from 55 to 80 g/m<sup>2</sup>
- Roll dimension: max. 90 mm
- Interfaces: RS232 + USB
- Sensors: Head temperature, paper presence
- Drivers: Windows® (32/64 bit) - only on request WHQL and silent installation; Linux (32/64 bit); Virtual COM (Linux or Windows® 32/64 bit); Android™

- Software Tools: Status Monitor, PrinterSet, CustomPowerTool, Custom Windows API
- Dimensions: 128.7 mm (L) x 130.2 mm (W) x 77 mm (H)
- Weight: 0.900 Kg

## AVAILABLE MODEL

- TL80III USB RS232



# TPTCM60III

## 60 MM RECEIPT/TICKET PRINTER



1D/2D BARCODES



FONTS  
ON-BOARD



### FEATURES

- Resolution: 203 dpi, 8 dots/mm
- Printing speed: >140 mm/sec
- Supported Barcode: 1D/ 2D QR CODE
- Paper width: 60 mm
- Paper weight: from 60 to 90 g/m<sup>2</sup>
- Roll dimension: max. 160 mm (90 mm without roll holder stirrup)
- Interfaces: RS232 + USB
- Sensors: Head temperature, paper presence
- Drivers: Windows® (32/64 bit) - only on request WHQL and silent installation; Linux (32/64 bit); Virtual COM (Linux or Windows® 32/64 bit); Android™
- Software Tools: PrinterSet, CustomPowerTool, Status Monitor, Custom Windows API

- Dimensions:  
194.5 mm (L) x 112.4 mm (W) x 80.3 mm (H) (with short paper mouth)  
265.5 mm (L) x 115 mm (W) x 80.3 mm (H) (with dispenser)
- Weight: 1.2 Kg (without ejector)  
1.5 Kg (with ejector)

### AVAILABLE MODEL

- TPTCM60III USB RS232 EJECTOR
- TPTCM60IIIL USB RS232 NOTCH

# TPTCM112III

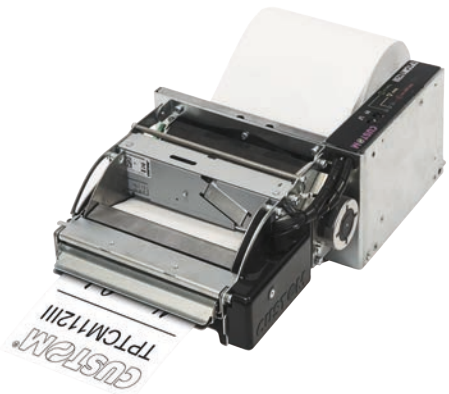
## 112 MM RECEIPT/TICKET PRINTER



1D/2D BARCODES



FONTS  
ON-BOARD



### FEATURES

- Resolution: 203 dpi, 8 dots/mm
- Printing speed: >140 mm/sec
- Supported Barcode: 1D/ 2D QR CODE
- Paper width: 112 mm
- Paper weight: from 60 to 90 g/m<sup>2</sup>
- Roll dimension: max. 160 mm (120 mm without roll holder)
- Interfaces: RS232 + USB
- Sensors: Head temperature, paper presence
- Drivers: Windows® (32/64 bit) - only on request WHQL and silent installation; Linux (32/64 bit); Virtual COM (Linux or Windows® 32/64 bit); Android™
- Software Tools: PrinterSet, CustomPowerTool, Status Monitor, Custom Windows API

- Dimensions:  
227.4 mm (L) x 171.5 mm (W) x 95.3 mm (H) (with short paper mouth)  
300 mm (L) x 171.5 mm (W) x 95.3 mm (H) (with dispenser)
- Weight: 1.7 Kg (without ejector)  
2.1 Kg (with ejector)

### AVAILABLE MODEL

- TPTCM112III CUTTER AND NOTCH
- TPTCM112III LABEL AND CUTTER
- TPTCM112III USB RS232 EJECTOR

# MODUS3 X

54-82.5 MM RECEIPT/TICKET PRINTER



1D/2D BARCODES



FULL STATUS  
MONITOR



## FEATURES

- Ultra-compact printer with electronic card onboard, compatible with ever smaller latest generation kiosks
- Resolution: 203 dpi, 8 dots/mm
- Printing speed: 200 mm/sec
- 1D and 2D barcode printing (PDF417, DATAMATRIX, AZTEC, QR CODE)
- Paper width: from 54 or 82.5 mm
- Paper thickness: 63µm to 120µm
- Roll dimension: 120 mm; up to 160 mm (180 mm possible) with optional pretensioner
- Interfaces: RS232, USB 2.0, Virtual COM
- Sensors: Paper input / Printhead temperature / Cover closing / Black mark on non-thermal left side / Anti-jam (presenter model only, optional for standard model) / Ticket output (optional on standard model), and near paper end (optional)
- Software Tools: PrinterSet, CustomPowerTool, Status Monitor, Custom Windows API
- Cutter (1 Million cuts)
- Dimensions: 116 mm (L) x 51 mm (W) x 62 mm (H)  
116 mm (L) x 96 mm (W) x 62 mm (H) (with Presenter)
- Weight: 400 g; 614 g (with Presenter)

## ACCESSORIES

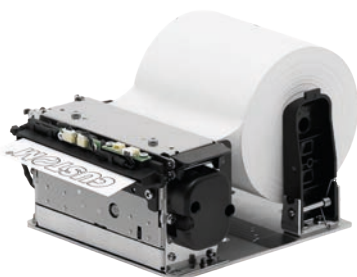
- Pretensioner for handling large rolls (diameter up to 160mm)
- Roll holder with multiple paper position and right/left side fastening up to 80mm (NPE sensor not included)
- Standard roll holder up to 80mm (NPE sensor not included)
- Paper outfeed with anti-jam sensor and ticket output sensor
- Near paper end sensor
- Serial cable with paper feed button and status led
- Power supply and cables

## AVAILABLE MODELS

- MODUS3 X USB RS232 COMPACT
- MODUS3 X USB RS232 WITH PRESENTER



SDK AND APP AVAILABLE



MODUS3 X  
STANDARD ROLL HOLDER W/O NPE SENSOR



MODUS3 X  
PRETENSIONER OPTION



MODUS3 X  
KIT PAPER MOUTH

# VKP80III

80 MM RECEIPT/TICKET PRINTER



VKP80III - SHUTTER  
UNBEATABLE ADD-ON



1D/2D BARCODES



FULL STATUS  
MONITOR



GREYSCALE  
PRINTING



## FEATURES

- The most compact high-end/top of the range kiosk printer with small footprint: 116 × 143 × 76 mm
- Resolution: 203 dpi, 8 dots/mm
- Printing speed: 250 mm/sec
- 1D and 2D barcode printing (PDF417, DATAMATRIX, AZTEC, QR CODE)
- Paper width: from 50 to 82.5 mm
- Paper weight: from 55 to 110 g/m<sup>2</sup>
- Roll dimension: max. 150 mm (up to 250mm with optional roll holder)
- Interfaces: RS232 (only for VKP80III SIDE CONN. and VKP80III REAR CONN.) USB Ethernet (only for VKP80III ETH SIDE CONN.)
- Sensors: Paper end (paper presence), paper output, printer cover open, near paper end on external paper roll holder, printing head temperature; VeriNotch: mobile notch/black mark sensor, on non thermal side; Extra cable for the paper near end sensor, it can be used when the paper roll holder is installed 90° on the right side
- PrinterSet, CustomPowerTool, Status Monitor, Custom Windows API
- Cutter (1 Million cuts)

- Hot swap function
- Print head self-diagnostic function
- Digital journal printer
- Patented retracting function w/o ticket presentation
- Patented anti-jam system with jamming autodetection and auto eject retry
- Dimensions: 143.5 mm (L) x 116 mm (W) x 76.4 mm (H)
- Weight: 0.8 Kg

## ACCESSORIES

- Shutter for outdoor
- Roll holder (NPE included)
- Jumbo roll holder kit (diameter up to 250 mm) with near paper end sensor and pretensioner
- Near paper end sensor

## AVAILABLE MODELS

- VKP80III ETH USB SIDE CONNECTORS
- VKP80III USB RS232 REAR CONN.
- VKP80III USB RS232 SIDE CONN.



SDK AND APP AVAILABLE

# KPM150HIII

COMPACT TICKET PRINTER FOR OEM INTEGRATION



1D/2D BARCODES



## FEATURES

- Resolution: 203 dpi, 8 dots/mm
- Printing speed: >180 mm/sec
- 1D and 2D barcode printing: UPC-A, UPC-E, EAN13, EAN8, CODE39, ITF, CODABAR, CODE93, CODE128, CODE32, PDF417, DATAMATRIX, AZTEC, QRCODE
- Paper width: from 20 mm to 54 mm
- Paper weight: from 80 to 180 g/m<sup>2</sup>
- Printing width: 54 mm
- Roll dimension: max. 200 mm
- Emulation: CUSTOM/POS, SVELTA
- Interfaces: RS232 / USB / VirtualCOM
- Sensors: head temperature, ticket presence, black mark detector in 3 position, translucent gap/hole detector (setting by software), ticket presence on output, cover open, external low paper
- Drivers: Windows® (32/64 bit) - only on request WHQL and silent installation; Driver CUPS Linux (32/64 bit); Virtual COM (Linux or Windows® 32/64 bit); Android™; iOS
- Software Tools: Status Monitor, PrinterSet, CustomPowerTool, Custom Windows API
- Cutter life 1 million cuts; Total cut
- Dimensions: 171 mm (L) x 114 mm (W) x 122 mm (H)  
194 mm (L) x 114 mm (W) x 122 mm (H) (with ejecter/retention ticket plastic kit)
- Weight: 1.85 Kg  
1.9 Kg (with cut/hold kit)  
1.95 Kg (with ejecter/retention ticket plastic kit)

## ACCESSORIES

- Kit Ejecter/ Retention ticket
- Power supply
- Paper roll holder

## AVAILABLE MODELS

- KPM150HIII USB RS232



KPM150HIII WITH ROLL HOLDER  
AND KIT EJECTER/RETENTION TICKET

# KPM180H

COMPACT TICKET PRINTER FOR OEM INTEGRATION



RFID  
UHF



1D/2D BARCODES



Windows 10



## FEATURES

- The smallest printer on the market
- Resolution: 203 dpi, 8 dots/mm
- Printing speed: 200 mm/sec
- 1D and 2D barcode printing (PDF417, DATAMATRIX, AZTEC, QR CODE)
- Paper width: from 20 mm to 82.5 mm
- Paper weight: from 70 to 255 g/m<sup>2</sup>
- Paper thickness: max. 270 µm
- Printing width: 80 mm
- Roll dimension: 200 mm external diameter, 25 mm internal core, not coupled to the role core
- Emulation: CUSTOM/POS, SVELTA
- Interfaces: RS232 / USB / Ethernet / VirtualCOM
- Sensors: Head temperature, paper presence, mobile detectors of black mark or translucent gap/hole (setting by software), cover open, external low paper
- Data Buffer: 16 Kb
- Flash Memory: 1 MB internal + 8 MB external (of which 4 MB available for user)
- RAM Memory: 128 Kb internal + 8 MB external
- Graphic Memory: "Drag&Drop" graphics and logo
- Drivers: Windows® (32/64 bit) - only on request WHQL and silent installation; Driver CUPS Linux (32/64 bit); Virtual COM (Linux or Windows® 32/64 bit); OPOS; Android™; iOS
- Software Tools: PrinterSet, CustomPowerTool, Status Monitor, EthLocator, Custom Windows API
- Tear-off or cutter (1 Million cuts)

- Hot swap function
- Automatic ticket ejector (optional)
- SNAP-IN power supply connector and ON/OFF button
- Back connections, feed and print buttons, both at the front and back
- Dimensions:
  - 97.5 mm (L) x 108 mm (W) x 67 mm (H) (standard version)
  - 149.5 mm (L) x 108 mm (W) x 67.5 mm (H) (cutter presenter version)
  - 234.7 mm (L) x 114 mm (W) x 67.5 mm (H) (cutter presenter RFID version)
- Weight:
  - 0.8 Kg (standard version)
  - 1.5 Kg (cutter presenter version)
  - 1.78 Kg (cutter presenter RFID version)

## ACCESSORIES

- UHF RFID module
- Pretensioner kit
- Cutter ejector module

## AVAILABLE MODELS

- KPM180H Tear Off
- KPM180H Cutter / Ejector
- KPM180H Cutter / Ejector + RFID UHF



KPM180H TEAR-OFF



KPM180H RFID

# KPM302III

RFID TICKET PRINTER FOR OEM INTEGRATION



RFID



1D/2D BARCODES



FULL STATUS  
MONITOR



## FEATURES

- Resolution: 203 dpi (300 dpi optional), 8 dots/mm
- Printing speed: 200 mm/sec
- 1D/2D barcodes printing capability (PDF417, DATAMATRIX, AZTEC, QR CODE)
- Paper width: from 20 mm to 82.5 mm
- Paper weight: from 80 to 255 g/m<sup>2</sup>
- Paper thickness: max. 280 µm
- Printing width: 80 mm
- Roll dimension: max. 300 mm
- Emulation: CUSTOM/POS, SVELTA
- Interfaces: RS232 / USB / Ethernet / VirtualCOM
- Sensors: head temperature, paper presence, paper presence in exit, mobile detector of notch or translucent gap/hole, upper and frontal cover open, external near paper end (optional)
- Data Buffer: 64 Kb
- Flash Memory: 16 MB
- Graphic Memory: Dynamic logo management (max. 2 MB graphic memory)
- Memory card SD: Capacity max. 2 GB
- Drivers: Windows® (32/64 bit) - only on request WHQL and silent installation; Driver CUPS Linux (32/64 bit); Virtual COM (Linux or Windows® 32/64 bit); OPOS; Android™; iOS
- Software Tools: PrinterSet, CustomPowerTool, Status Monitor, EasyMyfare, EthLocator, Custom Windows API
- Cutter life 1.5 million cuts; Total cut
- Automatic email sending for service purpose
- Remote logo and font uploading (True Font)
- Dimensions:
  - 191 mm (L) x 160 mm (W) x 123 mm (H) (standard version)
  - 212.7 mm (L) x 160 mm (W) x 123 mm (H) (ejector version)
  - 272.2 mm (L) x 160 mm (W) x 123 mm (H) (selector + version)
  - 307.5 mm (L) x 168 mm (W) x 123 mm (H) (triple feeder version)

- Weight:
  - 3.5 Kg (standard, ejector, selector version)
  - 5.2 Kg (triple feeder, triple feeder + ejector, triple feeder + selector version)

## ACCESSORIES

- UHF RFID module
- HF RFID module
- Ejector device
- Selector device for horizontal fixing
- Selector device for vertical fixing
- Cut & Hold kit
- Paper roll holder

## OPTIONAL

- 300 dpi version
- RFID version: multiple SAM management
- Triple paper stock feeder to manage three different rolls or fan-fold (3 lines version)
- Internal barcode scanner optimal for stock validation and fraud prevention
- Fan-fold paper support (front and back)
- Front ejector
- Burster kit / autocutter / tear-off all selectable by the user

## AVAILABLE MODELS

- KPM302III ETH USB RS232

# KPM862

RFID TICKET PRINTER FOR OEM INTEGRATION



RFID



1D/2D BARCODES



STOCK CONTROL



## FEATURES

- Resolution: 203 dpi, 8 dots/mm
- Printing speed: 220 mm/sec
- 1D and 2D: UPC-A, UPC-E, EAN13, EAN8, CODE39, ITF, CODABAR, CODE93, CODE128, CODE32, PDF417, DATAMATRIX, AZTEC, QRCODE, GS1 Databar
- Paper width: from 40 mm to 86 mm
- Paper weight: from 70 to 255 g/m<sup>2</sup>
- Paper thickness: max. 280 µm
- Printing width: 80 mm
- Roll dimension: max. 300 mm
- Emulation: CUSTOM/POS, SVELTA
- Interfaces: RS232 / USB / Ethernet / VirtualCOM
- Sensors: head temperature, paper presence, paper presence in exit, upper and frontal cover open, external near paper end (optional), CIS for notch/gap detection and "stock control" reading
- Flash Memory: 2 MB (+ 8 MB external)
- RAM Memory: 640 KB (+ 8 MB external)
- Drivers: Windows® (32/64 bit) - only on request WHQL and silent installation; Driver CUPS Linux (32/64 bit); Virtual COM (Linux or Windows® 32/64 bit); Android™
- Software Tools: PrinterSet, CustomPowerTool, Status Monitor, EasyMyfare, EthLocator, Custom Windows API
- Weight: 2.15 Kg (standard model); 3.55 Kg (model with ejector and dual feeder)

- Dimensions:
  - 163.8 mm (L) x 152.5 mm (W) x 96.5 mm (H) (standard version)
  - 182.9 mm (L) x 152.5 mm (W) x 96.5 mm (H) (ejector version)
  - 241.6 mm (L) x 152.5 mm (W) x 96.5 mm (H) (selector version)
  - 240.9 mm (L) x 155.5 mm (W) x 96.5 mm (H) (dual feeder version)

## ACCESSORIES

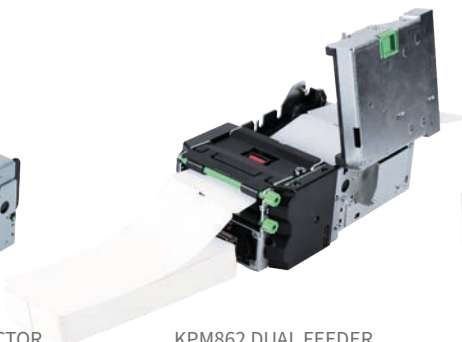
- Ejector
- Horizontal/ Vertical Selector
- HF RFID module
- Near Paper End kit
- Power supply / Power cord
- Stock control activation license (also to scan barcodes with VeriPrint®)

## AVAILABLE MODELS

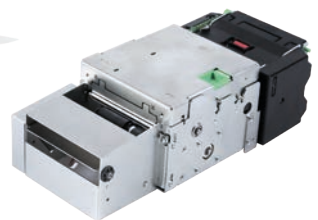
- KPM862
- KPM862 Dual Feeder
- KPM862 RFID HF
- KPM862 VeriPrint®



KPM862 FRONT EJECTOR



KPM862 DUAL FEEDER



KPM862 SELECTOR + EJECTOR

# KPM216HIII

A4/US LETTER DOCUMENT SIZE PRINTER



1D/2D BARCODES



FONTS  
ON-BOARD



FULL STATUS  
MONITOR



## FEATURES

- Resolution: 203 dpi, 8 dots/mm
- Printing speed: 180 mm/sec (according to the power supply used)
- Supported Barcode: PDF417, DATAMATRIX, AZTEC, QR CODE
- Paper width: 210 mm / 216 mm (A4" - US Letter)
- Paper weight: from 58 to 78 g/m<sup>2</sup>
- Roll dimension: max. 180 mm
- Interfaces: RS232 / USB / ETHERNET
- Sensors: head temperature, paper presence, notch sensor, outfeed paper presence, near paper end (optional)
- Drivers: Windows® (32/64 bit) – only on request WHQL and silent installation; Linux (32/64 bit); Virtual COM (Linux or Windows® 32/64 bit); Android™; iOS

- Software Tools: PrinterSet, CustomPowerTool, Status Monitor, Custom Windows API
- Cutter life 300.000 cuts
- Dimensions: 270 mm (L) x 180 mm (W) x 90 mm (H)
- Weight: 4.8 Kg

## AVAILABLE MODELS

- KM216HIII ETH USB RS232 EJECTOR
- KPM216HIII ETH USB RS232 ESP
- KPM216HIII ETH USB RS232 ESP VERT
- KPM216HIII ETH USB RS232 ESP 300



KPM216HIII VERTICAL MOUNTH



SDK AND APP AVAILABLE





# MOBILE COMPUTING

P-RANGER  
K-RANGER

# P-RANGER

RUGGED PALM COMPUTER



Single cradle

Pistol grip



Protective silicone cover

Vehicle cradle



4-Position cradle



FINGERPRINT



BATTERY



NFC



4G



STURDY/  
HEAVY DUTY



SCANNER

IP67

IP67  
PROTECTION



ANTI-SHOCK

## FEATURES

- Operating system: Android™ 7.0 / Android™ 9.0 only for RP310 / Android™ 10 for RP310 A10
- 8.0 Mpx rear camera
- Display: 5" 1280 × 720 HD AGC Dragontrail
- NFC
- Protection: IP67
- Network: GSM/3G/4G
- Dual SIM card (two micro-SIM cards + one microSD card)
- Navigation: GPS, GLONASS, BEIDOU
- Battery: 4000 mAh
- Version without fingerprint (RP310)
- Fingerprint version: up to 5 memorized fingerprints (RP340)
- Scanner version 1D/2D (RP300/RP340/RP310)
- Drop resistance: 122 cm
- Dimensions: 76 mm (L) × 165 mm (W) × 15.6 mm (H)
- Weight (without battery):
  - RP100: 177 g
  - RP310/RP310 A10: 186 g
  - RP340: 189 g

## ACCESSORIES

- Single cradle
- 4-Position cradle
- Vehicle cradle
- Extended battery: 8000 mAh (with dedicated battery cover)
- Pistol grip
- Tempered glass protector
- Protective silicone cover
- Battery charger for car

android 

 SOTI MOBICONTROL

# K-RANGER

PALM COMPUTER WITH KEYBOARD



SnapOn with USB charging bay



Single cradle



Pistol grip



4 slots cradle



BATTERY



4G



STURDY/  
HEAVY DUTY



SCANNER



KEYBOARD



LONG RANGE  
READING



TOUCHSCREEN



ANTI-SHOCK

## FEATURES

- Operating system: Android™ 9.0
- 8.0 Mpx rear camera
- Display: 4" LCD TFT with 800 × 480 resolution, projected capacitive, multi-touch screen
- Protection: IP65
- Network: WWAN, WLAN, WPAN (BT), USB 2.0 (high speed), OTG support
- Nano SIM
- Navigation: GPS, GLONASS, BEIDOU
- 1D/2D (standard and long range code)
- 38-key keyboard + alphanumeric
- Battery: 5200 mAh
- 12V 2A Power supply
- Pistol version with practical handle (Pistol Grip for KR500-G and KR550-G model)
- Drop resistance: 155 cm
- Dimensions: 77.8 mm (L) × 202.4 mm (W) × 41.6 mm (H)
- Weight (without battery):
  - KR500-G: 314 g
  - KR550-G: 349 g

## ACCESSORIES

- Single cradle
- 4-Position cradle
- Vehicle cradle
- Standard replacement battery
- Pistol grip
- Protective silicone cover
- SnapOn with USB charging bay
- Mobility truck kit with set of travel cables

android 

 SOTI MOBICONTROL



# SCANNING AND IMAGE SYSTEMS

SCANMATIC

KBR2D

A4 SCANNER / A6 SCANNER

# SCANMATIC

## BARCODE SCANNERS

SCANMATIC is the range of professional 1D and 2D barcode scanners designed to offer the best user experience in terms of speed, ease of use and absence of errors.

SCANMATIC scanners have a modern design with rugged housing, IP42 protection and unique performance. With the long range CCD (charge-coupled device) technology and optional stand, the scanner can be used hands free. In addition to supporting the scanner, the stand allows the “intelligent activation” function to be activated, thanks to which it is possible to automatically scan barcodes when placed in front of the scanner.

In the 2D version, SCANMATIC guarantees an exceptional speed of operation, not having to orient the code for reading. SCANMATIC scanners can be connected directly to the Custom electronic cash register recorders and preconfigured to ensure truly simple and quick installation.



1D/2D BARCODES



ERGONOMIC  
DESIGN



READING FROM  
SMARTPHONES

### FEATURES

- Reading barcodes:
  - 1D for SM410, SM100
  - 1D and 2D for SM420, SM200, SM600, SM425
- Interfaces: USB, HID USB, VCOM, RS232 (only for SM410 and SM420 models)
- Also available barcode scanner SM425 BT, complete with charging cradle
- Resolution:
  - 1D (4mil/0.1mm @ PCS90%, Code39)
  - 2D (3mil/0.076mm @ PCS90% Code39 - 8mil/0.2mm @ PCS90% QR Code)
- Reading distance:
  - 1D (up to 550 mm at 20 mil / 0.5 mm, PCS 90%, Code 39)
  - 2D (250 mm at 20 mil / 0.5 mm, PCS 90%)
- Easy to install with pre-configuration
- Excellent reading performance in poorly illuminated environments and on label holders
- Protection: IP42 (only for SM410 and SM420 models)
- Optional stand for easy hands-free reading (only for SM410 and SM420 models)

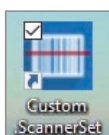
- Automatic detection with “smart trigger”
- A serial cable kit is also available to transform the 2D USB reader into a 2D serial reader (only for SM420)
- CUSTOM ScannerSet: Software for configuring scanners in the SCANMATIC range (cable programming)
- Drop resistance: 180 cm
- Dimensions: 73.5 mm (L) × 173 mm (W) × 76.2 mm (H)
- Weight:
  - SM100: 90 g
  - SM420: 110 g
  - SM425: 160 g
  - SM600: 315 g

### AVAILABLE MODELS

- 1D SM410
- 2D SM420
- 1D SM100
- 2D SM200
- 2D SM425
- 2D Presentation scanner SM600

### CUSTOM SCANNERSET:

Software for configuring scanners in the SCANMATIC range (cable programming).



# KBR2D

## KIOSK BARCODE READER



1D/2D BARCODES



READING FROM  
SMARTPHONES



OUTDOOR  
USE

### FEATURES

- Field of view: Horizontal - 55°, Vertical - 35°
- Scan rate: 60 fps (at full resolution)
- Reading distance: from 3 to 28 cm
- Ambient light: works in any lighting conditions from 0 to 100,000 lux
- Roll: 360°
- Indicator: good read beep
- Interfaces: KBR2D-C: USB-HID (or Virtual COM port); KBR2D: RS232/USB-HID (or Virtual COM port)

- Power supply: DC+5V±5%
- Dimensions: 56 mm (L) x 69 mm (W) x 28 mm (H) (KBR2D-C)
- 38.85 mm (L) x 23.50 mm (W) x 5.20 mm (H) (KBR2D)

### AVAILABLE MODELS

- KBR2D-C
- KBR2D

# A4 SCANNER

## A4 FRONT/REAR COLOR SCANNER



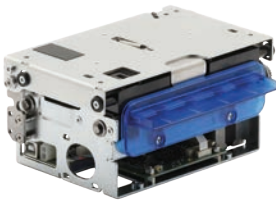
### FEATURES

- Scanner Type: Contact Image Sensor (CIS)
- Scanning speed: max. 400 mm/s (300 dpi B/W)
- Scan Length: min. 70 mm max. 1000 mm
- Scan width: 217.4 mm
- Scanning resolution: 200 dpi, 300 dpi, 600 dpi
- SW integration through evolved SDK library: CuDoubleSidedScannerAPI for Win32 and .NET
- Interfaces: USB 5 Gbit/s (USB 3.1)
- Power supply: from 12 Vdc to 24 Vdc ±10%
- Front and rear scanning
- Sturdy: full metal body
- Color (RGB) - Greyscale - Black and White
- Sensor for detection of jam/blocked sheet (internal encoder)

- Document alignment system in entrance (deskew)
- Fully inspectionable for easy cleaning and maintenance
- Retract or eject
- Front paper mouth with RGB led
- Dimensions: 274 mm (L) x 127.4 mm (W) x 77 mm (H)
- Weight: 1 Kg

### AVAILABLE MODELS

- A4 F/R color scanner
- A4 F/R color scanner with double sheet sensor



# A6 SCANNER

## A6 DOCUMENT AND CHECK COLOR SCANNER

### FEATURES

- Scanner Type: Contact Image Sensor (CIS)
- Scanning speed: max. 400 mm/s (300 dpi B/W)
- Scan Length: min. 70 mm max. 3000 mm
- Scan width: 108 mm
- Scanning resolution: 100 dpi, 150 dpi, 200 dpi, 250 dpi, 300 dpi
- SW integration through evolved SDK library: CuDoubleSidedScannerAPI for Win32 and .NET
- Interfaces: USB port 480 Mbit/s (USB 2.0)
- Power supply: from 24 Vdc ±10%
- Front and rear scanning
- Sturdy: full metal body
- Color (RGB) - Greyscale - Black and White
- Sensor for detection of jam/blocked sheet (internal encoder)

- Document alignment system in entrance (deskew)
- Fully inspectionable for easy cleaning and maintenance
- Retract or eject
- Front paper mouth with RGB led
- Dimensions: 115 mm (L) x 166.5 mm (W) x 76.1 mm (H)
- Weight: 1 Kg

### AVAILABLE MODELS

- A6 scanner with CMC7 MICR reading
- A6 scanner with double sheet sensor



# LABEL PRINTERS

D4 SERIES

# D4

## DESKTOP LABEL PRINTER



ETHERNET



STURDY/  
HEAVY DUTY



CUSTOM  
DESIGNER TOOL



1D/2D BARCODES



### FEATURES

- Printing method:
  - Direct thermal
  - Thermal transfer
- Printing width: 104 mm
- Maximum print length: 3810 mm
- Printing speed: 5 IPS
- Resolution: 203 dpi/8dot/mm
- USB slave port, Ethernet port (option for D4 102, on-board for D4 102 ETH)
- Multiple communication ports: USB (TypeA & TypeB), serial port, Ethernet port (option for D4 202/302, on-board for D4 202 ETH/302 ETH)
- 128 MB flash memory, 64 MB SDRAM
- No expansion slots. Update via tool from PC (102 version); SD expansion slot (up to 32 GB) for data storage or firmware upgrade (D4 202/302 version)
- One multifunction key, status led ( D4 102 version); 4 Multi-function keys (D4 202 version); 19 multi-function keys ( D4 302 version)
- Transparent and reflective mobile sensor, open cover sensor, belt sensor
- For noisy work environments, there is a buzzer and a flashing red led button USB interface to connect keyboard or scanner to indicate status. Colors: green: ok; red: error; amber (or orange): warning (non-blocking problem)
- 240 x 320 point LCD with graphic icons
- Pre-installed emulators: PZPL, PEPL and PDPL
- Dimensions: 263.19mm (L) x 200mm (W) x 188.29mm (H)
- Weight: 2 kg

### ACCESSORIES

- Cutting machine module
- Peeler module
- ETH module

### CUSTOM DESIGNER TOOL:

Custom Designer Tool, the professional label editor, easy to use and equipped with all the features required by the market. The software, completely free, is complete with printers configuration tool and printing driver.





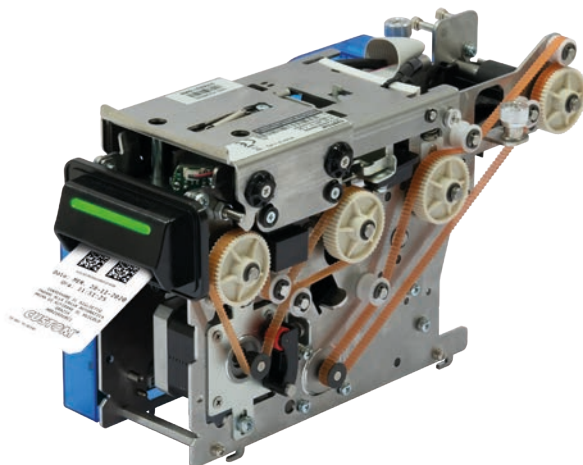


# SPECIAL SOLUTIONS

PP54 EVO

# PP54 EVO

THE MOST INNOVATIVE PARKING, TRANSPORT AND ACCESS CONTROL SYSTEM ENGINE



STURDY/  
HEAVY DUTY



STANDARD ISO  
TICKET MANAGEMENT



EASY  
MAINTENANCE



300  
DPI



1D/2D BARCODES



INTERNAL  
SCANNER

Windows 10



## FEATURES

- Resolution: 304 dpi, 12 dots/mm
- Printing speed: 150 mm/sec
- 1D & 2D Barcode Print & Read capability, Aztec, DataMatrix, PDF417, QR CODE
- Paper weight: from 140 g/m<sup>2</sup> to 210 g/m<sup>2</sup>
- Paper thickness: from 140 to 230 µm
- Printing width: 50 mm
- Emulation: CUSTOM/POS
- Interfaces: RS232 / Ethernet / optional USB
- Sensors: Head temperature, paper in, paper out, cover open, 4 internal sensor for ticket management, external near paper end (optional)
- Data Buffer: 16 Kb
- Flash Memory: 2 MB internal + 8 MB external (of which 4 MB available for user)
- RAM Memory: 512 Kb internal + 8 MB external
- Drivers: Windows® (32/64 bit) - only on request WHQL and silent installation
- Software Tools: PrinterSet, CustomPowerTool, SDK package with demo software and complete library documentation
- Cutter (1 Million cuts)
- ISO7811 ticket HD full graphic printing/scanning capability (300 dpi)
- High-End, breakthrough and unique technology worldwide
- Mono/Bi-lateral internal scanner for 2D Barcodes reading
- HF RFID Chip-On-Paper management

- Simultaneous management up to 3 tickets
- Reading/Printing ticket inserted by user and operate external device with I/O board
- Ticket ejecting/retracting/collecting
- Heavy outdoor conditions
- RGB led on paper mouth
- Plastic card management
- Input Feeder is included
- Dimensions: 270 mm (L) x 105 mm (W) x 146 mm (H)
- Weight: 3 Kg

## ACCESSORIES

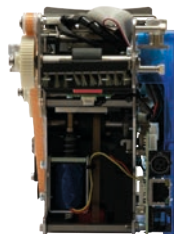
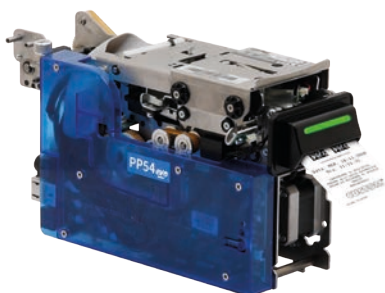
- Input/Output Board Kit
- USB Board kit
- External Display Kit
- Low Paper Sensor Board

## OPTIONAL

- Multiple interfaces Ethernet - RS232 - USB
- Near paper end sensor
- External display

## AVAILABLE MODELS

- PP54 EVO 1-CIS
- PP54 EVO 1-Feeder 1-CIS
- PP54 EVO 1-CIS RFID HF
- PP54 EVO 1-Feeder 1-CIS RFID HF
- PP54 EVO 2-CIS
- PP54 EVO 1-Feeder 2-CIS RFID HF





# SOFTWARE

CUSTOM POWER TOOL  
PRINTER SET  
CHAMELEON LIBRARY

# CUSTOM POWER TOOL

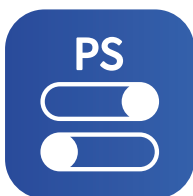
Thanks to Custom Power Tool you can create - or change - on your own the layout of your tickets or receipts in a few simple steps. You can also do it without having computer skills, thanks to the practical interface which has been designed by Custom.

You will be able to print from any operating system directly using the software: the libraries can be integrated into your application to edit and print the ticket with all the Custom printers, without installing any additional tools.

From the first draft of the ticket layout to the project creation, up to the files automatically saved in the application, that can also be moved to other systems with a simple copy and paste: with Custom Power Tool customization is really simple.



# PRINTERSET



PrinterSet allows to manage fonts and logos, to update the firmware and setup your Custom printer. In a single tool many features for a complete, easy and fast printer management.

With PrinterSet is possible to setup the functioning parameters of Custom printers. With this tool the user will no longer have troubles in creating a single file able to include the different SW customizations and send them to the printer through the interface for an easy and fast set up (ideal for production).

Thanks to the internal font editor, it is possible to change and customize the fonts for a perfect printout. You can update the logos inside your printer with a simple drag&drop. It is also possible to change your images directly from PrinterSet thanks to the simple but effective graphic editor included in the software. PrinterSet allows also to remotely update the printer's firmware to benefit from the latest features released by Custom.

# CHAMELEON LIBRARIES

Chameleon is the extremely versatile library which works with Custom's scanning solutions, in Windows®, Linux and Android™ environment.

Thanks to its powerful algorithm, Chameleon is able to decode playslips with OMR (Optical Marker Recognition), OCR (Optical Characters Recognition) and read 1D and 2D barcodes.









**CUSTOM**®



**CUSTOM S.p.A.**

World Headquarters

Via Berettine, 2

43010 Fontevivo, **Parma** ITALY

Tel. +39 0521 680111 Fax +39 0521 610701

**info@custom.biz - www.custom.biz**