

# CUSTOM<sup>®</sup>

YOUR BUSINESS IMPRINT



## Ticketing

Solutions for events,  
transports and parking

[www.custom.biz](http://www.custom.biz)

# TABLE OF CONTENTS

## Ticket Printers

---

B202HIII	.....	<b>3</b>
TK180	.....	<b>4</b>
TK180 Metal	.....	<b>5</b>
TK202III	.....	<b>6</b>
TK302III	.....	<b>7</b>
TK862	.....	<b>8</b>
TK306	.....	<b>9</b>

## Self-Service Ticket Printers

---

KPM150HIII	.....	<b>11</b>
KPM180H	.....	<b>12</b>
KPM302III	.....	<b>13</b>
KPM862	.....	<b>14</b>

## Parking, Transports and Access Control Systems

---

PP54 EVO	.....	<b>16</b>
----------	-------	-----------

## Receipt Printers

---

MODUS3 X / VKP80III	.....	<b>18</b>
---------------------	-------	-----------

## Handheld Computers

---

P-RANGER	.....	<b>20</b>
K-RANGER	.....	<b>21</b>

## Scanning and Image Systems

---

KBR2D / A4 SCANNER / A6 SCANNER	.....	<b>23</b>
---------------------------------	-------	-----------

## Special Products and Accessories

---

POS ACCESSORIES	.....	<b>25</b>
APP / MICROPLAYER / MICROPLAYER 4K	.....	<b>26</b>
MATE UP	.....	<b>27</b>
CASH KIOSK	.....	<b>28</b>

## Digital Security

---

VERIPRINT®	.....	<b>30</b>
------------	-------	-----------

## Special Solutions and Options

---

RFID / MULTI BIN	.....	<b>32</b>
------------------	-------	-----------



# TICKET PRINTERS

B202HIII

TK180

TK180 Metal

TK202III

TK302III

TK862

TK306

# B202HIII

TICKET, LABEL AND WRISTBAND PRINTER



1D/2D BARCODES



## FEATURES

- Resolution: 203 dpi
- Printing speed: 170 mm/s
- Head life: 150 Km / 100 M pulses
- Supported Barcode: UPC-A, UPC-E, EAN13, EAN8, Code39, ITF, Codabar, Code93, Code128, Code32, PDF417, Data Matrix, Aztec, QRCode
- Paper width: from 20 mm to 54 mm
- Paper weight: from 80 to 180 g/m<sup>2</sup>
- Paper thickness: max. 200 µm
- Roll dimension: max. 200 mm or fan-fold
- Emulation: CUSTOM/POS, SVELTA
- Interfaces: RS232 + USB
- Sensors: print-head temperature, ticket presence, black mark detector in 3 position, gap/black mark sensor (setting by software), ticket presence on output, cover open, external low paper (optional), cutter home
- Drivers: Windows® (32/64 bit) - only on request WHQL and silent installation; Driver CUPS Linux (32/64 bit); Virtual COM (Linux or Windows® 32/64 bit); Android™; iOS
- Software Tools: PrinterSet, CustomPowerTool, Status Monitor
- Cutter life 1 million cuts; Total cut

- Power supply (included with the printer)
- Dimensions: 194 mm (L) x 133 mm (W) x 155 mm (H)  
364 mm (L) x 155 mm (W) x 133.2 mm (H) (with paper roll holder)  
363.5 mm (L) x 133.2 mm (W) x 155 mm (H) (with metallic ticket tray)
- Weight: 2.8 Kg  
3.8 Kg (with paper roll holder)  
3 Kg (with metallic ticket tray)

## ACCESSORIES

- Roll holder
- Low paper end cable
- Low paper end sensor

## AVAILABLE MODELS

- B202HIII

# TK180

SMALL COMBINED PRINTER WITH HIGH RELIABILITY FEATURES



TK180  
METAL PAPER ROLL HOLDER



RFID



1D/2D BARCODES



## FEATURES

- Resolution: 203 dpi
- Printing speed: 200 mm/s
- Head life: 100 Km / 100 M pulses
- Supported Barcode: 1D and 2D barcode printing (PDF417, DATAMATRIX, AZTEC, QR CODE)
- Paper width: from 20 mm to 82.5 mm
- Paper weight: from 70 to 255 g/m<sup>2</sup>
- Paper thickness: max. 270 µm
- Roll dimension: 200 mm external diameter, 25 mm internal core or fan-fold
- Emulation: CUSTOM/POS, SVELTA
- Interfaces: RS232 / USB / ETHERNET
- Sensors: print-head temperature, paper presence, adjustable sensors of black mark or translucent gap/hole (setting by software), cover open, external low paper
- Data Buffer: 16 Kb
- Flash Memory: 1 MB internal + 8 MB external (of which 4 MB available for user)
- RAM Memory: 128 Kb internal + 8 MB external
- Graphic Memory: "Drag&Drop" graphics and logo
- Drivers: Windows® (32/64 bit) - only on request WHQL and silent installation; Driver CUPS Linux (32/64 bit); Virtual COM (Linux or Windows® 32/64 bit); OPOS; Android™; iOS

- Software Tools: PrinterSet, CustomPowerTool, Status Monitor
- Tear-off
- Power supply (included with the printer)
- Dimensions: 185.9mm (L)x130mm (W)x118.9mm (H)
- Weight: 1.9 Kg

## ACCESSORIES

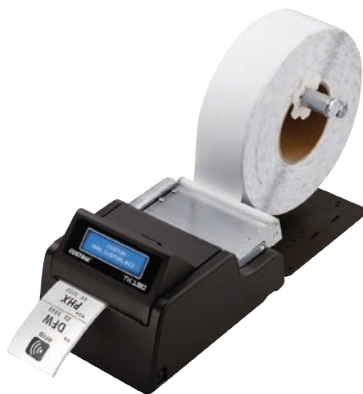
- Metal paper roll holder
- Serial adapter
- Serial cable
- USB cable
- Power cord EU
- Power cord UK

## AVAILABLE MODELS

- TK180
- TK180 RFID UHF Ready



TK180



TK180 RFID

# TK180 METAL

SMALL COMBINED PRINTER WITH HIGH RELIABILITY FEATURES



TK180



RFID



1D/2D BARCODES



## FEATURES

- Resolution: 203 dpi
- Printing speed: 200 mm/s
- Head life: 100 Km / 100 M pulses
- Supported Barcode: UPC-A, UPC-E, EAN13, EAN8, CODE39, ITF, CODABAR, CODE93, CODE128, CODE32, PDF417, DATAMATRIX, AZTEC, QRCODE
- Paper width: from 20 mm to 82.5 mm
- Paper weight: from 70 to 255 g/m<sup>2</sup>
- Paper thickness: max. 270 µm
- Roll dimension: 200 mm external diameter, 25 mm internal core or fan-fold
- Emulation: CUSTOM/POS, SVELTA
- Interfaces: RS232 / USB / ETHERNET
- Sensors: print-head temperature, paper presence, adjustable sensors of black mark or translucent gap/hole (setting by software), cover open, external low paper, cutter home (version with cutter)
- Data Buffer: 16 Kb
- Flash Memory: 1 MB internal + 8 MB external (of which 4 MB available for user)
- RAM Memory: 128 Kb internal + 8 MB external
- Graphic Memory: "Drag&Drop" graphics and logo
- Drivers: Windows® (32/64 bit); Driver CUPS Linux (32/64 bit); Virtual COM (Linux or Windows 32/64 bit); OPOS; Android™; iOS; WHQL Windows silent installer (only on request)

- Software Tools: PrinterSet, CustomPowerTool, Status Monitor
- Cutter life 1 million cuts; Total cut or tear-off
- 24V Power supply (included with the printer)
- Dimensions: 122.6 mm (L) x 145.6 mm (W) x 85 mm (H)
- Weight: 2.2 Kg

## ACCESSORIES

- Metal paper roll holder
- Serial adapter
- Serial cable
- USB cable
- Power cord EU
- Power cord UK

## AVAILABLE MODELS

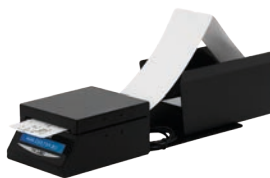
- TK180
- TK180 Cutter
- TK180 Cutter RFID UHF Ready



TK180 RFID



TK180 CUTTER RFID



TK180 METAL CUTTER  
REAR DRAWER



TK180 METAL CUTTER  
TRAY



# TK202III

ROBUST TICKET PRINTER



1D/2D BARCODES



## FEATURES

- Resolution: 203 dpi
- Printing speed: 200 mm/s
- Head life: 100 Km / 100 M pulses
- Supported Barcode: UPC-A, UPC-E, EAN13, EAN8, CODE39, ITF, CODABAR, CODE93, CODE128, CODE32, PDF417, DATAMATRIX, AZTEC, QR CODE
- Paper width: from 20 mm to 82.5 mm
- Paper weight: from 80 to 255 g/m<sup>2</sup>
- Roll dimension: 100 mm (up to 300 mm) or fan-fold
- Emulation: CUSTOM/POS, SVELTA
- Interfaces: RS232 + USB
- Sensors: fully adjustable lower and upper optical sensor, to suit any ticket width. Ticket presence sensor, ticket output, print-head temperature
- Drivers: Windows® (32/64 bit) - only on request WHQL and silent installation; Driver CUPS Linux (32/64 bit); Virtual COM (Linux or Windows® 32/64 bit); OPOS; Android™; iOS
- Software Tools: PrinterSet, CustomPowerTool, Status Monitor

- Tear-off
- Power supply (included with the printer)
- Dimensions: 252.1 mm (L) x 216 mm (W) x 192.6 mm (H)
- Weight: 4 Kg

## ACCESSORIES

- Metal paper roll holder
- Exit ticket tray
- Serial cable
- USB cable
- Power cord EU
- Power cord UK

## AVAILABLE MODELS

- TK202III



TK202III WITH ROLL HOLDER



TK202III WITH REAR TRAY

# TK302III

ROBUST TICKET PRINTER WITH CUTTER



RFID



1D/2D BARCODES



## FEATURES

- Resolution: 203 dpi
- Printing speed: 200 mm/s
- Head life: 100 Km / 100 M pulses
- Supported Barcode: UPC-A, UPC-E, EAN13, EAN8, CODE39, ITF, CODABAR, CODE93, CODE128, CODE32, PDF417, DATAMATRIX, AZTEC, QR CODE
- Paper width: from 20 mm to 82.5 mm
- Paper weight: from 80 to 255 g/m<sup>2</sup>
- Roll dimension: 100 mm (up to 300 mm) or fan-fold
- Emulation: CUSTOM/POS, SVELTA
- Interfaces: RS232 / USB / ETHERNET
- Sensors: fully adjustable lower and upper black mark/ gap optical sensor, to suit any ticket width, ticket presence sensor; ticket output, print-head temperature, cutter home
- Drivers: Windows® (32/64 bit) only on request WHQL and silent installation; Driver CUPS Linux (32/64 bit); Virtual COM (Linux o Windows® 32/64 bit); OPOS; Android™; iOS
- Software Tools: PrinterSet, CustomPowerTool, Status Monitor

- Cutter life 1.5 million cuts; Total cut
- Power supply (included with the printer)
- Dimensions: 252.1 mm (L) x 216 mm (W) x 192.6 mm (H)
- Weight: 4 Kg

## ACCESSORIES

- Metal paper roll holder
- Exit ticket tray
- RFID UHF KIT
- RFID HF KIT
- Serial cable
- USB cable
- Power cord EU
- Power cord UK

## AVAILABLE MODELS

- TK302III



TK302III VERTICAL STACKER



TK302III TRIPLE FEEDER



TK302III RFID



# TK862

TICKET PRINTER WITH INNOVATIVE INTEGRATED CIS



RFID



1D/2D BARCODES



## FEATURES

- Media up to 86 mm; internal CIS for alignment, stock control; VeriPrint® optional
- Resolution: 203 dpi
- Printing speed: 220 mm/s (high speed)
- Head life: 100 Km / 100 M pulses
- Supported Barcode: UPC-A, UPC-E, EAN13, EAN8, CODE39, ITF, CODABAR, CODE93, CODE128, CODE32, PDF417, DATAMATRIX, AZTEC, QR CODE, GS1 Databar
- Paper width: from 40 mm to 86 mm
- Paper weight: from 70 to 255 g/m<sup>2</sup> (Dual feeder from 100 to 255 g/m<sup>2</sup>)
- Roll dimension: max. 300 mm (dual feeder max. 150 mm) or fan-fold
- Emulation: CUSTOM/POS, SVELTA
- Interfaces: RS232 / USB / ETHERNET
- Sensors: paper presence, paper on output, front and upper cover open, print-head temperature, dual feeder paper input (only dual feeder models), CIS reader, CIS thermal side (only for VeriPrint® version), cutter home
- Drivers: Windows® (32/64 bit); Driver CUPS Linux (32/64 bit); Virtual COM (Linux or Windows 32/64 bit); Android™; WHQL Windows silent installer (only on request)
- Software Tools: PrinterSet, CustomPowerTool, Status Monitor

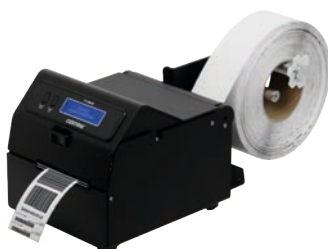
- Cutter life 1.5 million cuts; Total cut
- Power supply (included with the printer)
- Dimensions:
  - 216 mm (L) x 170 mm (W) x 173 mm (H) (standard model)
  - 223 mm (L) x 170 mm (W) x 173 mm (H) (model with ejector)
  - 246 mm (L) x 170 mm (W) x 173 mm (H) (model with dual feeder)
- Weight: 4.85 Kg (standard model)  
5 Kg (model with ejector)  
6.1 Kg (model with dual feeder)

## ACCESSORIES

- Roll holder
- Vertical ticket tray
- Kit RFID UHF
- Barcode stock control activation
- Power cord

## AVAILABLE MODELS

- TK862
- TK862 Dual feeder
- TK862 with Ejector
- TK862 RFID HF
- TK862 VeriPrint®



TK862 RFID



TK862



TK862 DUAL FEEDER

# TK306

LED 3" COLOR LABEL AND TICKET PRINTER



LED DRY  
TONER



COLOR  
PRINTING



DPI  
PHOTOGRAPHIC  
PRINT QUALITY



ECO FRIENDLY



LONG LIFE  
CUTTER



1D/2D BARCODES



## FEATURES

- Prints on regular paper (not thermal)  
Can print labels and synthetic material (polyester)
- Resolution: 1200 dpi or 600 dpi (SW setting)
- Printing speed: up to 150 mm/s
- Supported Barcode: 1D and 2D via driver
- Paper width: 25 - 86 mm
- Paper thickness: Auto feeder : 80 to 250µm  
Cut sheet : 60 to 250µm
- Roll dimension: max. 250 mm or fan-fold
- Emulation: graphic driver
- Interfaces: USB 2.0 HS, Ethernet 10/100
- Sensors: paper out, black mark/hole sensor, cover open, toner lid open, input cover open
- Drivers: Windows® (32/64 bit)
- Software Tools: Configuration Tool TK306
- Cutter life 1 million cuts; Total cut

- Power cord included
- Dimensions: 202 mm (L) × 381 mm (W) × 205 mm (H)
- Weight: 9.5 Kg

## ACCESSORIES

- Toner

## AVAILABLE MODELS

- TK306 EU (220Vac)
- TK306 USA (110Vac)





# SELF-SERVICE TICKET PRINTERS

KPM150HIII

KPM180H

KPM302III

KPM862

# KPM150HIII

COMPACT TICKET PRINTER FOR OEM INTEGRATION



1D/2D BARCODES



## FEATURES

- Resolution: 203 dpi, 8 dots/mm
- Printing speed: >180 mm/sec
- 1D and 2D barcode printing: UPC-A, UPC-E, EAN13, EAN8, CODE39, ITF, CODABAR, CODE93, CODE128, CODE32, PDF417, DATAMATRIX, AZTEC, QRCODE
- Paper width: from 20 mm to 54 mm
- Paper weight: from 80 to 180 g/m<sup>2</sup>
- Printing width: 54 mm
- Roll dimension: max. 200 mm
- Emulation: CUSTOM/POS, SVELTA
- Interfaces: RS232 / USB / VirtualCOM
- Sensors: head temperature, ticket presence, black mark detector in 3 position, translucent gap/hole detector (setting by software), ticket presence on output, cover open, external low paper
- Data Buffer: 64 Kb
- Flash Memory: 18 MB
- Graphic Memory: Logos dynamic management (max. 2 MB graphic memory)
- Drivers: Windows® (32/64 bit) - only on request WHQL and silent installation; Driver CUPS Linux (32/64 bit); Virtual COM (Linux or Windows® 32/64 bit); Android™; iOS
- Software Tools: Status Monitor, PrinterSet, CustomPowerTool, Custom Windows® API
- Cutter life 1 million cuts; Total cut
- Dimensions: 171 mm (L) x 114 mm (W) x 122 mm (H)  
194 mm (L) x 114 mm (W) x 122 mm (H) (with ejecter/retention ticket plastic kit)
- Weight: 1.85 Kg  
1.9 Kg (with cut/hold kit)  
1.95 Kg (with ejecter/retention ticket plastic kit)

## ACCESSORIES

- Kit Ejecter/ Retention ticket
- Power supply
- Paper roll holder



KPM150HIII WITH ROLL HOLDER  
AND KIT EJECTER/RETENTION TICKET



# KPM180H

COMPACT TICKET PRINTER FOR OEM INTEGRATION



RFID  
UHF



1D/2D BARCODES



Windows 10



## FEATURES

- The smallest printer on the market
- Resolution: 203 dpi, 8 dots/mm
- Printing speed: 200 mm/sec
- 1D and 2D barcode printing (PDF417, DATAMATRIX, AZTEC, QR CODE)
- Paper width: from 20 mm to 82.5 mm
- Paper weight: from 70 to 255 g/m<sup>2</sup>
- Paper thickness: max. 270 µm
- Printing width: 80 mm
- Roll dimension: 200 mm external diameter, 25 mm internal core, not coupled to the role core
- Emulation: CUSTOM/POS, SVELTA
- Interfaces: RS232 / USB / Ethernet / VirtualCOM
- Sensors: Head temperature, paper presence, mobile detectors of black mark or translucent gap/hole (setting by software), cover open, external low paper
- Data Buffer: 16 Kb
- Flash Memory: 1 MB internal + 8 MB external (of which 4 MB available for user)
- RAM Memory: 128 Kb internal + 8 MB external
- Graphic Memory: "Drag&Drop" graphics and logo
- Drivers: Windows® (32/64 bit) - only on request WHQL and silent installation; Driver CUPS Linux (32/64 bit); Virtual COM (Linux or Windows® 32/64 bit); OPOS; Android™; iOS
- Software Tools: PrinterSet, CustomPowerTool, Status Monitor, EthLocator, Custom Windows API
- Tear-off or cutter (1 Million cuts)

- Hot swap function
- Automatic ticket ejector (optional)
- SNAP-IN power supply connector and ON/OFF button
- Back connections, feed and print buttons, both at the front and back
- Dimensions:
  - 97.5 mm (L) x 108 mm (W) x 67 mm (H) (standard version)
  - 149.5 mm (L) x 108 mm (W) x 67.5 mm (H) (cutter presenter version)
  - 234.7 mm (L) x 114 mm (W) x 67.5 mm (H) (cutter presenter RFID version)
- Weight:
  - 0.8 Kg (standard version)
  - 1.5 Kg (cutter presenter version)
  - 1.78 Kg (cutter presenter RFID version)

## ACCESSORIES

- UHF RFID module
- Pretensioner kit
- Cutter ejector module

## AVAILABLE MODELS

- KPM180H Tear Off
- KPM180H Cutter / Ejector
- KPM180H Cutter / Ejector + RFID UHF



KPM180H TEAR-OFF



KPM180H RFID

# KPM302III

RFID TICKET PRINTER FOR OEM INTEGRATION



RFID



1D/2D BARCODES



## FEATURES

- Resolution: 203 dpi (300 dpi optional), 8 dots/mm
- Printing speed: 200 mm/sec
- 1D/2D barcodes printing capability (PDF417, DATAMATRIX, AZTEC, QR CODE)
- Paper width: from 20 mm to 82.5 mm
- Paper weight: from 80 to 255 g/m<sup>2</sup>
- Paper thickness: max. 280 µm
- Printing width: 80 mm
- Roll dimension: max. 300 mm
- Emulation: CUSTOM/POS, SVELTA
- Interfaces: RS232 / USB / Ethernet / VirtualCOM
- Sensors: head temperature, paper presence, paper presence in exit, mobile detector of notch or translucent gap/hole, upper and frontal cover open, external near paper end (optional)
- Data Buffer: 64 Kb
- Flash Memory: 16 MB
- Graphic Memory: Dynamic logo management (max. 2 MB graphic memory)
- Memory card SD: Capacity max. 2 GB
- Drivers: Windows® (32/64 bit) - only on request WHQL and silent installation; Driver CUPS Linux (32/64 bit); Virtual COM (Linux or Windows® 32/64 bit); OPOS; Android™; iOS
- Software Tools: PrinterSet, CustomPowerTool, Status Monitor, EasyMyfare, EthLocator, Custom Windows® API
- Cutter life 1.5 million cuts; Total cut
- Automatic email sending for service purpose
- Remote logo and font uploading (True Font)
- Dimensions:
  - 191 mm (L) x 160 mm (W) x 123 mm (H) (standard version)
  - 212.7 mm (L) x 160 mm (W) x 123 mm (H) (ejector version)
  - 272.2 mm (L) x 160 mm (W) x 123 mm (H) (selector + version)
  - 307.5 mm (L) x 168 mm (W) x 123 mm (H) (triple feeder version)

- Weight:
  - 3.5 Kg (standard, ejector, selector version)
  - 5.2 Kg (triple feeder, triple feeder + ejector, triple feeder + selector version)

## ACCESSORIES

- UHF RFID module
- HF RFID module
- Ejector device
- Selector device for horizontal fixing
- Selector device for vertical fixing
- Cut & Hold kit

## OPTIONAL

- 300 dpi version
- RFID version: multiple SAM management
- Triple paper stock feeder to manage three different rolls or fan-fold (3 lines version)
- Internal barcode scanner optimal for stock validation and fraud prevention
- Fan-fold paper support (front and back)
- Front ejector
- Burster kit / autocutter / tear-off all selectable by the user

## AVAILABLE MODELS

- KPM302III



# KPM862

RFID TICKET PRINTER FOR OEM INTEGRATION



RFID



1D/2D BARCODES



STOCK CONTROL



## FEATURES

- Resolution: 203 dpi, 8 dots/mm
- Printing speed: 220 mm/sec
- 1D and 2D: UPC-A, UPC-E, EAN13, EAN8, CODE39, ITF, CODABAR, CODE93, CODE128, CODE32, PDF417, DATAMATRIX, AZTEC, QRCODE, GS1 Databar
- Paper width: from 40 mm to 86 mm
- Paper weight: from 70 to 255 g/m<sup>2</sup>
- Paper thickness: max. 280 µm
- Printing width: 80 mm
- Roll dimension: max. 300 mm
- Emulation: CUSTOM/POS, SVELTA
- Interfaces: RS232 / USB / Ethernet / VirtualCOM
- Sensors: head temperature, paper presence, paper presence in exit, upper and frontal cover open, external near paper end (optional), CIS for notch/gap detection and “stock control” reading
- Flash Memory: 2 MB (+ 8 MB external)
- RAM Memory: 640 KB (+ 8 MB external)
- Drivers: Windows® (32/64 bit) - only on request WHQL and silent installation; Driver CUPS Linux (32/64 bit); Virtual COM (Linux or Windows® 32/64 bit); Android™
- Software Tools: PrinterSet, CustomPowerTool, Status Monitor, EasyMyfare, EthLocator, Custom Windows API
- Weight: 2.15 Kg (standard model); 3.55 Kg (model with ejector and dual feeder)

- Dimensions:
  - 163.8 mm (L) x 152.5 mm (W) x 96.5 mm (H) (standard version)
  - 182.9 mm (L) x 152.5 mm (W) x 96.5 mm (H) (ejector version)
  - 241.6 mm (L) x 152.5 mm (W) x 96.5 mm (H) (selector version)
  - 240.9 mm (L) x 155.5 mm (W) x 96.5 mm (H) (dual feeder version)

## ACCESSORIES

- Ejector
- Horizontal/ Vertical Selector
- HF RFID module
- Near Paper End kit
- Power supply / Power cord
- Stock control activation license (also to scan barcodes with VeriPrint®)

## AVAILABLE MODELS

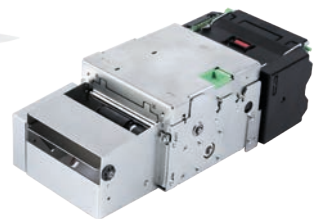
- KPM862
- KPM862 Dual Feeder
- KPM862 RFID HF
- KPM862 VeriPrint®



KPM862 FRONT EJECTOR



KPM862 DUAL FEEDER



KPM862 SELECTOR + EJECTOR



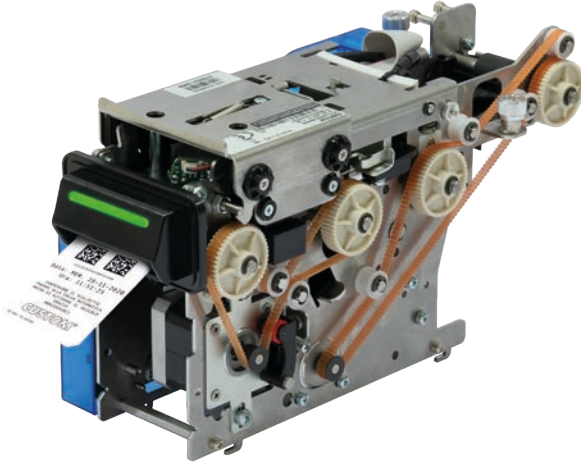
# PARKING, TRANSPORTS AND ACCESS CONTROL SYSTEMS

PP54 EVO



# PP54 EVO

THE MOST INNOVATIVE PARKING, TRANSPORT AND ACCESS CONTROL SYSTEM ENGINE



STURDY/  
HEAVY DUTY



STANDARD ISO  
TICKET MANAGEMENT



EASY  
MAINTENANCE



300  
DPI



1D/2D BARCODES



INTERNAL  
SCANNER



## FEATURES

- Resolution: 304 dpi, 12 dots/mm
- Printing speed: 150 mm/sec
- 1D & 2D Barcode Print & Read capability, Aztec, DataMatrix, PDF417, QR CODE
- Paper weight: from 140 g/m<sup>2</sup> to 210 g/m<sup>2</sup>
- Paper thickness: from 140 to 230 µm
- Printing width: 50 mm
- Emulation: CUSTOM/POS
- Interfaces: RS232 / Ethernet / optional USB
- Sensors: Head temperature, paper in, paper out, cover open, 4 internal sensor for ticket management, external near paper end (optional)
- Data Buffer: 16 Kb
- Flash Memory: 2 MB internal + 8 MB external (of which 4 MB available for user)
- RAM Memory: 512 Kb internal + 8 MB external
- Drivers: Windows® (32/64 bit) - only on request WHQL and silent installation
- Software Tools: PrinterSet, CustomPowerTool, SDK package with demo software and complete library documentation
- Cutter (1 Million cuts)
- ISO7811 ticket HD full graphic printing/scanning capability (300 dpi)
- High-End, breakthrough and unique technology worldwide
- Mono/Bi-lateral internal scanner for 2D Barcodes reading
- HF RFID Chip-On-Paper management

- Simultaneous management up to 3 tickets
- Reading/Printing ticket inserted by user and operate external device with I/O board
- Ticket ejecting/retracting/collecting
- Heavy outdoor conditions
- RGB led on paper mouth
- Plastic card management
- Input Feeder is included
- Dimensions: 270 mm (L) x 105 mm (W) x 146 mm (H)
- Weight: 3 Kg

## ACCESSORIES

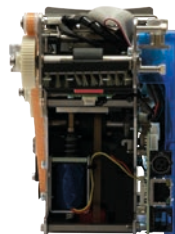
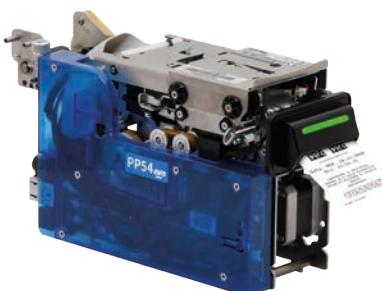
- Input/Output Board Kit
- USB Board kit
- External Display Kit
- Low Paper Sensor Board

## OPTIONAL

- Multiple interfaces Ethernet - RS232 - USB
- Near paper end sensor
- External display

## AVAILABLE MODELS

- PP54 EVO 1-CIS
- PP54 EVO 1-Feeder 1-CIS
- PP54 EVO 1-CIS RFID HF
- PP54 EVO 1-Feeder 1-CIS RFID HF
- PP54 EVO 2-CIS
- PP54 EVO 1-Feeder 2-CIS RFID HF





# RECEIPT PRINTERS

MODUS3 X / VKP80III

# MODUS3 X

SMALL FOOTPRINT KIOSK PRINTER



1D/2D BARCODES



FULL STATUS  
MONITOR



SDK and APP available

## FEATURES

- Resolution: 203 dpi, 8 dots/mm
- Printing speed: 200 mm/sec
- 1D and 2D barcode printing (PDF417, DATAMATRIX, AZTEC, QR CODE)
- Paper width: from 54 or 82.5 mm
- Paper thickness: 63µm to 120µm
- Roll dimension: 120 mm; up to 160 mm (180 mm possible) with optional pretensioner
- Interfaces: RS232, USB 2.0, Virtual COM
- Sensors: Paper input / Printhead temperature / Cover closing / Black mark on non-thermal left side / Anti-jam (presenter model only, optional for standard model) / Ticket output (optional on standard model), and near paper end (optional)
- Software Tools: PrinterSet, CustomPowerTool, Status Monitor, Custom Windows API
- Cutter (1 Million cuts)
- Dimensions: 116 mm (L) x 51 mm (W) x 62 mm (H)  
116 mm (L) x 96 mm (W) x 62 mm (H) (with presenter)

- Weight: 400 g / 614 g (with presenter)

## ACCESSORIES

- Pretensioner for handling large rolls (diameter up to 160 mm)
- Roll holder with multiple paper position and right/left side fastening up to 80 mm (NPE sensor not included)
- Standard roll holder up to 80mm (NPE sensor not included)
- Paper outfeed with anti-jam sensor and ticket output sensor
- Near paper end sensor
- Serial cable with paper feed button and status led
- Power supply and cables

## AVAILABLE MODELS

- MODUS3 X USB RS232 COMPACT
- MODUS3 X USB RS232 WITH PRESENTER

# VKP80III

TOP SELLER KIOSK PRINTER WITH A UNIQUE GREEN PAPER MOUTH



1D/2D BARCODES



FULL STATUS  
MONITOR



GREYSCALE  
PRINTING



SHUTTER/  
RETRACT



SDK and APP available

## FEATURES

- Resolution: 203 dpi, 8 dots/mm
- Printing speed: 250 mm/sec
- 1D and 2D barcode printing (PDF417, DATAMATRIX, AZTEC, QR CODE)
- Paper width: from 50 to 82.5 mm
- Paper weight: from 55 to 110 g/m<sup>2</sup>
- Roll dimension: max 150 mm (up to 250 mm with optional roll holder)
- Interfaces: RS232 (only for VKP80III SIDE CONN. and VKP80III REAR CONN.) USB Ethernet (only for VKP80III ETH SIDE CONN.)
- Sensors: Paper end (paper presence), paper output, printer cover open, near paper end on external paper roll holder, printing head temperature; VeriNotch: mobile notch/black mark sensor, on non thermal side; Extra cable for the paper near end sensor, it can be used when the paper roll holder is installed 90° on the right side
- Software Tools: PrinterSet, CustomPowerTool, Status Monitor, Custom Windows API Cutter (1 Million cuts)
- Hot swap function / Print head self-diagnostic function / Digital journal printer

- Patented retracting function w/o ticket presentation / Patented anti-jam system with jamming autodetection and auto eject retry
- Dimensions: 143.5 mm (L) x 116 mm (W) x 76.4 mm (H)
- Weight: 0,8 Kg

## ACCESSORIES

- Shutter for outdoor
- Roll holder (NPE included)
- TOP-NOTCH sensor: reads notches or black marks on the upper thermal side, both in the left and right angles
- Jumbo roll holder kit (diameter up to 250 mm) with near paper end sensor and pretensioner
- Near paper end sensor

## AVAILABLE MODELS

- VKP80III ETH USB SIDE CONNECTORS
- VKP80III USB RS232 REAR CONN.
- VKP80III USB RS232 SIDE CONN.





# HANDHELD COMPUTERS

P-RANGER  
K-RANGER



# P-RANGER

RUGGED PALM COMPUTER



Single cradle

Pistol grip



Protective silicone cover

Vehicle cradle



4-Position cradle



FINGERPRINT



BATTERY



NFC



4G



STURDY/  
HEAVY DUTY



SCANNER

IP67

IP67  
PROTECTION



ANTI-SHOCK

## FEATURES

- Operating system: Android™ 7.0 / Android™ 9.0 only for RP310 / Android™ 10 for RP310 A10
- 8.0 Mpx rear camera
- Display: 5" 1280 × 720 HD AGC Dragontrail
- NFC
- Protection: IP67
- Network: GSM/3G/4G
- Dual SIM card (two micro-SIM cards + one microSD card)
- Navigation: GPS, GLONASS, BEIDOU
- Battery: 4000 mAh
- Version without fingerprint (RP310)
- Fingerprint version: up to 5 memorized fingerprints (RP340)
- Scanner version 1D/2D (RP300/RP340/RP310)
- Drop resistance: 122 cm
- Dimensions: 76 mm (L) × 165 mm (W) × 15.6 mm (H)
- Weight (without battery):
  - RP100: 177 g
  - RP310/RP310 A10: 186 g
  - RP340: 189 g

## ACCESSORIES

- Single cradle
- 4-Position cradle
- Vehicle cradle
- Extended battery: 8000 mAh (with dedicated battery cover)
- Pistol grip
- Tempered glass protector
- Protective silicone cover
- Battery charger for car

android 

 SOTI MOBICONTROL

# K-RANGER

PALM COMPUTER WITH KEYBOARD



SnapOn with USB charging bay



Single cradle



Pistol grip



4 slots cradle



BATTERY



4G



STURDY/  
HEAVY DUTY



SCANNER



KEYBOARD



LONG RANGE  
READING



TOUCHSCREEN



ANTI-SHOCK

## FEATURES

- Operating system: Android™ 9.0
- 8.0 Mpx rear camera
- Display: 4" LCD TFT with 800 × 480 resolution, projected capacitive, multi-touch screen
- Protection: IP65
- Network: WWAN, WLAN, WPAN (BT), USB 2.0 (high speed), OTG support
- Nano SIM
- Navigation: GPS, GLONASS, BEIDOU
- 1D/2D (standard and long range code)
- 38-key keyboard + alphanumeric
- Battery: 5200 mAh
- 12V 2A Power supply
- Pistol version with practical handle (Pistol Grip for KR500-G and KR550-G model)
- Drop resistance: 155 cm
- Dimensions: 77.8 mm (L) × 202.4 mm (W) × 41.6 mm (H)
- Weight (without battery):
  - KR500-G: 314 g
  - KR550-G: 349 g

## ACCESSORIES

- Single cradle
- 4-Position cradle
- Vehicle cradle
- Standard replacement battery
- Pistol grip
- Protective silicone cover
- SnapOn with USB charging bay
- Mobility truck kit with set of travel cables

android 

 SOTI MOBICONTROL



# SCANNING AND IMAGE SYSTEMS

KBR2D  
A4 SCANNER / A6 SCANNER

# KBR2D

## KIOSK BARCODE READER



1D/2D BARCODES



READING FROM  
SMARTPHONES



OUTDOOR  
USE

### FEATURES

- Field of view: Horizontal - 55°, Vertical - 35°
- Scan rate: 60 fps (at full resolution)
- Reading distance: from 3 to 28 cm
- Ambient light: works in any lighting conditions from 0 to 100,000 lux
- Roll: 360°
- Indicator: good read beep
- Interfaces: KBR2D-C: USB-HID (or Virtual COM port); KBR2D: RS232/USB-HID (or Virtual COM port)

- Power supply: DC+5V±5%
- Dimensions: 56 mm (L) x 69 mm (W) x 28 mm (H) (KBR2D-C)
- 38.85 mm (L) x 23.50 mm (W) x 5.20 mm (H) (KBR2D)

### AVAILABLE MODELS

- KBR2D-C
- KBR2D

# A4 SCANNER

## A4 FRONT/REAR COLOR SCANNER



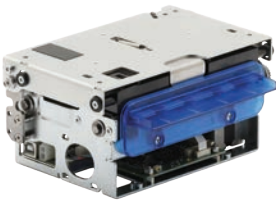
### FEATURES

- Scanner Type: Contact Image Sensor (CIS)
- Scanning speed: max. 400 mm/s (300 dpi B/W)
- Scan Length: min. 70 mm max. 1000 mm
- Scan width: 217.4 mm
- Scanning resolution: 200 dpi, 300 dpi, 600 dpi
- SW integration through evolved SDK library: CuDoubleSidedScannerAPI for Win32 and .NET
- Interfaces: USB 5 Gbit/s (USB 3.1)
- Power supply: from 12 Vdc to 24 Vdc ±10%
- Front and rear scanning
- Sturdy: full metal body
- Color (RGB) - Greyscale - Black and White
- Sensor for detection of jam/blocked sheet (internal encoder)

- Document alignment system in entrance (deskew)
- Fully inspectionable for easy cleaning and maintenance
- Retract or eject
- Front paper mouth with RGB led
- Dimensions: 274 mm (L) x 127.4 mm (W) x 77 mm (H)
- Weight: 1 Kg

### AVAILABLE MODELS

- A4 F/R color scanner
- A4 F/R color scanner with double sheet sensor



# A6 SCANNER

## A6 DOCUMENT AND CHECK COLOR SCANNER

### FEATURES

- Scanner Type: Contact Image Sensor (CIS)
- Scanning speed: max. 400 mm/s (300 dpi B/W)
- Scan Length: min. 70 mm max. 3000 mm
- Scan width: 108 mm
- Scanning resolution: 100 dpi, 150 dpi, 200 dpi, 250 dpi, 300 dpi
- SW integration through evolved SDK library: CuDoubleSidedScannerAPI for Win32 and .NET
- Interfaces: USB port 480 Mbit/s (USB 2.0)
- Power supply: from 24 Vdc ±10%
- Front and rear scanning
- Sturdy: full metal body
- Color (RGB) - Greyscale - Black and White
- Sensor for detection of jam/blocked sheet (internal encoder)

- Document alignment system in entrance (deskew)
- Fully inspectionable for easy cleaning and maintenance
- Retract or eject
- Front paper mouth with RGB led
- Dimensions: 115 mm (L) x 166.5 mm (W) x 76.1 mm (H)
- Weight: 1 Kg

### AVAILABLE MODELS

- A6 scanner with CMC7 MICR reading
- A6 scanner with double sheet sensor





# SPECIAL PRODUCTS AND ACCESSORIES

POS ACCESSORIES

APP / MICROPLAYER / MICROPLAYER4K

MATE UP

CASH KIOSK

# POS ACCESSORIES

## MONITOR TOUCH 15"



MT15

## CUSTOMER DISPLAY



QD2

## BARCODE SCANNERS



SCANMATIC

## PC POS



DAYTONA



SILK

## DRAWERS



LARGE METAL DRAWER  
Dimensions: 410 x 100 x 415 mm



METAL DRAWER  
Dimensions: 330 x 90 x 330 mm



# APP

Tailored applications, both Android™ and iOS.  
Possibility to create any type of functionality and customization: database integration, push notifications, QR code download, geolocation, news, reserved areas and contactless payments.



# MICROPLAYER

HDMI MULTIMEDIA PLAYER

- Ultra-compact
- Easy to install
- Possibility of wall-fixing
- Reliable: 24 hrs/day
- Ready to use: auto turning on and turning off
- Stand alone mode: server not needed
- Fanless
- Low consumption
- Dimensions: 130 mm (L) x 143 mm (W) x 31 mm (H)



# MICROPLAYER 4K

HDMI MULTIMEDIA PLAYER

- Media store: 4GB+SSD 128GB
- Resolution: 4K
- Wall-mount fixing
- Reliable: 24hrs/day
- Ready to use: auto turning on and turning off
- Stand alone mode: server not needed
- Fanless
- Low consumption
- Dimensions: 128 mm (L) x 191 mm (W) x 43.5 mm (H)



**VIDEO**  
MPG2  
MPG4  
DVIX



**PHOTO**  
JPEG  
PNG  
TIF  
BMP



**MUSIC**  
MP3  
WAV  
WMA



**WEB**  
WEB PAGES  
STREAMING



# MATE UP

## SELF-SERVICE KIOSK

Mate Up is the complete kiosk for ordering and paying in total autonomy and without contact.

The self-service solution that integrates software and hardware entirely Made in Italy with direct contact for technical assistance on software, hardware and spare parts.

Mate Up offers various advantages such as distance and no contact, with a reduction in the queue at the checkout and consequent flexibility and rationalization of resources. It also allows new customers to be intercepted and satisfied with a new service.

### FEATURES

- Frame in galvanized sheet metal with variable thicknesses
- 21.5" Monitor with widescreen display 16:9
- Anti-vandal retro-projected capacitive touch screen
- Embedded KBR2D-C Custom barcode scanner
- More peripherals connected to the kiosk
- Dimensions: 560 mm (L) x 430 mm (W) x 1476 mm (H)

### AVAILABLE MODELS

- Kiosk Mate Up
- Kiosk Mate Android™
- Kiosk Mate Windows® 10

### ACCESSORIES

- Custom printer preparation kit
- Wheel kit for Kiosk Mate
- Feet kit for Kiosk Mate



1D/2D BARCODES



PROJECTED CAPACITIVE



# CASH KIOSK

## SELF-SERVICE KIOSK

### FEATURES

- From 21,5" to 32" TOUCH PCAP
- Quad-Core ARM - Rockchip RK3288
- Linux / Windows® IoT / Android™
- Memory RAM: 2GB/8GB
- Storage: 32/128GB SSD
- High Performance barcode scanner able to read in low light conditions
- Unattended or desktop payment systems
- Receipt printers: It is possible to install Kiosk printers with antijam solution or desktop fiscal and no-fiscal printers
- Display: 32"
- Side LEDs for illumination and message to the user
- Optional WebCam and audio kit
- Possibility of wall or pedestal installation

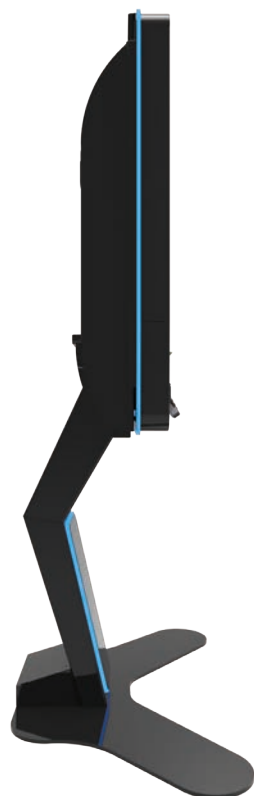


1D/2D BARCODES



PROJECTED  
CAPACITIVE

Windows 10





# DIGITAL SECURITY

VERIPRINT®

# VERIPRINT®

PREVENT FRAUD WITH INNOVATIVE CUSTOM TECHNOLOGY

The Veriprint® system, while printing a ticket, saves in real time a digital image of the issued ticket. This image can be saved inside the printer in a mass memory (MMC, SD) or it can be sent to the remote host. The image can also be elaborated by the printer to verify if it has been correctly printed.



## FEATURES

---

- Electronic copy of the ticket compliant with the original one
- Automatic storage of all the images of the ticket in local or central database
- Direct access to image folders from embedded web browser
- System protection against fake tickets
- Original ticket image's retrieval for checking
- Automatic check of the correct printing of the barcode
- Maximum safety and consequent reduction of costs and claims
- Detection of hardware components needing maintenance (broken printing head), TCO reduction







15



14

# SPECIAL SOLUTIONS AND OPTIONS

RFID / MULTI BIN



# RFID

## RFID TECHNOLOGY

### FEATURES

- Easy to integrate in SW platforms: same printing module for the OFFICE and for the KIOSK
- Multi tickets support: multifeeders available for handling RFID tickets and standard paper
- Higher security in less space: built-in 3 SAM management
- Low ownership cost: high MTBF



### HF - SHORT DISTANCE

### UHF - LONG DISTANCE

#### SUPPORTED STANDARDS

- MIFARE
- ISO 14443A (MIFARE 1K, 4K and Ultralight)
- ISO 15693
- i-Code
- ISO 14443B
- Calypso, FeliCa
- other minor RFID standards

- UHF - Long distance
- ETSI standard, fully compliant to the European Regulation ETSI EN 302 280 (869.525 MHz)
- FCC standard, fully compliant to the US telecommunication regulation FCC part 15 (902-928 MHz)
- ISO 18000-6B
- Philips UCODE EPC 1.19
- EPC Class1 Gen2 / ISO 18000-6C

#### APPLICATIONS

- Transportation
- Payment
- Identification and management of documents (for archives and libraries) and people (patients in hospital)
- Toll roads and parking

- Aviation: bag tags
- Logistics: labelling
- Medical: wristbands
- Events: tickets / wristbands

# MULTI BIN

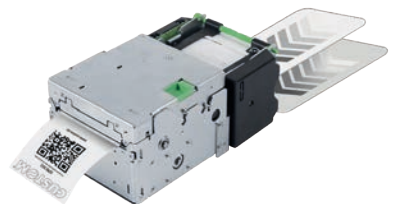
## TRIPLE PAPER STOCK BIN TO MANAGE THREE KIND OF TICKETS

### FEATURES

- Increasing paper capability
- Flexibility of offered services
- Saving space on the desk
- Saving space in the self-service kiosk

### TWO WORKING WAYS

- Single mode: it is possible to use the same kind of paper for the three paper loadings available
- Mixed mode: it is possible to use a mix of different paper. Reduced footprint trough a single printer instead of 2







**CUSTOM**®



**CUSTOM S.p.A.**

World Headquarters

Via Berettine, 2

43010 Fontevivo, **Parma** ITALY

Tel. +39 0521 680111 Fax +39 0521 610701

**info@custom.biz - www.custom.biz**