

DISCOVER RETAIL SOLUTIONS DESIGNED FOR DRIVING EXPERIENCE AND PRODUCTIVITY

START THE JOURNEY

Honeywell



OUR MISSION

Honeywell is committed to empowering retailers to evolve their operations with assistive technology, intelligent data and optimization software to drive end-to-end productivity. Our goal is to help retailers enhance customer and associate experiences throughout the retail environment through digital enablement, leading to more achievable and sustainable growth.

30+ YEARS RETAIL EXPERTISE

Honeywell's unique portfolio of business intelligence software and labor productivity tools have been a driving force throughout worldwide retailers for more than 30 years, building on leading brands and technologies. Honeywell retail solutions are fit-for-purpose in a wide variety of retail workflows, and demanding operations that need to transition their manual workforce to more automated, modern processes. Our flexible solutions unify workers to increase productivity, accuracy and efficiency while greatly improving their overall job satisfaction.

Our focus is helping retailers address today's most critical needs to prepare for the future allowing you to focus on what really matters: **Discovering Unified Commerce.**





PRIORITIES AND CHALLENGES FACING RETAILERS



CUSTOMER EXPERIENCE

Customer expectations have pushed retailers to become faster, more accurate, and more accountable for unified experiences regardless of where they shop. As a result, technologies designed to keep customers informed throughout the shopping process is a critical area for retailers to invest.



BETTER OPERATIONAL EFFICIENCY

Data-driven decisions is the path forward! Data provides the operational visibility to manage and streamline increasingly complex retail operations and respond to the ever growing eCommerce initiatives, increasing customer expectations, and labor shortages. Software that delivers in-depth analytics and actionable insights on assets, inventory and workflow performance can help increase operational efficiency.



WORKFORCE PERFORMANCE

Retail operations need to proactively remove barriers to productivity and minimize worker fatigue to help control costs and navigate widespread labor shortages. That's why retailers need to invest in innovative technology that helps them navigate turbulent waters.



HARNESSING INNOVATION AND AUTOMATION

Retail operations are preparing for the future and utilizing technologies that will continually improve the ever changing customer experience, cut costs and reduce labor demands. Technologies ranging from digitally-enabled associates, in-store automation and modernized software platforms through ML and AI are all making big impacts in the modern retail environment.



OPTIMIZE YOUR RETAIL OPERATION WITH HONEYWELL SOLUTIONS

With this, Honeywell gives you end-to-end technology solutions that easily connect your people, assets, and processes to drive greater customer service, productivity, agility, and efficiency throughout your entire retail enterprise.



RETAIL PRINTING

Retail brick-and-mortar locations continue to alter their processes to meet the need of the modern unified customer. Having the right tools in place to meet click and collect, ship from store, and buy online pickup in store is critical in driving accuracy and customer experience.

Explore Best Sellers for In-Store Printing:

- Industrial Printers
- Asset Intelligence

[< Back](#)



OUR MISSION

CHALLENGES

OPTIMIZING YOUR OPERATION

RETAIL BEST SELLERS

MOBILE COMPUTERS

WEARABLE TECHNOLOGY

SCANNERS

PRINTERS

SIGNATURE PLATFORMS

COLLABORATING WITH HONEYWELL



RETAIL BEST SELLERS

Honeywell is focused on delivering innovative retail solutions for our customers that drive end-to-end productivity. Our solutions help retailers manage large amounts of data while empowering associates to have instant access to organizational knowledge, streamlining and improving customer interactions. Our portfolio offers power handheld mobile computers, long-range barcode scanners, always-connected voice solutions, printers and software.

Explore the Portfolio 



MOBILE SOLUTIONS FOR MOBILE WORKERS

Honeywell’s mobility devices combine the advantages of consumer devices and high-end industrial mobile computers and tablets into a single rugged package. Our mobile computers are built to withstand the most challenging retail environments. They are sleek and lightweight devices that have power management advantages, ensuring that batteries will last up to two full shifts for those running on Mobility Edge™.

For mobile workers on the retail salesfloor, battery life is crucial because every second lost to swapping devices that need recharging represents lost productivity and impedes customer satisfaction.

ERROR-PROOF YOUR RETAIL ENTERPRISE WITH THE INDUSTRY’S MOST ADVANCED ULTRA-RUGGED MOBILE DEVICES READY FOR THE TOUGHEST ENVIRONMENTS.





MOBILITY

Handhelds



MOBILITY EDGE CT30XP

Built on the Mobility Edge platform, the CT30 XP combines the elegant design and usability of a high-end mobile phone without compromising the durability, manageability or business functionality serious businesses depend on. When combined with powerful Honeywell software such as Operational Intelligence, Smart Talk unified communications and Smart Pay contactless payment, the CT30 XP is an ideal platform upon which users in retail can build effective solutions.



POWER UP WITH:

8675i, Guided Work, Operational Intelligence, SRX3 Headset



MOBILITY EDGE CT45 XP

The CT45XP offers an integrated, repeatable, and scalable approach based on a common hardware and software Mobility Edge platform – achieving enterprise stability and security via incorporating a powerful Qualcomm processor that is guaranteed to support from Android 11® throughout Android 13, Android 14 and 15 are committed subject to feasibility.



POWER UP WITH:

8675i, Guided Work, Operational Intelligence, SRX3 Headset



MOBILITY EDGE CK65

Built on the Mobility Edge platform, the CK65 minimizes total cost of ownership like no other product on the market by future-proofing your investment with support through Android R (Android 11). Its ultra-rugged design can withstand 3-m (10 ft) drops to concrete; as well as being rated to IP65 and IP68, the CK65 is durable in even the toughest retail stockroom and distribution environments. The CK65 even offers cold storage models for freezer environments and nonincendive (NI)/ATEX models for areas with hazardous gases. It features 6803 scanner with dual lens capturing near, mid/far range with no moving parts.



POWER UP WITH:

Operational Intelligence



MOBILITY

Handhelds



SCANPAL EDA56

The Honeywell ScanPal™ EDA56 WLAN is a Wi-Fi 6 mobile computer that provides higher data rates and lower latency even in a densely connected environment. The EDA56's design is ideal for retail, manufacturing, logistics, and public service applications.



POWER UP WITH:

8675i, Guided Work, Operational Intelligence, SRX3 Headset

Tablets



SCANPAL EDA10A

The Honeywell ScanPal EDA10A tablet is a rugged yet lightweight solution for mobile business users who need fast, reliable mobile data access on a high-resolution, 10-inch screen. Featuring 5G cellular and Wi-Fi 6 communications, the EDA10A provides high-speed connectivity indoors and out for users in retail, logistics and field service.



POWER UP WITH:

8675i, Guided Work, Operational Intelligence, SRX3 Headset



MOBILITY EDGE RT10

The Honeywell RT10A rugged tablet is designed for rapid user adoption, minimized TCO and optimized device management. Whether you're a supervisor or a shop floor employee, a manager or a maintenance worker, the RT10A is ready to fit into your daily workflow.



POWER UP WITH:

The Granit™ XP 199Xi SR/XR/XLR

Wearable



MOBILITY EDGE CW45

Setting a new standard in hands-free productivity and performance for the frontline worker. Built on the Mobility Edge™ for longevity and with FlexRange scanning distances, CW45 is a powerhouse wearable computer helping empower workers to improve transaction speed and throughput.



POWER UP WITH:

8675i, Guided Work, Operational Intelligence, SRX3 Headset





WEARABLE TECHNOLOGY

In mobile workflows, less wasted movement produces greater efficiency. This is especially true for tasks like picking workflows, large package handling, sortation, truck loading and other common workflows in warehouse, and transportation and logistics operations. With Honeywell's variety of wearable solutions, there's no need for your mobile workers to find, pick up, and set down a handheld scanner. And with greater efficiency comes greater productivity, helping your business keep pace with demand, while reducing labor costs and improving customer service.





| WEARABLE TECHNOLOGY

Wearable Computer

Wearable Scanners



CW45

Setting a new standard in hands-free productivity and performance for the frontline worker. Built on the Mobility Edge platform for longevity and with FlexRange scanning distances, CW45 is a powerhouse wearable computer helping empower workers to improve transaction speed and throughput.



POWER UP WITH:

8675i, Guided Work, Operational Intelligence, SRX3 Headset



8675i

Fast and accurate tracking of goods is critical to efficient operation for order fulfillment and inventory management. With FlexRange scanning distances, 8675i enables wearable scanning in applications that would have previously required a handheld device.



POWER UP WITH:

CT30XP, CT45XP, CW45, Guided Work, Operational Intelligence



8680i

The 8680i Wearable Mini Mobile Computer is a cost-efficient solution driving enhanced productivity through a direct wireless connection to the host and interactive display.



POWER UP WITH:

CT30XP, CT45XP, CW45, Guided Work, Operational Intelligence



8690i

The Honeywell 8690i wearable device is a compact, high-performance, hands-free mini mobile computer for your business that will help you improve workflow efficiency and reduce costs. Industry-standard EPC Global Class 1 Gen 2, RFID reader ensures that the 8690i can read all common supply chain RFID tags.



POWER UP WITH:

CT30XP, CT45XP, CW45, Guided Work, Operational Intelligence



| WEARABLE TECHNOLOGY

Voice Automated Solutions

Voice Headsets



GUIDED WORK

Honeywell's Guided Work solutions flexible platform provides options from general purpose, purpose built or a hybrid of technologies. Voice software performs on Android, iOS and Honeywell foundational Talkman series.



SRX3 WIRELESS HEADSET

The SRX3 Wireless Headset features the next generation in Bluetooth® wireless headset technology – raising the standard in mobile workforce ergonomics, productivity and accuracy while enabling voice-directed workflow efficiencies. Superior speech-recognition technology and flexible configurations empower your mobile workforce to excel in a variety of industrial applications as well as demanding in-store picking, distribution and fulfillment environments.



POWER UP WITH:

CT30XP, CT45XP, CW45, Operational Intelligence





SCANNING SOLUTIONS FOR RETAIL DEMANDS

State-of-the-art scanning systems are a necessity for today's retail enterprise and their mobile workforce. Throughout Honeywell's years of innovation, we've developed a variety of scanners to meet your every retail need.

ULTRA-RELIABLE INDUSTRIAL AND WEARABLE SCANNERS.

Even in challenging working environments, you can trust our handheld, industrial-grade barcode scanners to provide superior durability and reliability. Our scanners are encased in waterproof and dustproof housings and rubberized to reduce damage from falls or tumbles, providing a long life cycle and low cost of ownership. Our scanners are perfect for fastpaced, high-volume barcode scanning.





SCANNERS

Industrial Scanners



THE GRANIT™ XP 199XI SR/XR/XLR

The Granit™ XP SR, XR, XLR handheld industrial scanners are designed to offer premium scanning performance and full range scanning depth to drive efficiency and reliability in mission-critical applications. Its high durability supports low TCO. The new Granit™ XLR is form-fit for a variety of workflow applications from no-sacrifice near field scanning to extreme long range scanning operations enhancing workflow productivity. Architecture provides industrial-grade scan performance for the Granit 1910i/1911i.



POWER UP WITH:

CT30XP, CT45XP, RT10, Operational Intelligence

Retail Scanners



XENON XP 19xx

The Honeywell Xenon Extreme Performance (XP) cordless 2D imagers. The Xenon XP 1952g offers a premium scan performance and easily capture even the most difficult-to-read or damaged barcodes. Engineered to 50 drops at 1.8 m (6 ft.) and 2,000 tumbles at 0.5 m (1.6 ft.), and with an IP41 ingress rating for water and dust, the Xenon XP 1952g and 1952h imagers deliver the reliability and durability that has driven Xenon to be the best selling 2D imager in the industry. This significantly reduces scanner downtime and service costs, leading to a longer lifecycle and a lower total cost of ownership.



POWER UP WITH:

CT30XP, CT45XP, RT10, Operational Intelligence



VOYAGER XP 14xx

The Voyager™ Extreme Performance (XP) cordless scanner delivers industry-leading scanning capability on traditional barcodes and digital screens – even on damaged and difficult-to-read codes. With better durability than any competitive scanner in its class – this scanner is a perfect option for workflows that include 1D and 2D barcode reading and require a more robust and reliable solution. The scanner’s extended scan distance will reach right to the bottom of the cart without the need to bend, wasting time at checkout.



POWER UP WITH:

CT30XP, CT45XP, RT10, Operational Intelligence



INDUSTRIAL SCANNERS

Presentation Scanner



GENESIS XP

The Genesis XP features 20% faster scanning speed and a larger scanning area than previous products. Honeywell's field proven XP scanning technology handles poorly printed and damaged barcodes with ease. Impressive depth of field allows barcodes to be read even if placed right at the face of the scanner. Featuring a full 1 mega-pixel imager and fast processor, the Genesis XP reads barcodes fast and handles a high level of motion tolerance resulting in fewer repeat scans, keeping employees productive and efficient.



POWER UP WITH:

CT30XP, CT45XP, RT10, Operational Intelligence

RFID Scanner



IH40 RFID READER

The IH40 RFID reader, combined with RFID tagging, offers an easier solution to keep track of high moving inventory with less effort. Retailers can count inventory in the store and warehouse 25 times faster than with barcodes, often in a matter of a few hours, enabling more frequent inventory updates and closer management of inventory levels. Easy to use and ergonomically balanced, when paired with a Honeywell mobile computer, the IH40 offers fast, accurate UHF RFID inventory capture and convenient, integrated 1D/2D barcode capability.



POWER UP WITH:

CT30XP, CT45XP





CONSISTENT SOLUTIONS FOR CONSISTENT WORKFLOWS

From desktop to industrial to mobile, Honeywell printers are the clear choice for a wide variety of labeling applications. The built-in “smarts” of our industrial printers mean greater efficiency and lower cost, with wired and wireless solutions for all high-demand printing needs. Our desktop printers are quiet, compact, intuitive and reliable– with a range of configurations designed to excel in your business environment. Our mobile printers are built to withstand punishing field conditions, enabling a full day of printing without recharging and maximizing printer uptime..



FIXED PRINTERS ARE YOUR TRUSTED ALLIES.



| PRINTERS

Mobile Printer



RPf

The RPf Series is a rugged and reliable direct thermal portable label printer that offers easy integrated device management, a high level of security throughout the entire printer lifespan, and upgrades that allow your printers to be updated with enhanced features in direct store delivery, field service, T&L, retail, and airline environments.



POWER UP WITH:
Operational Intelligence

Industrial Printer



PD45/PD45S

The PD45 is a commercial grade industrial printer, which is suited for manufacturing, transportation and logistics, and government applications. The PD45 is available with standard features such as smart printing capability, in which users can configure and finetune settings without the need for a host computer by running apps right inside the printer – minimizing the need to connect to a PC. With Honeywell print platform that supports multiple print languages, PD45 can be an effective alternative to the competing printers available in the market.

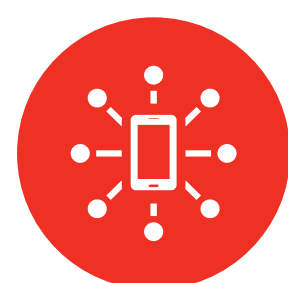


POWER UP WITH:
Operational Intelligence





OUR SIGNATURE PLATFORMS AND SOFTWARE FOR RETAIL



MOBILITY EDGE™

By definition, the Mobility Edge platform strengthens security, accelerates deployments, extends the life of your solution, and optimizes business performance. By design Mobility Edge is built to enable seamless evolution, allowing supply chain operations to realize even greater efficiency, simplicity and opportunities to innovate and grow with confidence. When your operation is invested in mobility solutions, you need a durable, stable and secure platform to maximize and protect that investment. As an innovative leader in supply chain, you need to stay on top of emerging technology. Stay ahead of the curve. Ahead of the competition. Today and in years to come.



OPERATIONAL INTELLIGENCE

Honeywell Operational Intelligence provides actionable insights into critical areas such as mobility devices, printer usage, and network connectivity. These insights can be turned into automated workflows that optimize warehouse processes for greater productivity.



SCANPAL™

Our ScanPal Mobile platform is the perfect entry level secure platform for retailers looking to keep upfront costs low, but ensure they have a strong reliable platform. The ScanPal series promotes the avoidance of using low cost consumer grade devices and gives retailers the ability to have a supported, rugged device without the issues leveraging consumer devices in a retail environment. The latest ScanPal™ platform is built on Qualcomm Snapdragon octa-core 2.0GHz processor and robust wireless connectivity through NFC, Wi-Fi 5, Bluetooth 5.1 and 4G LTE communication. This platform is built on Android 11 and can be upgraded to Android 13* minimizing maintenance issues and ensuring long-term feature support.



HONEYWELL SMART PAY

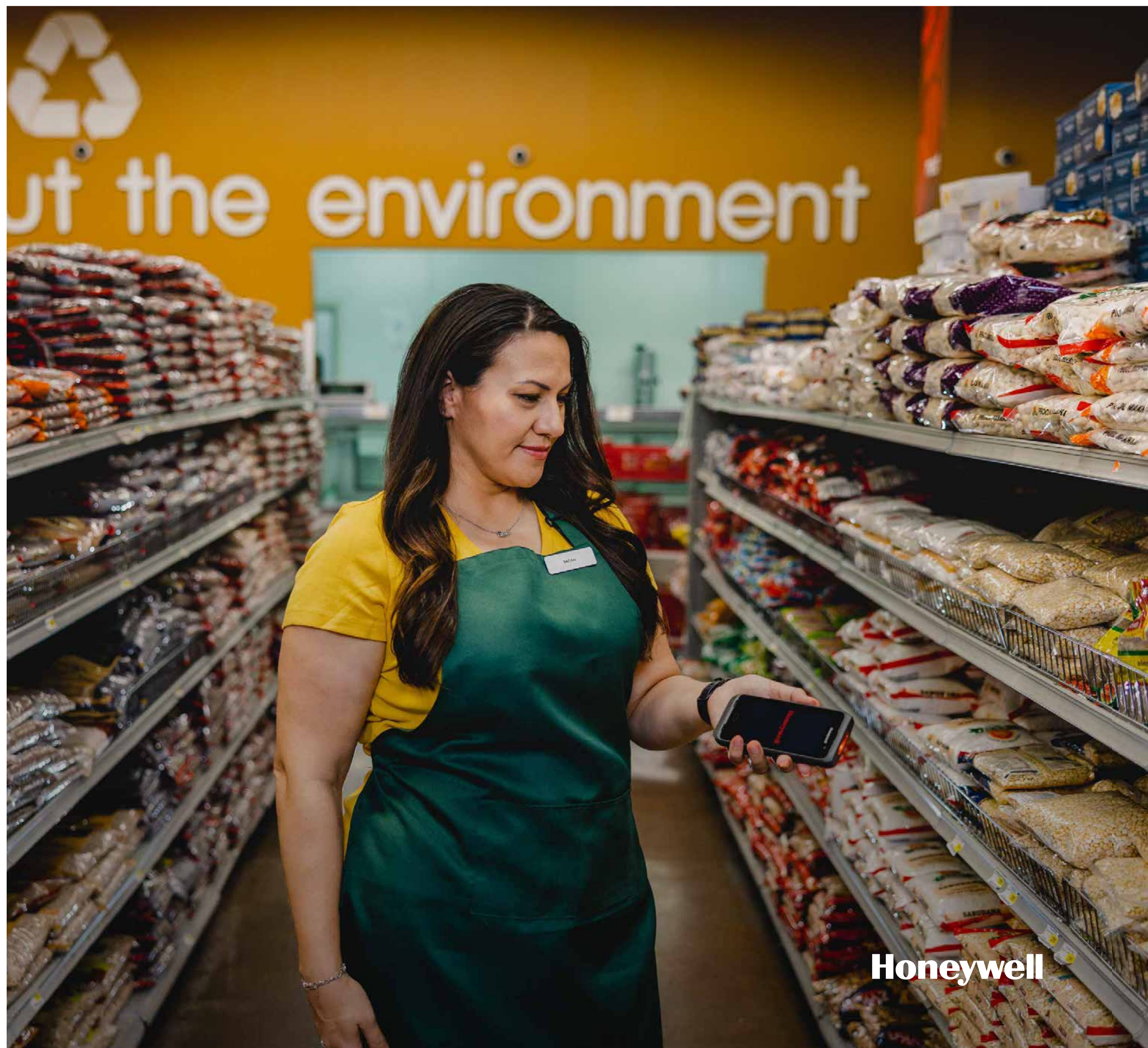
Smart Pay enables Honeywell mobile computers to become secure and contactless mobile points-of-sale, allowing customers to submit a payment anywhere and turning shoppers into buyers. Smart Pay is designed to integrate with the merchant's existing POS software and payment processing systems, preserving existing relationships with merchant banks and processor/acquirers and POS solution vendors. Smart Pay reduces TCO by eliminating the need for additional hardware to power your mPos device.



COLLABORATING WITH HONEYWELL

Honeywell has been serving the retail industry for 75 years, and we are dedicated to continuing our support of operational innovation. When you team with Honeywell, you benefit from the depth of industry knowledge and expertise that our teams have crafted and refined. Our solutions are designed to help you stay on the forefront of operational and retail technology. Our team-oriented support and service is aimed at helping you address your most critical needs. Honeywell has engineered a broad portfolio of software, platforms, and devices designed to improve critical workflows within retail stores and distribution centers. Our solutions are tested across thousands of customer deployments worldwide to help increase staff productivity, efficiency, and accuracy.

If you are ready to transform and optimize your retail enterprise, [contact](#) a Honeywell Retail Expert today!



For more information

sps.honeywell.com

Honeywell Safety and Productivity Solutions

855 S Mint St
Charlotte, NC 28202
800-582-4263
www.honeywell.com

Retail Solutions Best Sellers eBook | Rev A | 05/23
©2023 Honeywell International Inc.

Honeywell