



# RS2100 Wearable Scanner

**The world's smallest  
enterprise wearable scanner**

March 2024



# Agenda

- Why Zebra?
- Challenge and Solution
- Unique Benefits
- Product Tour
- Zebra Services



**Why Zebra**

# Why Zebra

## Extensive Reach

Scalable to meet any enterprise demands



**\$5.6B**

Global Sales



**128+** offices  
in 55 countries



**5,300+** US and INTL  
patents issued and pending



**9,800+**  
employees worldwide



**10,000+** channel  
partners in over 180 countries



**\$567M+** R&D  
~10% of Sales

## Leader Status

Gartner Magic Quadrant for Indoor Location Services — Worldwide

**#1**

**Rugged  
Mobile Computing**

**Data Capture**

**Barcode Printing**

**Mobile RFID**

## Our People Make the Difference



## Channel Accolades







# Challenge and Solution

# When the job calls for affordable, ergonomic and effortless wearable scanning, the RS2100 delivers

- The world's smallest enterprise wearable scanner
- Lightweight — weighs about as much as a large strawberry
- Easiest wearable experience
- Budget friendly







# What sets the RS2100 apart from the rest?

**New levels of comfort** – ultra-light and world's smallest enterprise wearable scanner

**Superior gripping** – innovative design leaves a worker's entire palm free for better dexterity and gripping

**Ready to use out of the box**, virtually no instructions are required

**Device Tracker** makes lost wearable scanners a thing of the past\*

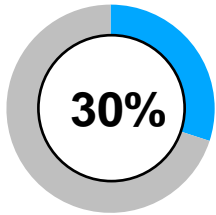
**One size fits all** – no need to buy and manage multiple glove/mount sizes

**Budget friendly** with Zebra quality and performance

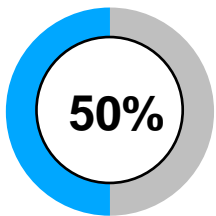
\*Optional Device Tracker license required

# Maximize worker comfort and productivity

Free your workers' hands for an instant productivity boost — process more orders, increase order accuracy and meet the fastest delivery times

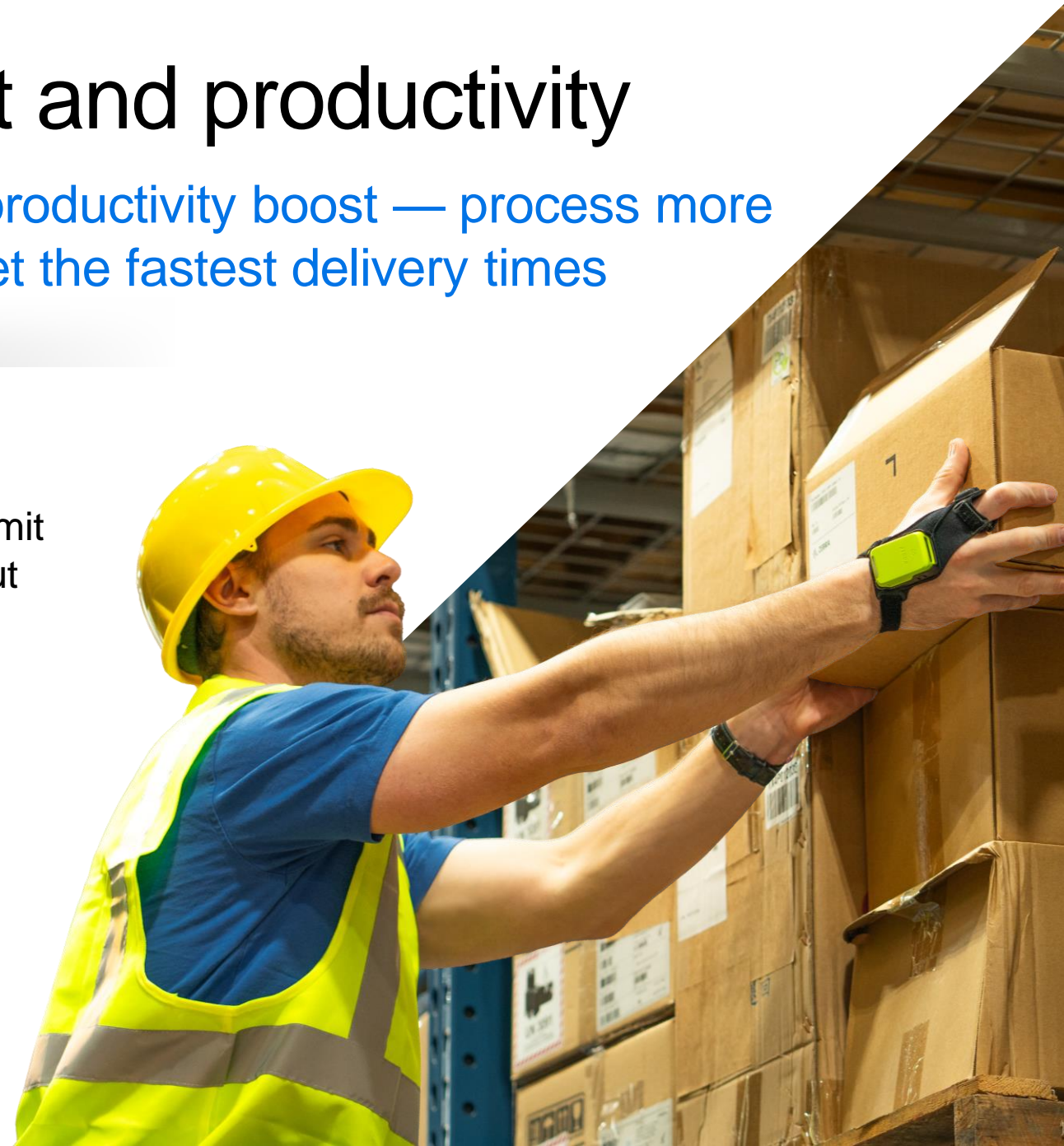


Up to **30% increase in worker productivity** with wearable solutions; limit the time workers need to pick up and put down a handheld scanner



Up to **50% less muscle effort** for maximum user comfort...decrease improper lifting that occurs when workers need to juggle a handheld scanner and items

Source for statistics: Zebra internal productivity studies for picking workflows. Comparisons based on using a wearable solution with omnidirectional scanning versus legacy handheld scanner.





# Where can you put the RS2100 to work?



## Warehousing

- Picking
- Sorting
- Receiving/put-away
- Replenishment
- Packing
- Reverse logistics

## Retail

- In-store inventory
- In-store picking
- Price management
- Store order pick-up and delivery
- Online order fulfillment

## Hospitality

- Ticket scanning
- Reservation scanning

## Manufacturing

- Inventory put-away
- Line-side replenishment
- Work in Process (WIP)
- Quality control
- Safety testing
- Asset management

## Transportation and Logistics

- Sorting
- Loading/unloading
- Reverse logistics



**Unique Benefits**



# Superior back of hand ergonomics



## **Lowest profile on the market**

Just 0.58 in./14.7 mm high  
for easy picking in the  
tightest locations



## **Palm free**

More secure grip on  
packages/items and  
better dexterity



## **Full-shift comfort**

Ultra light weight at just 1.1  
oz./31 g — virtually eliminates  
weight-based fatigue



# Wearable workflows made simple



1

## Easy to order

- One-size-fits-all – just order left- and right-hand versions
- No need to purchase and stock multiple sizes

2

## Easy to deploy

- Workers will intuitively know how to put it on – with little to no instructions
- Embedded battery with **18+ hours of run time** — covering multiple shifts without charging; **17,000 scans per charge**

3

## Easy to pair\*

- Pair with a host device in seconds with NFC tap-to-pair or scan a pairing barcode\*
- Works with any Zebra mobile device, consumer smartphones and Windows PCs

# An effortless experience, right out of the box

Deployment is quick and simple, with little to no worker training — so your wearable solution is operational in no time



**Simply pop the RS2100 scanner into the back of hand mount**



**Mount is available in left- and right-hand versions**



*Adjustable strap ensures a comfortable fit for everyone*

# No more lost wearable scanners with Device Tracker

Finding a tiny wearable scanner in a warehouse can be like looking for a **needle in a haystack** — until now

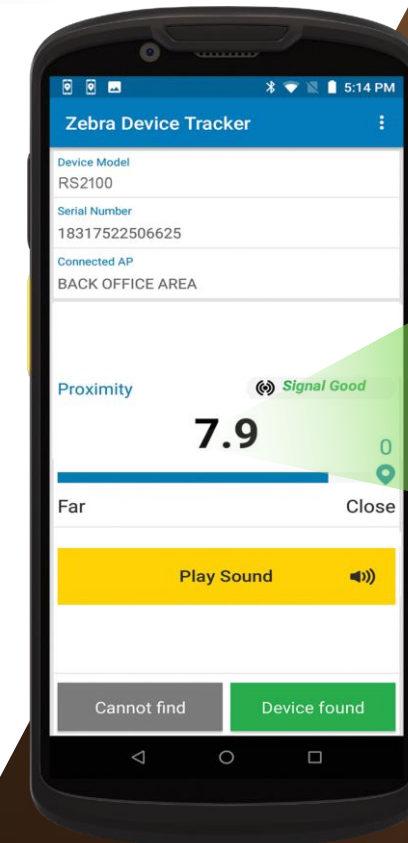
**Industry first** BLE Beaconsing firmware

**Pinpoint the location of a misplaced scanner in minutes**, whether it was left behind on a warehouse shelf or in the break room

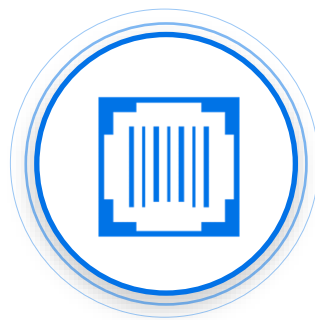
**Create a Virtual Tether** to help prevent misplaced devices — the RS2100 and its host mobile computer can beep, vibrate and flash when the Bluetooth connection is lost

**BLE Beaconsing is included** with all RS2100 scanners

\* Bluetooth Device Tracker Peripheral license is required







# Fast and flawless barcode capture

## Easy intuitive aiming

Cross-hair aimer makes accurate aiming easy for fast barcode capture

## Damaged barcodes? No problem

With Zebra's PRZM Intelligent Imaging technology, workers can capture barcodes in virtually any condition — scratched, dirty, poorly printed, damaged, under shrinkwrap and low contrast

## Point-and-shoot simplicity

Wide field of view makes it easier to capture barcodes of any size; less precision needed when aiming for faster, effortless scanning — even for new workers

\* Distance dependent on symbology type and size.

# Cost-effective solution for packing stations

Connect up to seven RS2100 scanners to one PC with Zebra's Bluetooth Adapter



## Connect to a fixed workstation

Bluetooth Adapter provides an instant connection to a PC via USB for data access

## Improve packing accuracy and productivity

Workers can scan a barcode on the tote, box or shipping label and view everything they need on the workstation's large display

## Reduce cost per station

No need to purchase individual mobile computers for each worker

## Flexible mounting options

Horizontal on a tabletop (rubber feet provide traction); vertical on a wall or pole with screws or cable ties



*Simply scan the barcode printed on the Bluetooth Adapter to instantly connect to a desktop computer*

# Durable for all day, everyday use

Drop it on the floor, use it in the dusty warehouse or receiving dock – the RS2100 provides the right level of ruggedness for your environments

## Drop tested to handle everyday drops

Designed to handle multiple 6 ft./1.8 m drops to concrete  
Tested across entire operating temperature range

## IP54 sealing

Protected against dust and splashing water

## Withstands frequent impacts

Survives 1,000 1.6 ft./0.5 m tumbles — the equivalent of 2,000 hits





# Value-add Zebra software tools simplify your entire scanning journey



## Simple configuration

Zebra 123Scan's configuration wizard simplifies every step of scanner deployment, from configuration to data formatting and firmware updates — easy for first time users to get scanners up and running quickly

## Easy integration with your applications

123Scan makes it easy to format barcode data for your applications so you can integrate hands-free scanning into your existing workflows

## Split-second device pairing

Pair with NFC-enabled devices with a quick tap; use Zebra's Scan-to-Connect utility to instantly connect to a Bluetooth enabled PC, tablet or smartphone

## No interference with your Wi-Fi

Zebra's Wi-Fi Friendly Mode ensures your cordless RS2100 scanners only operate on channels that are not shared with your Wi-Fi network



**Product Tour**

# RS2100 Overview

Back view



Charging  
Contacts

Front view



SE4770  
scanner

Highly visible bright green color makes it harder to lose

Integrated NFC for one-tap pairing

Line of sight LED for easy scan confirmation



Trigger  
Button

Adjustable strap  
provides a  
comfortable fit for  
every hand size



# Accessories



## Two-bay charging dock

Flexible mounting: desk or wall  
Charges via any standard USB-C adapter and cord



## Back of hand mount

Right- and  
left-hand versions



## Bluetooth-USB adapter

Connect up to 7 RS2100  
scanners to a fixed PC

# Packaging that practically eliminates the need for training

Makes putting on the scanner as easy as 1, 2, 3



Instructions are printed...everywhere.



**Zebra Services**



# Zebra OneCare™ Maintenance Plans

*Choose the Plan that Meets Your Business Urgency*



You count on your scanners every minute of every day. Ensure predictable performance, support for critical operations and improved business outcomes while eliminating unbudgeted repair expenses.

Feature	Zebra OneCare Essential Core assurance	Zebra OneCare Select Maximum protection
Live-agent support	Mon–Fri, 8–5 local time	24/7
Repair turnaround time	3-day repair turnarounds	‘Like-new’ replacement device ships for next business day delivery
Accidental damage covered	✓	✓
Cloud-based visibility into repair, case reports and more with VisibilityIQ OneCare	✓	✓
Spares pool management		✓
Commissioning Service	Option to include Standard or Advanced Commissioning	Standard Commissioning included, option to add Advanced Commissioning

## BENEFITS

- Enhanced support beyond standard warranty coverage
- Genuine Zebra expertise and parts maximize device uptime – ensure your device is back to Zebra’s manufacturing specifications
- Outstanding value – eliminates unexpected repair costs with a planned maintenance plan
- Let Zebra handle support, while you focus on your strategic initiatives



# Thank you!

ZEBRA and the stylized Zebra head are trademarks of Zebra Technologies Corp., registered in many jurisdictions worldwide. Android is a trademark of Google LLC. The Bluetooth® word mark and logos are registered trademarks owned by Bluetooth SIG, Inc. and any use of such marks by Zebra is under license. Wi-Fi™ is a trademark of Wi-Fi Alliance®. All other trademarks are the property of their respective owners. ©2024 Zebra Technologies Corp. and/or its affiliates. 03/07/2024

